

FRONT COLLECTOR EQUIPMENT



VMS.2 VERSION (WITHOUT PEELER)



DAY BY DAY WE IMPROVE THE WORLD OF COLLECTING
DRIED FRUIT AND OLIVE COLLECTORS

Agromelca
www.agromelca.com



VMS.2 MODEL

SUSPENDED FRONT-MOUNTED HARVESTING
EQUIPMENT FOR OLIVES AND DRIED FRUITS



The **VMS** series is specially designed to overcome the limitations of front collectors. This new series offers you a different innovative, high-performance product with big advantages and significant advantages for collecting olives and dried fruits.

This machine is mounted at the front of the tractor.

This device gives us considerable advantages such as its lightweight, high performance, quick-release from the vehicle, its agile handling, fast unloading or excellent visibility to make the attachments to the tree.

HEAD WITH THREE POINT

- The three-point clamping head is very lightweight.
- Attachment corrected at three points (does not damage branches, trunk or the fruit).
- Continuous circular vibration with the possibility of 30-40% power variation with a very easy operation (5 min.) depending on the type of tree to harvest (almond or olives trees).
- The clamping arms with double anchoring that allow us to attach them to trunks with diameters ranging from 8 to 40 cm (depending on the type of tree to be harvested).
- The outcome of the sum of the vibration type incorporated and the attachment system corrected at three points is that the yield percentages are excellent with no damage.

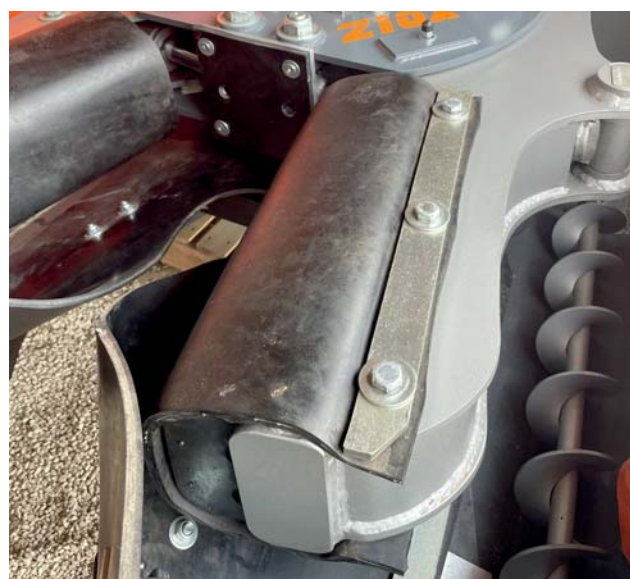
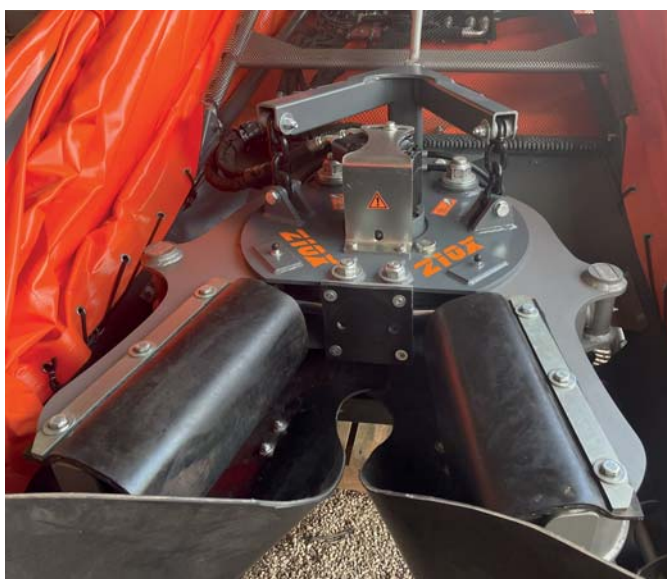
Optionally, we can mount the generic arms, which will allow us to perfectly vibrate trunks ranging from 15 to 50 cm.

The vibration we will get and the knockdown percentages will also be excellent.



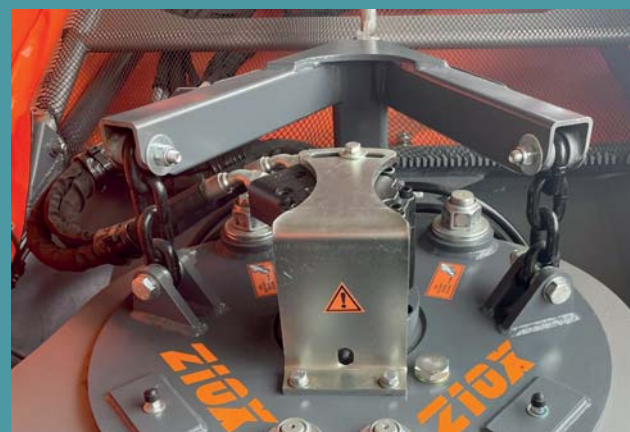
Z10X HEAD (OPTIONAL)

- Very light weight.
- Continuous circular vibration with the possibility of 30-40% power variation with a very easy operation (5 min.) depending on the type of tree to harvest (almond trees).
- Fits on trunks with a diameter of between 8 to 35 cm.
- Excellent takedown percentage without damaging the tree.
- This head is not recommended for harvesting olives or other types of fruit whose trunk diameter is greater than 30 cm.



HEAD FIXING

- Head fixed to free rotation support.



CONTROLS AND MOVEMENTS COMMANDS

The movements and vibration control are managed very comfortably and simply through an electronic cobra control.



MOVEMENTS

VMS

- Opening and closing tarpaulins on the platform.
- Opening and closing vibration head arms.
- Left vibration + right vibration.

Simultaneous movements:

Extend the umbrella canopies + close the clamp.

Open the clamp + retract the umbrella canopies.

Simultaneous movements (only with optional display screen).

DISPLAY (OPTIONAL)

The new display screen features:

Operation display.

Automatic movement sequencer.

Tree counter.

Hour counter.

Sensors (PTO RPM + oil temperature).



CONTROL UNIT FUNCTIONS



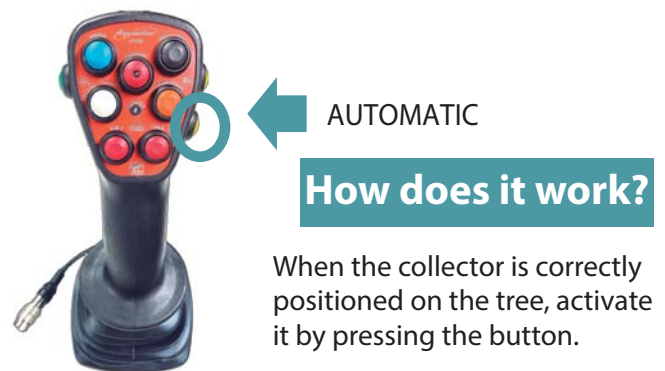
1 SIMULTANEOUS



Pressing the button activate the simultaneous. Pushing the joystick (without pressing any button) the umbrella will extend and the clamp will close automatically.

Move the joystick in the opposite direction to open the clamp and withdraw the umbrella. To deactivate this function press the button again.

2 SEQUENTIAL AUTOMATIC MOVEMENTS (Optional)



The collector performs the following actions automatically:

1. Extend canvas platform.
2. Open pincer arms.
3. Left vibration (if the operator has activated it).
4. Right vibration (if the operator has activated it).
5. Open pincer arms.
6. Retract canvas platform.

TUBULAR COLLECTING PLATFORMS

Our **VMS** vibration devices are equipped with the new tubular iron platform.

Tubular iron collection platform with an 80 cm mouth.

Standard diameter: 6–6.5 m.

Standard bar angle.

Canvas kit (optional equipment).

Fruit storage capacity varies depending on the type of fruit.

Unloading via a hydraulic gate.



INCORPORATED HINGE FOR NARROW PLANTATION SPACES (OPTIONAL)

We can incorporate the hinge system to harvest with the umbrella plantations with a not much space.

This joint allows us to rotate the entire collector 45° in one direction, and therefore we can make entering and leaving the tree operations without significant complications.

The minimum space for the hinge to work successfully is 6x3.

If we have to harvest trees with the hinge working, the umbrella diameter is recommended not to exceed 5 m.



HYDRAULIC SYSTEM CONFIGURATION

We have always been committed to the reliability of our products, and therefore all the hydraulic components we install in our collectors are from renowned and top quality brands.

VMS.2

The **VMS.1** series model features the following hydraulic configuration:

1. Incorporates 1 left vibration + 1 right vibration.
2. Vibration brake.
3. Adjustment of the clamping force of the arms against the trunk.
4. Hydraulic block + solenoid valve block for movements (individual flow control for each movement).
5. Increase or decrease of vibration power depending on the type of tree being harvested.
6. Electronic Cobra control + power unit.



7. Simultaneous movements:
Open out umbrella canvas + close pincer
Pincer opening + collect umbrella canvas
8. Short three-point closing head with young trees arms.
9. Fruit storage capacity depends on the type of fruit (approx. 600-800 Kg.).
10. Unloading by a hydraulic gate.
11. Hydraulic tank with a capacity of 200 litres of oil.
12. Double vane pump and gear pump.



VMS.2 ECO VARIANT (WITHOUT PEELERS)

Tubular iron harvesting platform with an 80 cm opening.

Standard diameter: 6-6.5 m.

Standard bar angle.

Canvas extension (optional equipment).

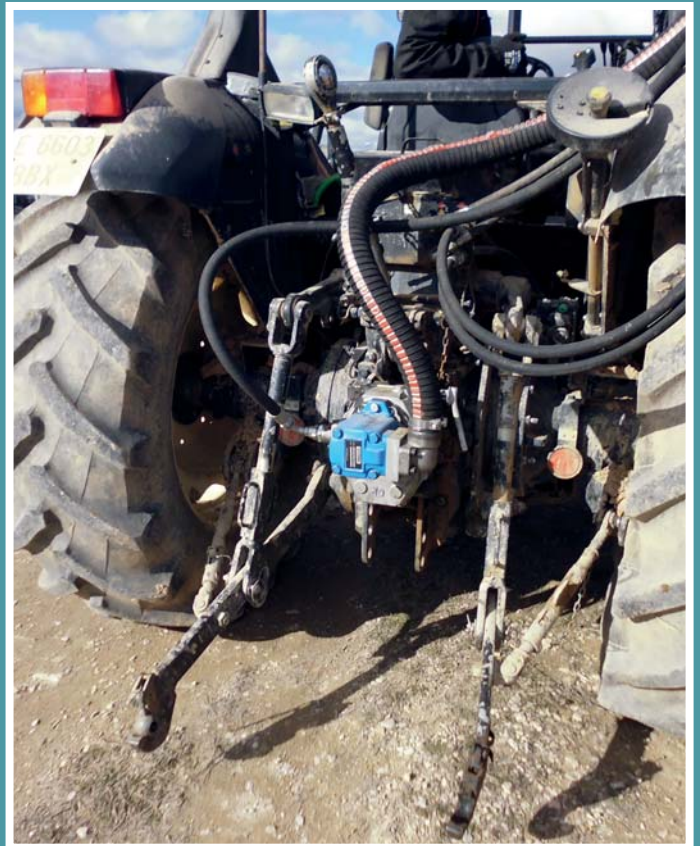
Fruit storage capacity depends on the type of fruit.

Unloading via hydraulic gate.

El modelo de la serie **VMS.2 ECO** incorpora la siguiente configuración hidráulica:

1. Hydraulic tank with a capacity of 90 liters of oil integrated into the chassis.
2. Vane pump and female multiplier installed directly on the tractor's PTO.
3. Selector valve block for movements.
4. Cobra control installed on the tractor distributor lever (movements through the tractor's hydraulic pump).





VMS.2

FEATURES	VMS.2	VMS.2 ECO
Mixed. Olive - Dried fruits	•	•
Iron tubular platform with 80 cm mouth	•	•
Bar diameter	6,5 m	6,5 m
Electronic cobra control + CPU	•	Attached to the tractor's distributor
Display (Operation display + Automatic movement sequencer + Tree counter + Hour meter + Sensors (PTO RPM + Oil temperature))	optional	NO
Simultaneous movements	•	NO
Vibration	1 vibration in each direction	1 vibration in each direction
Continuous circular vibration	•	•
Adjustment arm tightening and vibration brake	•	•
Supplement to counterbalance increased power	optional	optional
Oil radiator	•	•
Oil tank capacity (litres)	200 l	Integrated into the 90 l chassis
Hydraulic system	Double pump (vane + multiplier)	A pump (vane + female multiplier installed on tractor PTO)
Tractor power take-off engine revolutions	540 RPM normal	540 RPM normal
Umbrella opening and closing sound alarm	•	•
Hydraulic block movements	Solenoid valves	Selector valves
Free rotation support	•	•
Young tree arm head (3 point head)	•	•
Generic arm head (3 point head)	optional	optional
Parallel head Z10X	optional	NO
Canvas supplemen (0,50m/1m)	optional	optional
Trunk capacity (depending on the fruit)	600-800 kg ⁽¹⁾	600-800 kg ⁽¹⁾
45° hinge narrow plantation spaces (diameter 5m) ⁽²⁾	optional	optional
Opening low bars (the first two)	optional	optional
Platform internal auger kit	optional	NO
TRV Turbo Vibration (3 point head)	optional	NO

Agromelca, S.L. reserves the right to make the modifications it considers necessary to the products in this catalogue without prior notice.
 (•) Standard. ⁽¹⁾ Rough guide (depends on the type and characteristics of the fruit). ⁽²⁾ With hinge the bar diameter will be 5 metres.



DAY BY DAY WE IMPROVE THE WORLD OF COLLECTING

Pol. Industrial "Las Lagunas", P-A 2 • 44610 Calaceite - Teruel (España)

Tel. 978 851 283

info@agromelca.com

Agromelca
www.agromelca.com