

Agromelca



VM1 SPARE PARTS MANUAL

2018

XT10 PNA/PGA/DGA
PROGRESSIVE TOW-LINE,
TRV and ELLIPTICAL

**DAY BY DAY
WE IMPROVE
THE WORLD OF
COLLECTING**

DRIED FRUIT AND
OLIVE COLLECTORS

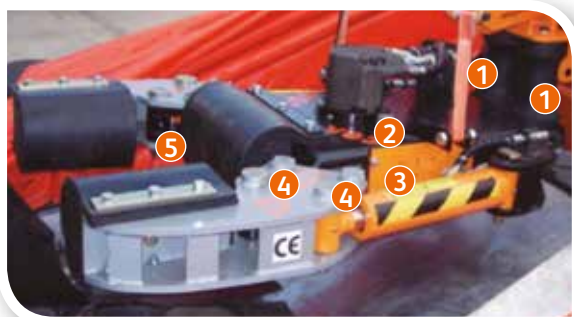
www.agromelca.com



1. Vibration equipment

1.1. Vibration head

1.1.1. MAIN BODY



COMPLETE VIBRATION HEAD Ref. V110000

- ❶ SILENT BLOCKS (X2) Ref. V111002
- ❷ CENTRAL BOX Ref. V111001
- ❸ SIDE COVER Ref. V111006
- ❹ BOLTS (X4) Ref. V113103
NUT (X4) Ref. V113104
- ❺ BOLTS ARMS CAPS (X2)
Ref. V113105

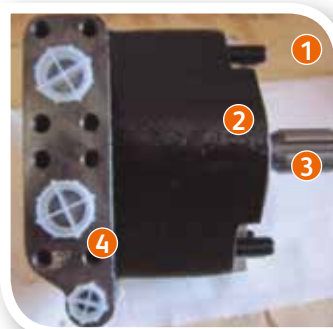


- ❻ CAPS (x4) Ref. V111005
- ❼ CHAINS (x2) Ref. V111003 (Indicate links)
- ❽ CHAIN PROTECTOR (x2) Ref. V111007

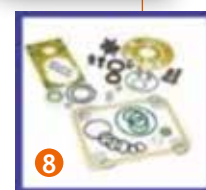
1.1.2. MOTOR-LIDS-COUNTERWEIGHT ASSEMBLY



- ❶ MOTOR Ref. V112020
- ❷ UPPER LID Ref. V112001



- ❶ MOTOR Ref. V112020
- ❷ OUTER HOUSING Ref. V112021
- ❸ SHAFT Ref. V112022
- ❹ MOTOR COVER Ref. V112027
- ❺ CARTRIDGE Ref. V112023
- ❻ REAR BEARING Ref. V112025
- ❼ FRONT BEARING Ref. V112024
- ❽ SEAL KIT Ref. V112026



REMARK: it is necessary to indicate BRAND, MODEL, DISPLACEMENT or MACHINE No. when ordering HYDRAULIC MOTOR SPARE PARTS.

**THICKNESS ASSEMBLY 30MM (A):**

- ① UPPER LID Ref. V112001
- ② CIRCLIP (x2) Ref. V112007
- ③ LOWER LID Ref. V112002
- ④ UPPER LID CAP Ref. V112003
- ⑤ LOWER LID CAP Ref. V112004
- ⑥ ROLLER BEARINGS (x2) Ref. V112005
- ⑦ SEAL (x2) Ref. V112006



- ① COUNTERWEIGHT SHAFT Ref. V112008
- ② COUNTERWEIGHT Ref. V112010

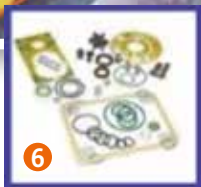
**COUNTERWEIGHT SUPPLEMENTS:**

- ③ UPPER SUPPLEMENT 20 mm Ref. V112011
- UPPER SUPPLEMENT 10 mm Ref. V112014

**COUNTERWEIGHT SUPPLEMENTS:**

- ⑤ INTERMEDIATE SUPPLEMENT Ref. V112013

1.1.3. HYDRAULIC CYLINDERS AND HOSES



- ❶ HOSE 1 TRACT 1 MOTOR Ref. V113311
- ❷ HOSE 2 TRACT 1 MOTOR Ref. V113321
- ❸ MOTOR DRAIN HOSE TRACT 1 Ref. V113301
- ❹ TIGHTEN CLAMP CYLIND. (x2) Ref. V113100
- ❹ TIGHTEN CLAMP CYLIND. Ø70 (x2) Ref. V113200
- ❺ BOLT (x2) Ref. V113103
NUT (x2) Ref. V113104
- ❻ SEAL KIT CYL. Ø95 (x2) Ref. V113102
- ❻ SEAL KIT CYL. Ø70 (x2) Ref. V113202



TIGHTEN CLAMP CYLIND. Ø95 (x2) Ref. V113100

- ❶ HOSE 1 TRACT 1 CYLINDER Ø95 (x2) Ref. V113111
- ❷ HOSE 2 TRACT 1 CYLINDER Ø95 (x2) Ref. V113121

TIGHTEN CLAMP CYLIND. Ø70 (x2) Ref. V113200

- ❶ HOSE 1 TRACT 1 CYLINDER Ø70 (x2) Ref. V113211
- ❷ HOSE 2 TRACT 1 CYLINDER Ø70 (x2) Ref. V113221



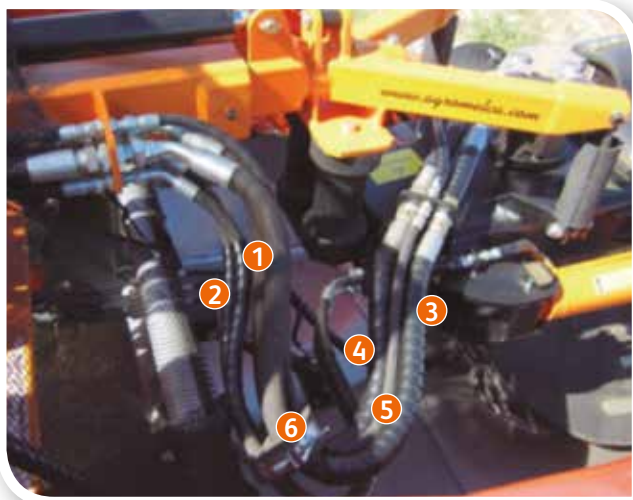
TIGHTEN CLAMP CYLIND. Ø95 (x2) Ref. V113100

- ❸ HOSE 1 TRACT 1 CYLINDER Ø95 (x2) Ref. V113111
- ❹ HOSE 2 TRACT 1 CYLINDER Ø95 (x2) Ref. V113121

TIGHTEN CLAMP CYLIND. Ø70 (x2) Ref. V113200

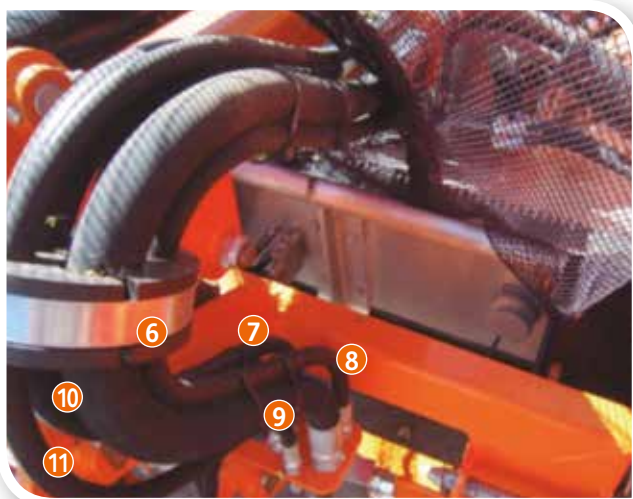
- ❸ HOSE 1 TRACT 1 CYLINDER Ø70 (x2) Ref. V113211
- ❹ HOSE 2 TRACT 1 CYLINDER Ø70 (x2) Ref. V113221

NOTE: it is necessary to indicate VIBRATION HEAD MODEL or MACHINE No. when ordering spare MOTOR HOSES.



TIGHTEN CLAMP CYLIND. Ø95 (x2) Ref. V113100
TIGHTEN CLAMP CYLIND. Ø70 (x2) Ref. V113200

- ① HOSE 1 TRACT 2 Ref. V113118
- ② HOSE 2 TRACT 2 Ref. V113128
- ③ HOSE 1 TRACT 2 MOTOR Ref. V113312
- ④ HOSE 2 TRACT 2 MOTOR Ref. V113322
- ⑤ MOTOR DRAIN HOSE TRACT 2 Ref. V113302
- ⑥ HOSE FLANGE (x2) Ref. V113001



⑥ HOSE FLANGE (x2) Ref. V113001

TIGHTEN CLAMP CYLIND. Ø95 (x2) Ref. V113100
TIGHTEN CLAMP CYLIND. Ø70 (x2) Ref. V113200

- ⑦ HOSE 1 TRACT 3 Ref. V113113
- ⑧ HOSE 2 TRACT 3 Ref. V113123
- ⑨ HOSE 1 TRACT 3 MOTOR Ref. V113313
- ⑩ HOSE 2 TRACT 3 MOTOR Ref. V113323
- ⑪ MOTOR DRAIN HOSE TRACT 3 Ref. V113303



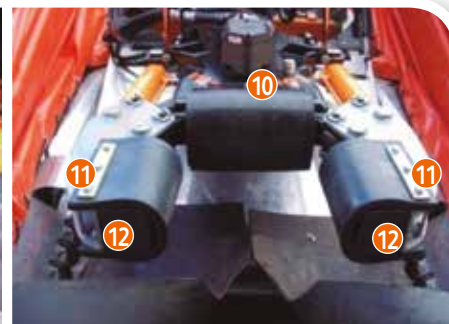
TIGHTEN CLAMP CYLIND. Ø95 (x2) Ref. V113100
TIGHTEN CLAMP CYLIND. Ø70 (x2) Ref. V113200

- ⑬ HOSE 1 TRACT 4 Ref. V113114
- ⑭ HOSE 2 TRACT 4 Ref. V113124
- ⑮ HOSE 1 TRACT 4 MOTOR Ref. V113314
- ⑯ HOSE 2 TRACT 4 MOTOR Ref. V113324
- ⑰ MOTOR DRAIN HOSE TRACT 4 Ref. V113304

NOTE: it is necessary to indicate VIBRATION HEAD MODEL or MACHINE No. when ordering spare MOTOR HOSES.

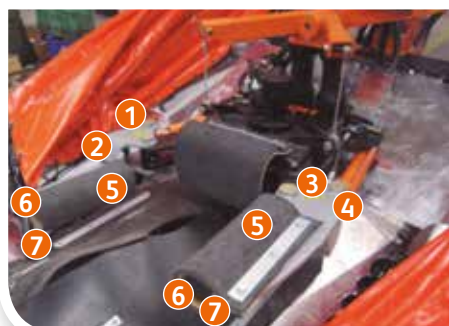
1.1.4. CLAMPING ARMS ASSEMBLY

1.1.4.1. REGULAR TREE CLAMPING ARMS ASSEMBLY Ref. 114100



- | | |
|---|--|
| 1 COMPLETE RIGHT ARM Ref. V114110 | 7 LOG STOP OUTER FLAP
Fabric Composite Ref. V114180
Medium Composite Ref. V114182
Soft Composite Ref. V114183 |
| 2 RIGHT ARM FRAME Ref. V114111 | 8 LOG STOP INNER FLAP
Medium Composite Ref. V114192 |
| 3 COMPLETE LEFT ARM Ref. V114120 | 9 LOG STOP BLOCK
Regular Composite Ref. V114171
Soft Composite Ref. V114172 |
| 4 LEFT ARM FRAME Ref. V114121 | 10 LOG STOP BLOCK FIXING PLATEN (x2) Ref. V114142 |
| 5 CLAMPING ARM OUTER FLAP (x2)
Fabric Composite Ref. V114150
Medium Composite Ref. V114152
Soft Composite Ref. V114153 | 11 ARM FLAPS FIXING PLATEN (x4) Ref. V114141 |
| 6 CLAMPING ARM INNER FLAP (x2)
Medium Composite Ref. V114162
Soft Composite Ref. V114163 | 12 CLAMPING ARM BLOCK (x2)
Regular Composite Ref. V114131
Soft Composite Ref. V114132 |

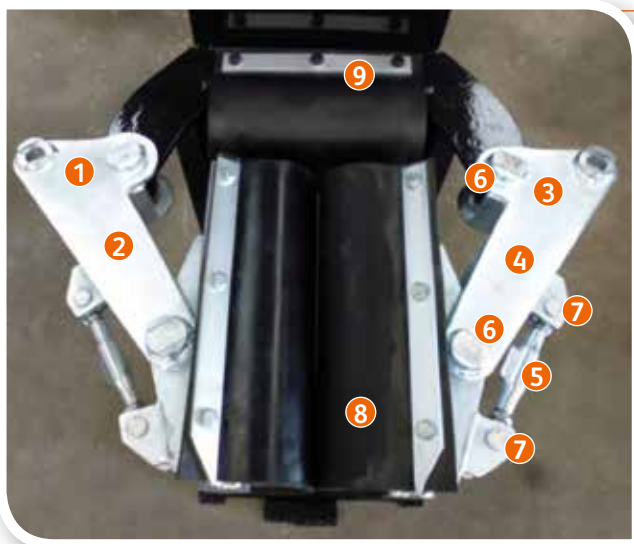
1.1.4.2. YOUNG TREE CLAMPING ARMS ASSEMBLY Ref. 114200



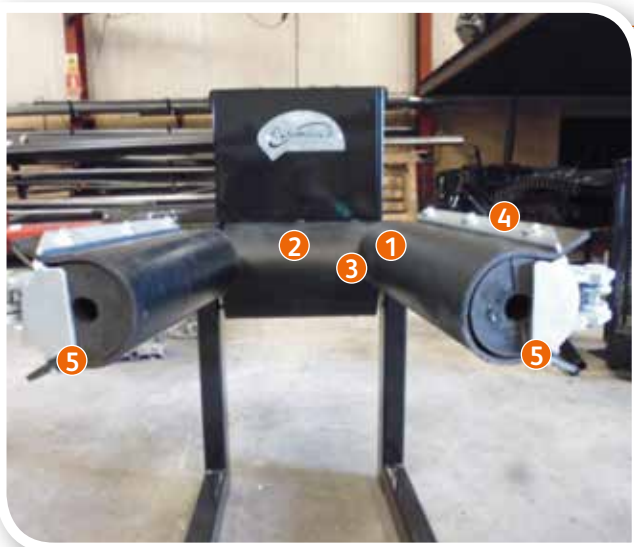
- | | |
|--|--|
| 1 COMPLETE RIGHT ARM Ref. V114210 | 8 LOG STOP OUTER FLAP
Fabric Composite Ref. V114180
Soft Composite Ref. V114183 |
| 2 RIGHT ARM FRAME Ref. V114211 | 9 LOG STOP INNER FLAP
Regular Composite Ref. V114192
Soft Composite Ref. V114193 |
| 3 COMPLETE LEFT ARM Ref. V114220 | 10 LOG STOP BLOCK
Regular Composite Ref. V114171
Soft Composite Ref. V114172 |
| 4 LEFT ARM FRAME Ref. V114221 | 11 FLAPS FIXING PLATTEN (x6) Ref. V114142 |
| 5 CLAMPING ARM OUTER FLAP (x2)
Fabric Composite Ref. V114251 | |
| 6 CLAMPING ARM INNER FLAP (x2)
Soft Composite Ref. V114263
Medium Composite Ref. V114262 | |
| 7 CLAMPING ARM BLOCK (x2)
Soft Composite Ref. V114232 | |

REMARK: it is necessary to indicate MODEL or MACHINE No. when ordering CLAMPING ARM SPARE PARTS.

1.1.4.3. SELF-ADAPTABLE ARM ASSEMBLY



- 1 COMPLETE RIGHT ARM Ref. V114230
- 2 RIGHT ARM FRAME Ref. V114231
- 3 COMPLETE LEFT ARM Ref. V114240
- 4 LEFT ARM FRAME Ref. V114241
- 5 TENSOR Ref. V114350
- 6 BOLT (x2) Ref. V121303
- 7 BOLT (x2) Ref. V121304
- 8 CLAMPING ARM OUTER/ INNER FLAP (x2)
Medium Composite Ref. V114162
Soft Composite Ref. V114163
- 9 LOG STOP BLOCK FIXING PLATEN (x2)
Ref. V114142



- 1 LOG STOP OUTER FLAP
Fabric Composite Ref. V114180
Medium Composite Ref. V114182
Soft Composite Ref. V114183
- 2 LOG STOP INNER FLAP
Medium Composite Ref. V114192
Soft Composite Ref. V114193
- 3 LOG STOP BLOCK
Regular Composite Ref. V114171
Soft Composite Ref. V114172
- 4 ARM FLAPS FIXING PLATEN (x4) Ref. V114141
- 5 CLAMPING ARM BLOCK (x2)
Soft Composite Ref. V114332



- 1 LOG STOP FLAP ANCIENT TRUNK
Regular Composite Ref. VM05
- 2 LOG STOP BLOCK ANCIENT TRUNK
Regular Composite Ref. VM07

1.2. Vibration equipment main frame

1.2.1. JOINTS AND MOVEMENTS



- ① EXTENSIBLE ARM 75cm Ref. V121160
EXTENSIBLE ARM 60cm Ref. V121161
- ② TELESCOPE SUPPORT Ref. V121132
- ③ MACHINE ELEVATION CYLINDER Ref. V121300
- ④ MACHINE SUPPORT Ref. V121121
- ⑤ MAIN FRAME BASE Ref. V121114

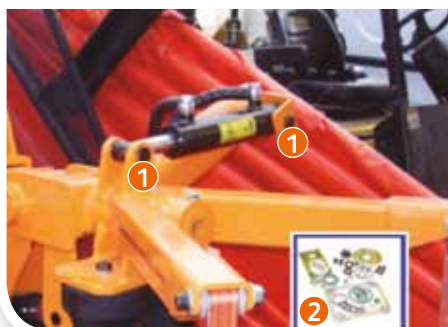


MACHINE ELEVATION CYLINDER Ref. V121300

- ⑥ BOLT (x2) Ref. V121303
NUT (x2) Ref. V113104
- ⑦ SEAL KIT Ref. V121302



- ⑧ TELESCOPE CYLINDER Ref. V121400
- ⑨ BOLT (x2) Ref. V121403
- ⑩ TELESCOPE SUPPORT BOLT Ref. V121131
NUT Ref. V113104
- ⑪ SEAL KIT Ref. V121402



CLAMP SPINNING CYLINDER Ref. V121700

- ❶ BOLT (x2) Ref. 121703
- ❷ SEAL KIT Ref. V121702

- ❸ MAIN FRAME BOLTS (x2) Ref. V121113
- ❹ MAIN FRAME BOLTS (x8) Ref. V121112
- ❺ VIBRATION EQUIPMENT SUPPORT Ref. V121151

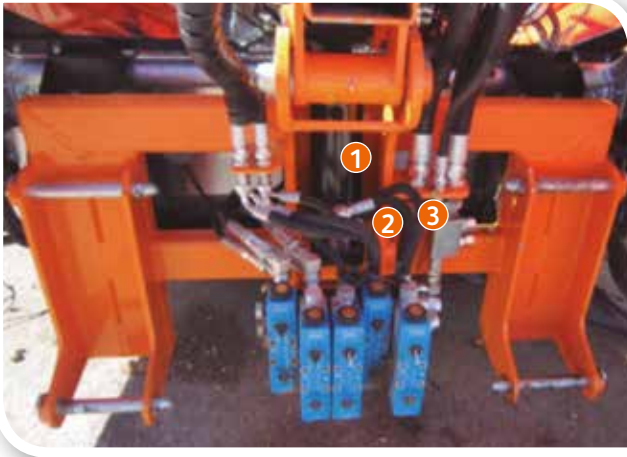
NYLON GUIDES FOR EXTENSIBLE ARM AND CLAMP SPINNING



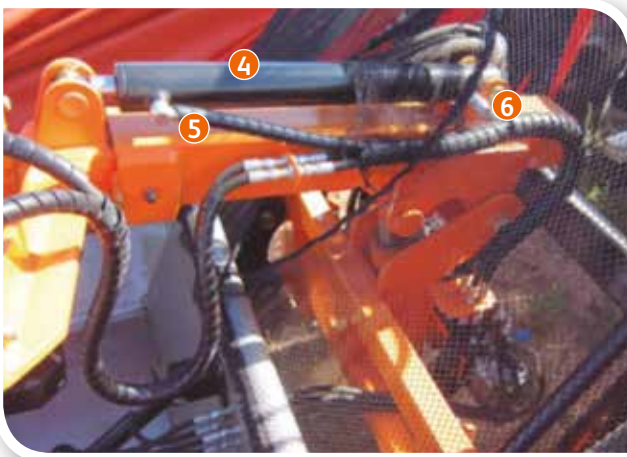
- ❶ TELESCOPE SUPPORT FRONT GUIDES (x3) Ref. V121191
- ❷ REAR GUIDE Ref. V121192

- ❸ CLAMP SPINNING CYLINDRICAL GUIDES (x2) Ref. V121175

1.2.2. VIBRATION EQUIPMENT FRAME HYDRAULIC HOSES



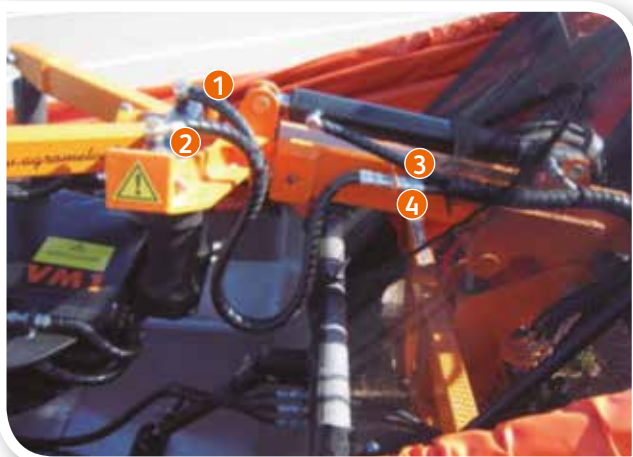
- ① MACHINE ELEVATION CYLINDER Ref. V121300
- ② HOSE 1 TRACT 1 Ref. V121312
- ③ HOSE 2 TRACT 1 Ref. V121322



- ④ TELESCOPE CYLINDER Ref. V121400
- ⑤ HOSE 1 TRACT 1 Ref. V121412
- ⑥ HOSE 2 TRACT 1 Ref. V121422



- TELESCOPE CYLINDER Ref. V121400
- ⑦ HOSE 1 TRACT 2 Ref. V121414
- ⑧ HOSE 2 TRACT 2 Ref. V121424



CLAMP SPINNING CYLINDER Ref. V121700

- 1 HOSE 1 TRACT 1 Ref. V121715
- 2 HOSE 2 TRACT 1 Ref. V121725
- 3 HOSE 1 TRACT 2 Ref. V121716
- 4 HOSE 2 TRACT 2 Ref. V121726



CLAMP SPINNING CYLINDER Ref. V121700

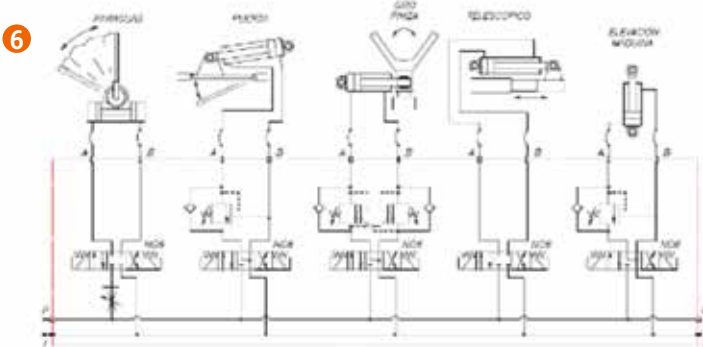
- 5 HOSE 1 TRACT 3 Ref. V121713
- 6 HOSE 2 TRACT 3 Ref. V121723

1.2.3. MAIN FRAME HYDRAULIC MANIFOLD

ELLIPTICAL VERSION



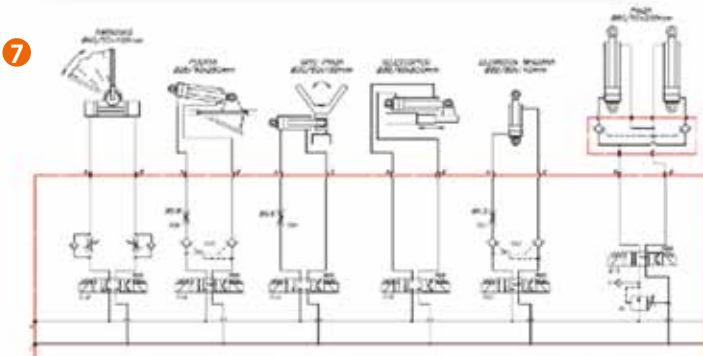
- ❶ E.V. OPEN/CLOSE UMBRELLA Ref. V123117
- ❷ E.V. OPEN/CLOSE DOOR Ref. V123116
- ❸ E.V. CLAMP SPINNING Ref. V123114
- ❹ E.V. TELESCOPE Ref. V123111
- ❺ E.V. MACHINE ELEVATION Ref. V123112
- ❻ MAIN FRAME HYDRAULIC MANIFOLD Ref. V123210



TRV VERSION

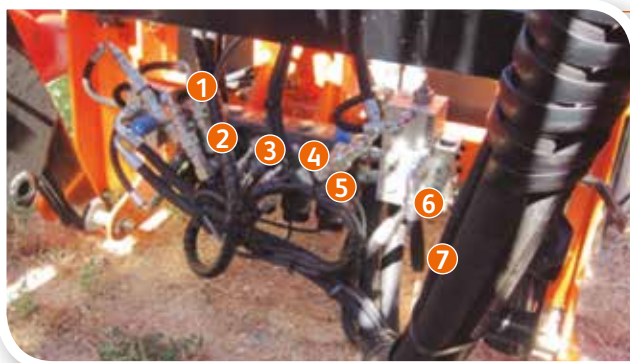


- ❶ E.V. OPEN/CLOSE UMBRELLA Ref. V123117
- ❷ E.V. OPEN/CLOSE DOOR Ref. V123116
- ❸ E.V. CLAMP SPINNING Ref. V123114
- ❹ E.V. TELESCOPE Ref. V123111
- ❺ E.V. MACHINE ELEVATION Ref. V123112
- ❻ E.V. OPEN/CLOSE CLAMP Ref. V123128
- ❼ MAIN FRAME HYDRAULIC MANIFOLD Ref. V123230

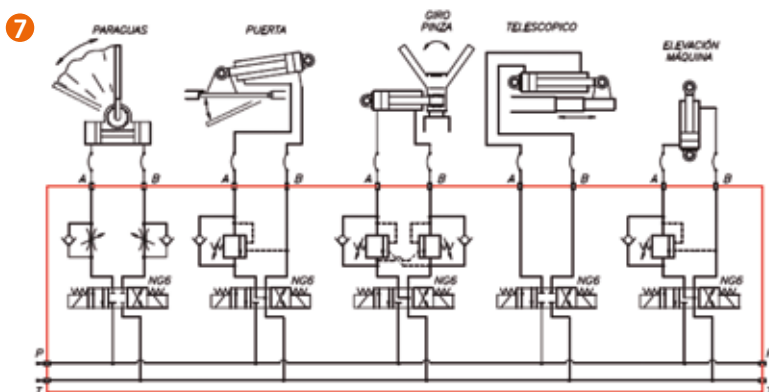


REMARK: it is necessary to indicate VERSION (PROGRESSIVE TOWLINE, TRV or ELLIPTICAL) or MACHINE No. when ordering HYDRAULIC MANIFOLD SPARE PARTS.

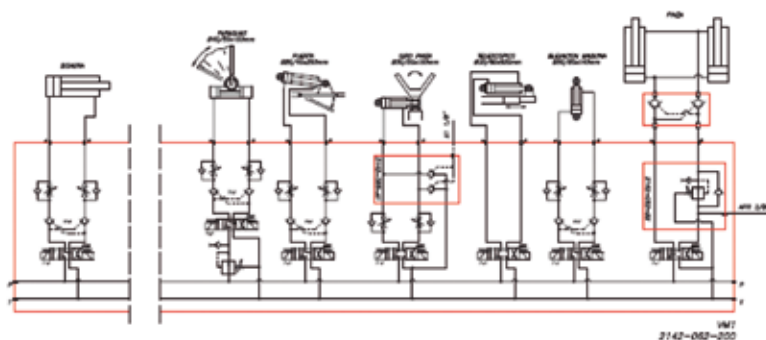
PROGRESSIVE TOWLINE VERSION



- ❶ E.V. OPEN/CLOSE UMBRELLA Ref. V123217
- ❷ E.V. OPEN/CLOSE DOOR Ref. V123216
- ❸ E.V. CLAMP SPINNING Ref. V123214
- ❹ E.V. TELESCOPE Ref. V123211
- ❺ E.V. MACHINE ELEVATION Ref. V123212
- ❻ CLAMP PRESSURE MANIFOLD Ref. V123228
- ❼ MAIN FRAME HYDRAULIC MANIFOLD Ref. V123230



TRV 2013 VERSION Ref. V123240



1.3. Hydraulic power unit / oil tank

1.3.1. PROGRESSIVE TOWLINE HYDRAULIC POWER UNIT

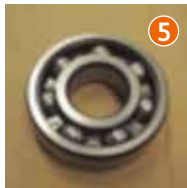


COMPLETE HYDR. POWER UNIT Ref. V130100

- 1 OIL TANK Ref. V130001
- 2 FRAME Ref. V130002
- 3 BRACES (x2) Ref. V130003
- 4 FENDER Ref. V130004

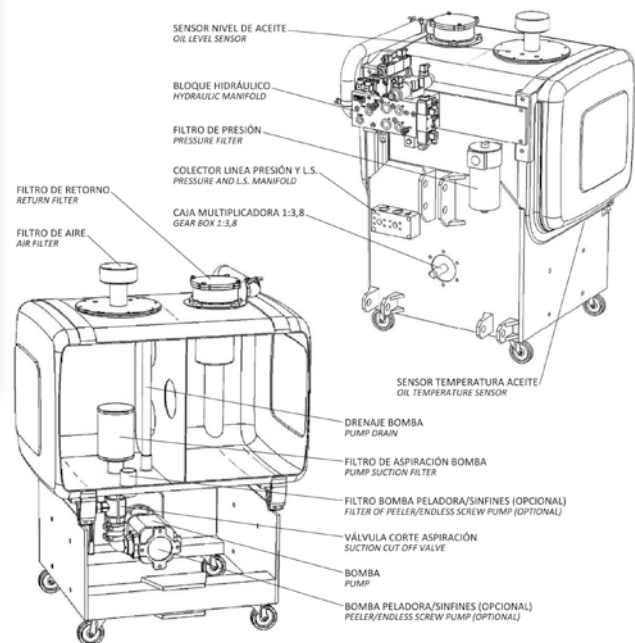


- 1 VANE PUMP Ref. V130030
- 2 OUTER HOUSING Ref. V130031
- 3 SHAFT Ref. V130032



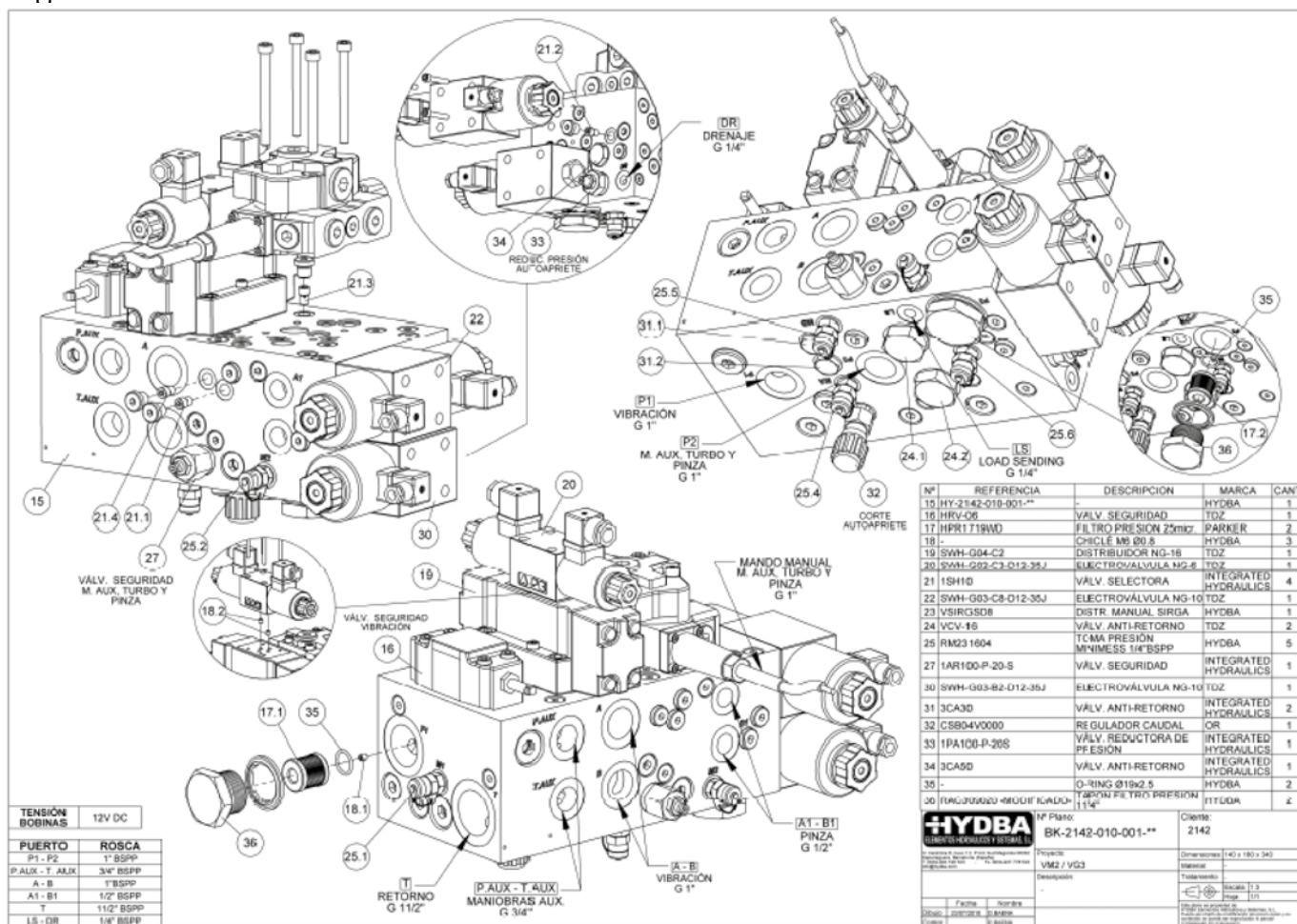
- 4 CARTRIDGE Ref. V130033
- 5 BEARING Ref. V130034
- 6 SEAL KIT Ref. V130035
- 7 VARIABLE DISPLACEMENT PUMP Ref. V130040

REMARK: it is necessary to indicate **BRAND, MODEL and DISPLACEMENT** or **MACHINE No.** when ordering **PUMP SPARE PARTS**.



- OIL LEVEL SENSOR Ref. V130010
- HYDRAULIC MANIFOLD Ref. V130020 (see next page for exploded components)
- PRESSURE FILTER Ref. V130011
- PRESSURE AND L.S. MANIFOLD Ref. V130012
- GEAR BOX Ref. V130013
- RETURN FILTER Ref. V130014
- FILTER CARTRIDGE RETURN Ref. V130009
- AIR FILTER Ref. V130015
- PUMP DRAIN Ref. V130016
- PUMP ASPIRATION FILTER Ref. V130017
- PEELER PUMP FILTER Ref. V130018
- ASPIRATION CUT OFF VALVE Ref. V130019
- VANE PUMP Ref. V130030
- VARIABLE DISPLACEMENT PUMP Ref. V130040
- PEELER PUMP Ref. V130050 (Optional)

VM1 TOWLINE VERSION HYDRAULIC MANIFOLD COMPONENTS V130020



1.3.2. TRV (TURBO VIBRATION) HYDRAULIC POWER UNIT (VERSIONS UP TO 2012)

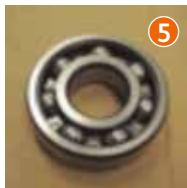


COMPLETE HYDR. POWER UNIT Ref. V130200

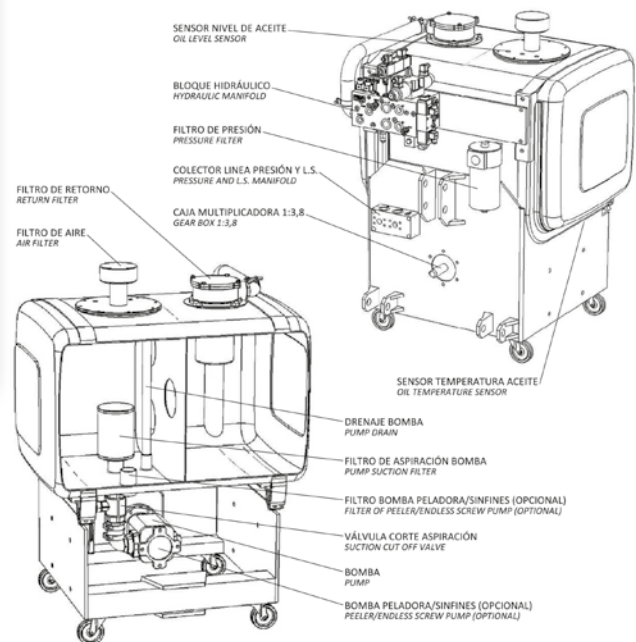
- 1 OIL TANK Ref. V130001
- 2 FRAME Ref. V130002
- 3 BRACES (x2) Ref. V130003
- 4 FENDER Ref. V130004



- 1 VANE PUMP Ref. V130030
- 2 OUTER HOUSING Ref. V130031
- 3 SHAFT Ref. V130032

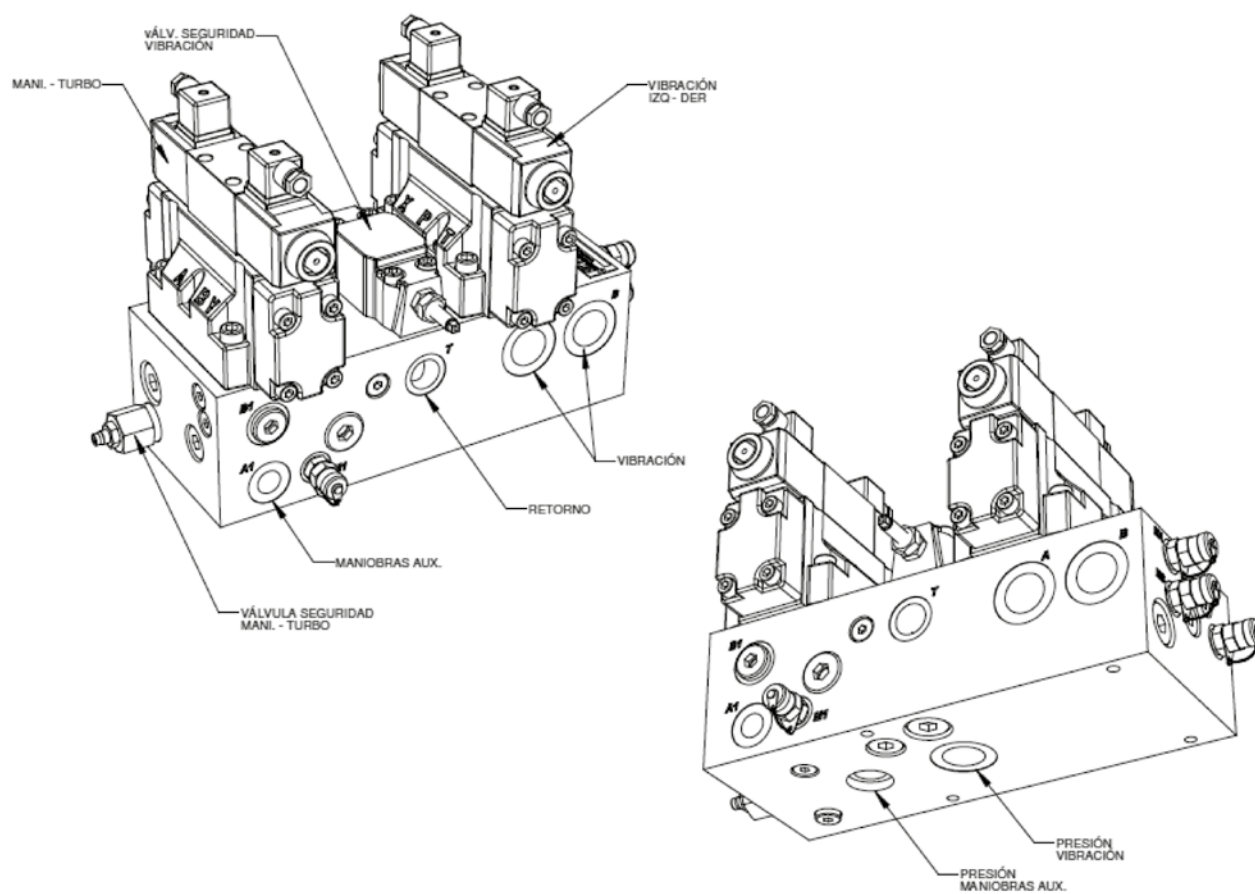


- 4 CARTRIDGE Ref. V130033
- 5 BEARING Ref. V130034
- 6 SEAL KIT Ref. V130035



- OIL LEVEL SENSOR Ref. V130010
- HYDRAULIC MANIFOLD Ref. V130021
- PRESSURE FILTER Ref. V130011
- PRESSURE AND L.S. MANIFOLD Ref. V130012
- GEAR BOX Ref. V130013
- RETURN FILTER Ref. V130014
- FILTER CARTRIDGE RETURN Ref. V130009
- AIR FILTER Ref. V130015
- PUMP DRAIN Ref. V130016
- PUMP ASPIRATION FILTER Ref. V130017
- PEELER PUMP FILTER Ref. V130018
- ASPIRATION CUT OFF VALVE Ref. V130019
- VANE PUMP Ref. V130030
- PEELER PUMP Ref. V130050 (Optional)

REMARK: it is necessary to indicate BRAND, MODEL and DISPLACEMENT or MACHINE No. when ordering PUMP SPARE PARTS.



1.3.3. ELLIPTICAL VERSION HYDRAULIC POWER UNIT (UP TO 2012)

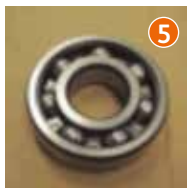


COMPLETE HYDR. POWER UNIT Ref. V130300

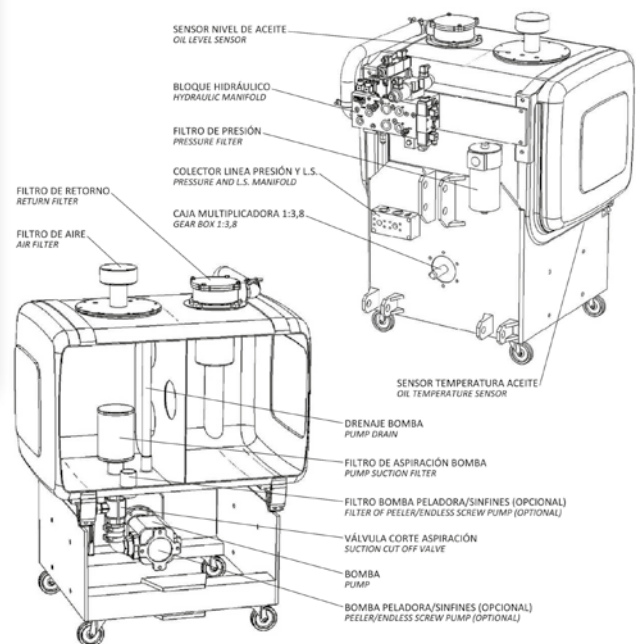
- 1 OIL TANK Ref. V130001
- 2 FRAME Ref. V130002
- 3 BRACES (x2) Ref. V130003
- 4 FENDER Ref. V130004



- 1 VANE PUMP Ref. V130030
- 2 OUTER HOUSING Ref. V130031
- 3 SHAFT Ref. V130032



- 4 CARTRIDGE Ref. V130033
- 5 SEAL KIT Ref. V130034
- 6 BEARING Ref. V130035
- 7 VARIABLE DISPLACEMENT PUMP Ref. V130040



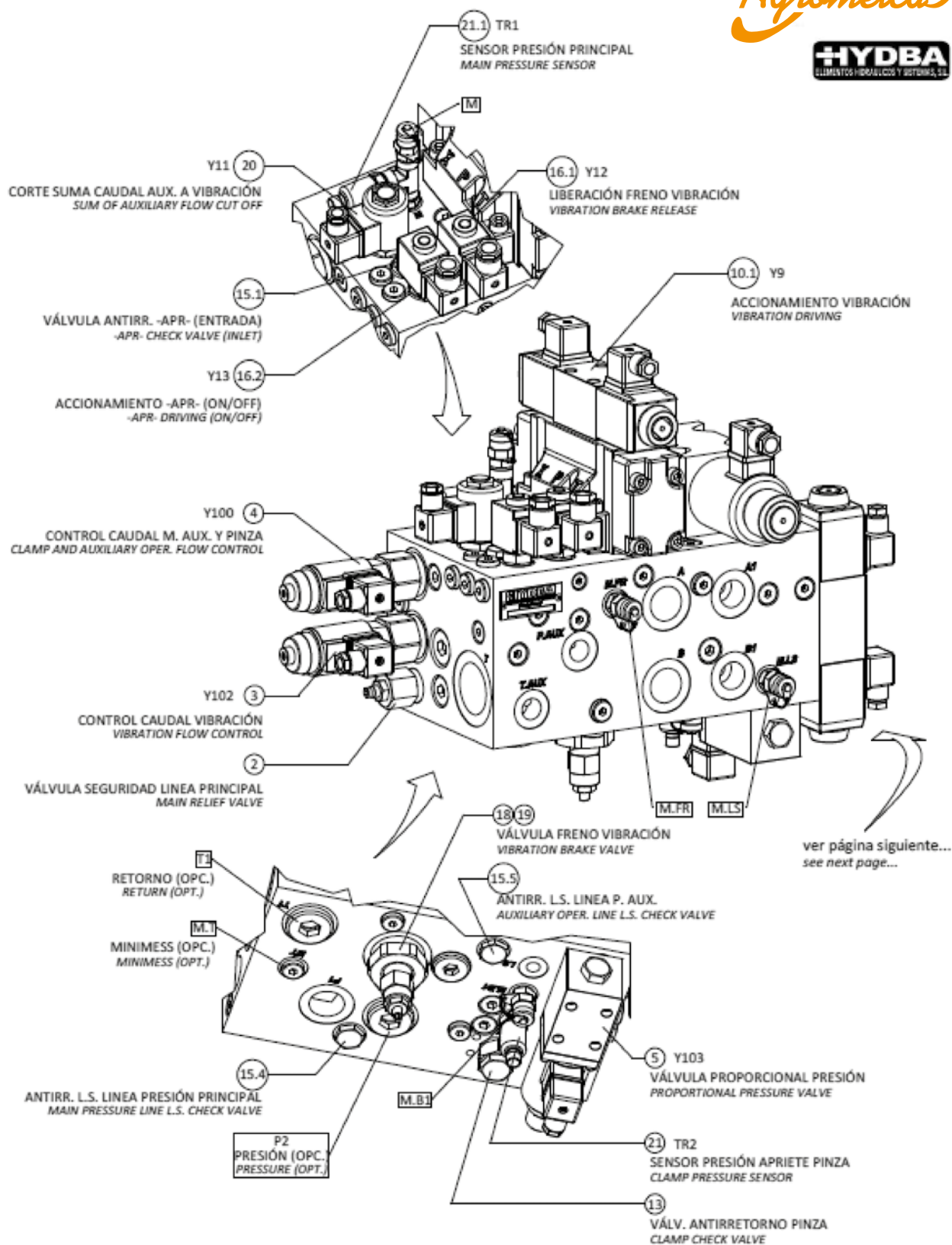
- OIL LEVEL SENSOR Ref. V130010
- HYDRAULIC MANIFOLD Ref. V130022
- PRESSURE FILTER Ref. V130011
- PRESSURE AND L.S. MANIFOLD Ref. V130012
- GEAR BOX Ref. V130013
- RETURN FILTER Ref. V130014
- FILTER CARTRIDGE RETURN Ref. V130009
- AIR FILTER Ref. V130015
- PUMP DRAIN Ref. V130016
- PUMP ASPIRATION FILTER Ref. V130017
- PEELER PUMP FILTER Ref. V130018
- ASPIRATION CUT OFF VALVE Ref. V130019
- VANE PUMP Ref. V130030
- VARIABLE DISPLACEMENT PUMP Ref. V130040
- PEELER PUMP Ref. V130050 (Optional)

REMARK: it is necessary to indicate BRAND, MODEL and DISPLACEMENT or MACHINE No. when ordering PUMP SPARE PARTS.

IDENTIFICATION

Agromelca

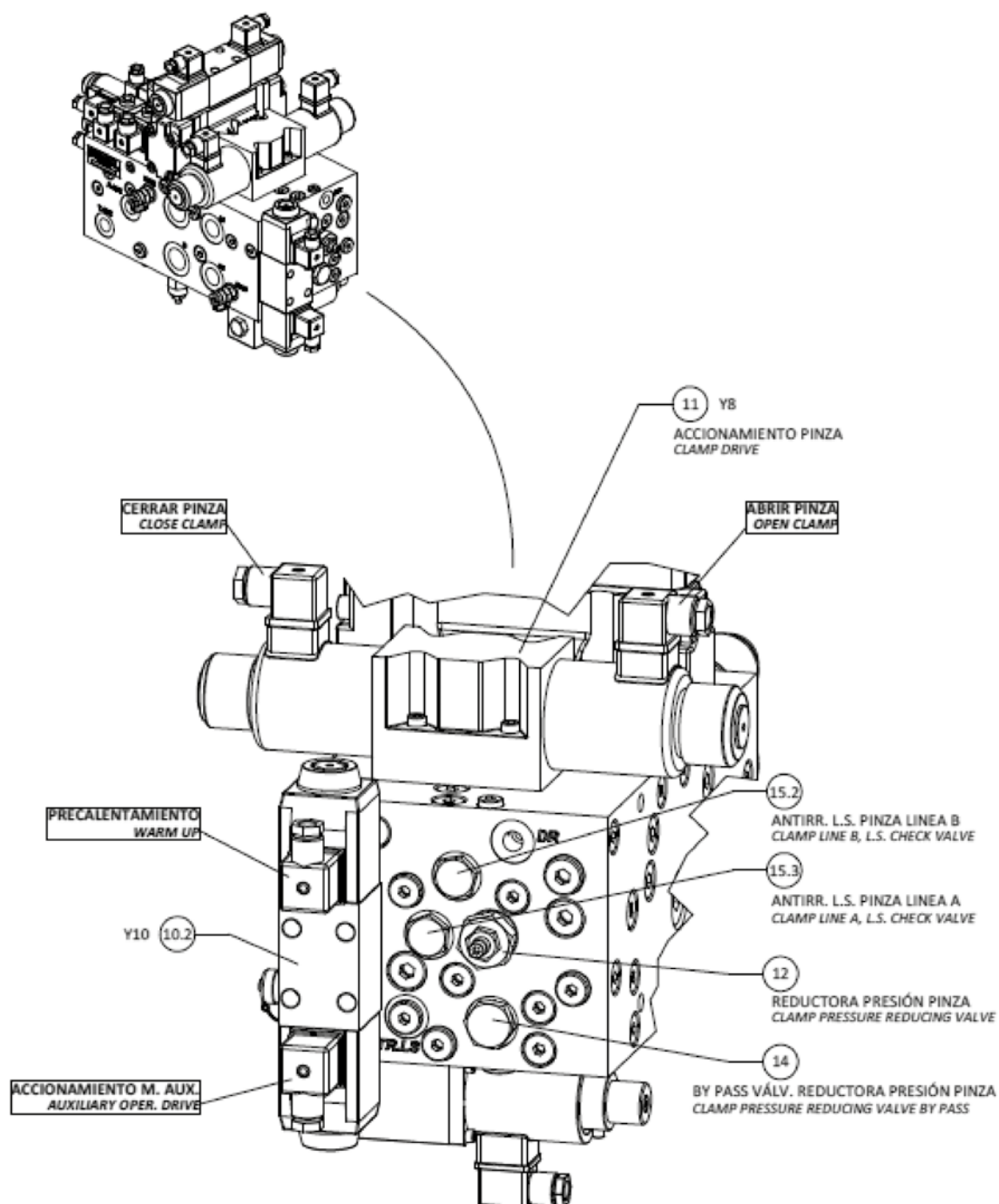
HYDBA
ELEMENTOS HIDRÁULICOS Y SISTEMAS, S.L.



IDENTIFICATION



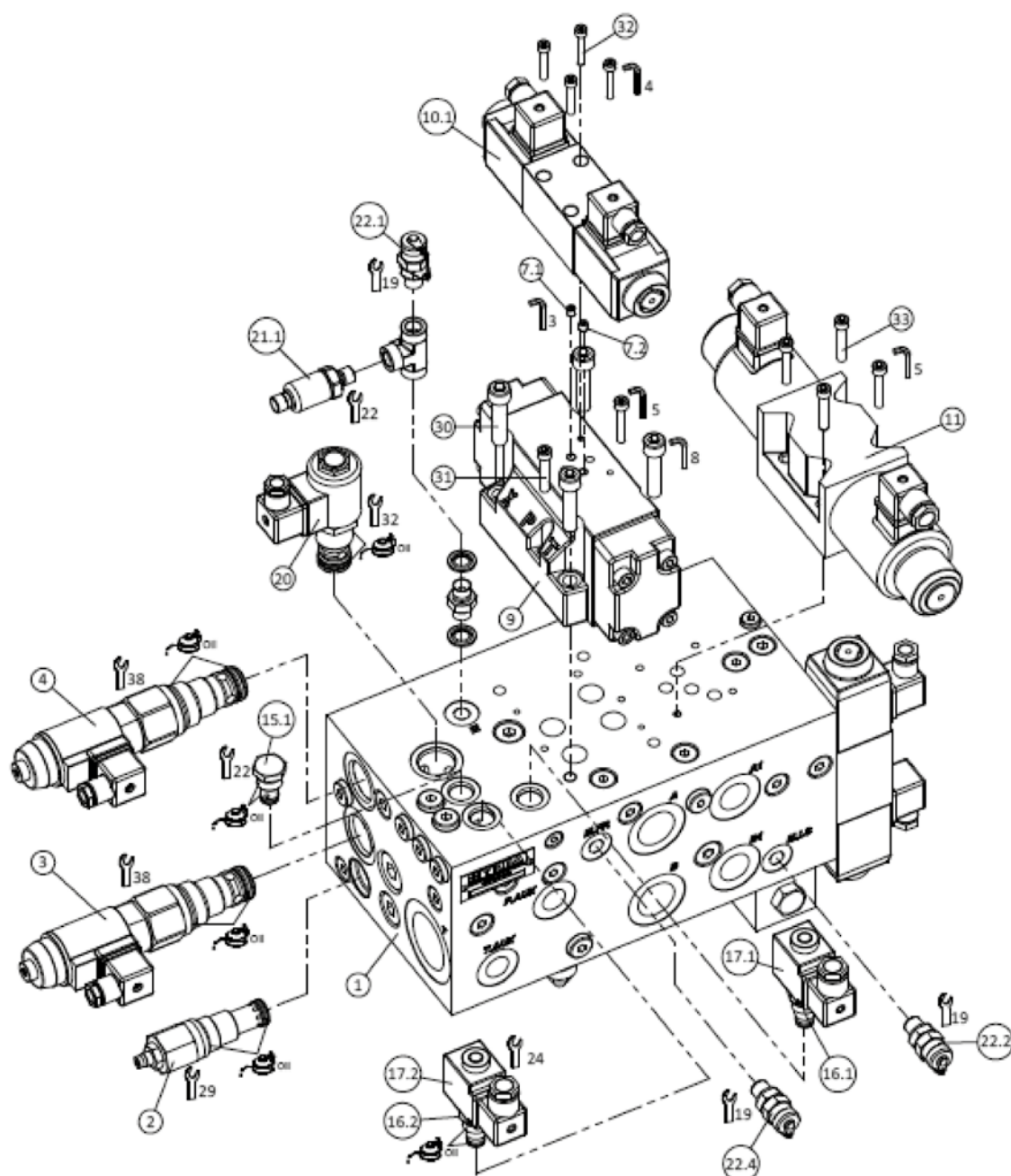
DAY BY DAY WE IMPROVE THE WORLD OF COLLECTING



DISASSEMBLY

Agromelca

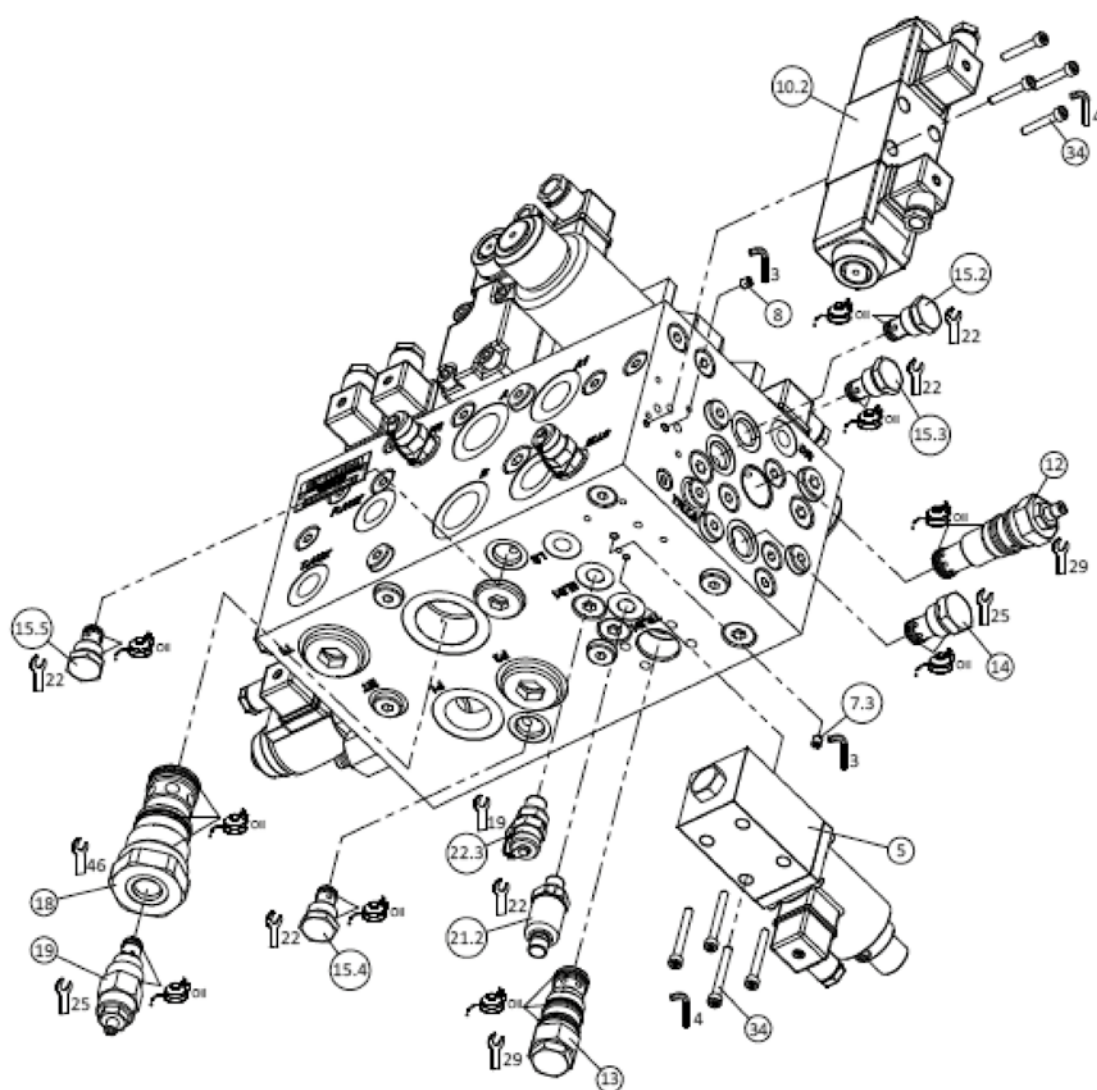
HYDBA
ELEMENTOS HIDRÁULICOS Y SISTEMAS, S.L.



DISASSEMBLY



DAY BY DAY WE IMPROVE THE WORLD OF COLLECTING



PARTS LIST



BK-2142-029-001

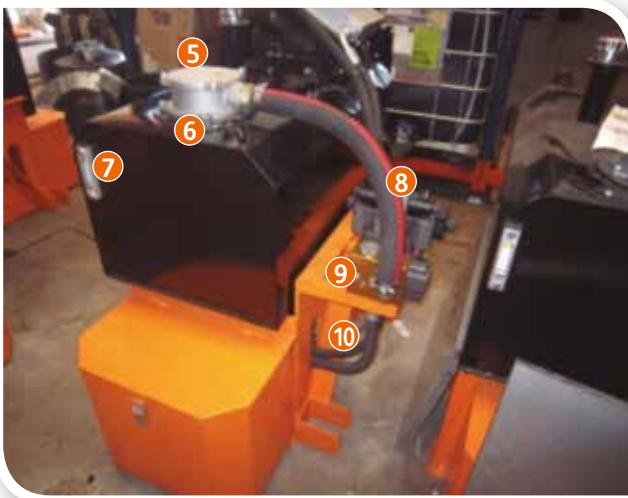
POS. ITEM	REFERENCIA PART NO.	CANT. QTY.	DESCRIPCIÓN DESCRIPTION	FABRICANTE MANUFACTURER
1	HY-2142-029-001	1	HYDRAULIC MANIFOLD BLOQUE HIDRAULICO	HYDBA
2	1AR100-P-20-S	1	CARTRIDGE RELIEF VALVE VÁLVULA SEGURIDAD CARTUCHO	INTEGRATED HYDRAULICS
3	EPV16-A-16-0-0-NF-120-S-U-13	1	PROPORTIONAL FLOW CONTROL CARTRIDGE VALVE VÁLVULA PROPORCIONAL DE CAUDAL CARTUCHO	INTEGRATED HYDRAULICS
4	EPV16-A-10-0-0-NF-120-S-U-13	1	PROPORTIONAL FLOW CONTROL CARTRIDGE VALVE VÁLVULA PROPORCIONAL DE CAUDAL CARTUCHO	INTEGRATED HYDRAULICS
5	EDG-01H	1	PROPORTIONALPRESSURE CONTROL CETOP 3 VÁLVULA PROPORCIONAL DE PRESIÓN CETOP 3	DOFLUID-HYDBA
6	M6 Ø1	1	ORIFICE M6 CHICLÉ M6	HYDBA
7	M6 Ø0.8	2	ORIFICE M6 CHICLÉ M6	HYDBA
8	M6 Ø3	1	ORIFICE M6 CHICLÉ M6	HYDBA
9	SWH-G04- B2,B6 -T-56B	1	PILOT OPER. DIRECTIONAL CTRL. VALVE CETOP 7 DISTRIBUIDOR PILOTADO CETOP 7	HYDBA
10	DG4V-3-2C-M-U-G7-60	2	SOLENOID OPER. DIRECTIONAL CTRL. VALVE CETOP 3 ELECTROVÁLVULA DIRECCIONAL CETOP 3	EATON-VICKERS
11	DG4V-5-6CJ-M-U-G6-20	1	SOLENOID OPER. DIRECTIONAL CTRL. VALVE CETOP 5 ELECTROVÁLVULA DIRECCIONAL CETOP 5	EATON-VICKERS
12	1PA100-P-20-S	1	PRESSURE REDUCING VALVE VÁLVULA REDUCTORA DE PRESIÓN CARTUCHO	INTEGRATED HYDRAULICS
13	4SK90	1	CARTRIDGE PILOT OPER. CHECK VALVE VÁLVULA ANTIRRETORNO PILOT. CARTUCHO	INTEGRATED HYDRAULICS
14	3CA50-1.5-S	1	CARTRIDGE CHECK VALVE VÁLVULA ANTIRRETORNO CARTUCHO	INTEGRATED HYDRAULICS
15	3CA30-3.0-S	5	CARTRIDGE CHECK VALVE VÁLVULA ANTIRRETORNO CARTUCHO	INTEGRATED HYDRAULICS
16	CRP-04-18-NC-A-S	2	2 WAY SOLENOID CARTRIDGE VALVE ELECTROVÁLVULA 2 VÍAS CARTUCHO	HYDRAPP
17	EC30D012CC	2	COIL BOBINA	HYDRAPP
18	LEV402-2N	1	CARTRIDGE RELIEF VALVE VÁLVULA SEGURIDAD CARTUCHO	INTEGRATED HYDRAULICS
19	1DR2-P-40S	1	CARTRIDGE RELIEF VALVE VÁLVULA SEGURIDAD CARTUCHO	INTEGRATED HYDRAULICS
20	SBV11-12C-0-12D-G-H-00	1	2 WAY SOLENOID CARTRIDGE VALVE ELECTROVÁLVULA 2 VÍAS CARTUCHO	INTEGRATED HYDRAULICS
21	PT3551	2	PRESSURE SENSOR SENSOR DE PRESIÓN	IFM ELECTRONICS
22	RM231604	4	MINIMESS 1/4"BSPP	HYDBA
23	DIN 43650	4	ELECTRICAL CONNECTOR CONECTOR ELECTRICO	
24	DIN 3852-E 1/8"BSPP	3	SCREW PLUG TAPÓN	
25	DIN 3852-E 1/4"BSPP	43	SCREW PLUG TAPÓN	
26	DIN 3852-E 3/8"BSPP	13	SCREW PLUG TAPÓN	
27	DIN 3852-E 1/2"BSPP	4	SCREW PLUG TAPÓN	
28	DIN 3852-E 3/4"BSPP	3	SCREW PLUG TAPÓN	
29	DIN 3852-E 1"BSPP	2	SCREW PLUG TAPÓN	
30	DIN 912 M10x45	4	SOCKET CAP SCREW TORNILLO ALLEN	
31	DIN 912 M6x40	6	SOCKET CAP SCREW TORNILLO ALLEN	
32	DIN 912 M5x30	8	SOCKET CAP SCREW TORNILLO ALLEN	
33	DIN 912 M5x45	4	SOCKET CAP SCREW TORNILLO ALLEN	

1.3.4. HYDRAULIC POWER UNIT TRV-2013/2015 VERSION



COMPLETE HYDR. POWER UNIT Ref. V131200

- 1 COMPLETE HEAT EXCHANGER ASSEMBLY Ref. V131030
 - Heat Exchanger Panel Ref. V131031
 - Fan Ref. V131032
 - Thermostat Ref. V131033
- 2 FILLING CAP Ref. V131003
- 3 TANK Ref. V131001
- 4 FENDER Ref. V131004



- 5 RETURN FILTER Ref. V130014
- 6 FILTER CARTRIDGE RETURN Ref. V130009
- 7 OIL LEVEL Ref. V130010
- 8 RETURN HOSE Ref. V131005
- 9 HYDRAULIC MANIFOLD Ref. V130023
- 10 FRAME Ref. V131002



- 11 ASPIRATION CUT OFF VALVE 2 1/2" Ref. V130019
- 12 SIMPLE GEAR BOX Ref. V130013
- 13 VANE PUMP Ref. V130030
- 14 VARIABLE DISPLACEMENT PUMP Ref. V130040
PEELERS PUMP Ref. V130050 (Optional)

1.3.4. HYDRAULIC POWER UNIT TRV 2013/2015 VERSION



COMPLETE HYDR. POWER UNIT Ref. V131400

- 1** COMPLETE HEAT EXCHANGER ASSEMBLY Ref. V131030
 - Heat Exchanger Panel Ref. V131031
 - Fan Ref. V131032
 - Thermostat Ref. V131033
- 2** FILLING CAP Ref. V131003
- 3** TANK Ref. V131401
- 4** FENDER Ref. V131404
- 5** RETURN FILTER CLOCK Ref. V130008



- 6** RETURN FILTER Ref. V130014
- 7** FILTER CARTRIDGE RETURN Ref. V130009
- 8** OIL LEVEL Ref. V130010
- 9** RETURN HOSE Ref. V131005
- 10** HYDRAULIC MANIFOLD Ref. V130023
- 11** FRAME Ref. V131002



- 12** ASPIRATION CUT OFF VALVE 2 1/2" Ref. V130019
- 13** SIMPLE GEAR BOX Ref. V130013
- 14** VANE PUMP Ref. V130030

MODELS WITH PEELER DEVICE

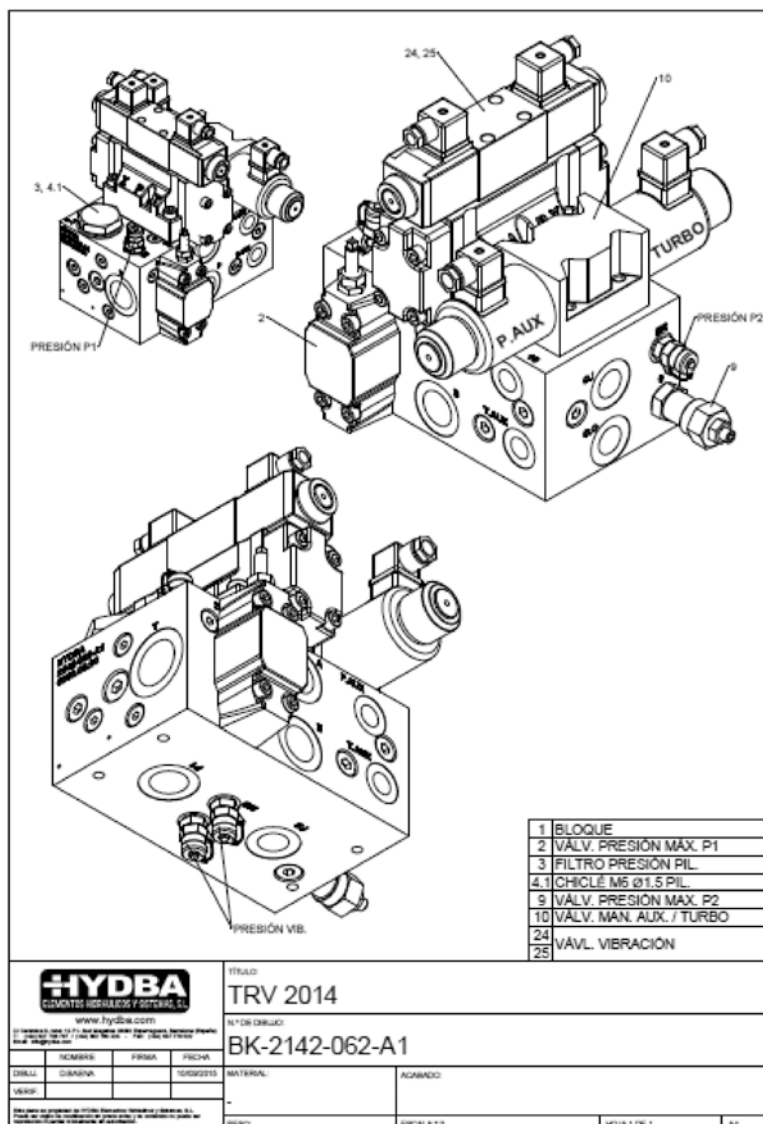


COMPLETE HYDR. POWER UNIT Ref. V131210

HYDRAULIC MANIFOLD Ref. V130023

- 1 ASPIRATION CUT OFF VALVE 1 1/2" Ref. V130019
- 2 DOUBLE GEAR BOX Ref. V131015
- 3 PEELERS PUMP Ref. V130050

- 4 PEELERS DEVICE HYDR. MANIFOLD Ref. V131020
- 5 ADAPTOR PUMP TO DOUBLE GEAR BOX Ref. V131018



1.3.5. HYDRAULIC POWER UNIT ELLIPTICAL 2013 VERSION

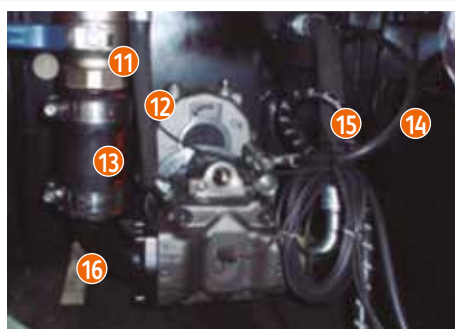


COMPLETE HYDR. POWER UNIT Ref. V131300

- ❶ FILLING CAP Ref. V131303
- ❷ RETURN FILTER Ref. V130014
- ❸ FILTER CARTRIDGE RETURN Ref. V130009
- ❹ TANK Ref. V131301
- ❺ FENDER Ref. V131304
- ❻ FRAME Ref. V131302



- ❷ HYDRAULIC MANIFOLD Ref. V131321
- ❸ OIL LEVEL Ref. V131010
- ❹ PRESSURE HOSE TRAMO 2 Ref. V131312
- ❺ CONTROL HOSE TRACT 2 Ref. V131332



- ❺ RPM SENSOR Ref. V131307
- ❻ ASPIRATION CUT OFF VALVE 2 1/2" Ref. V130019
- ❼ DRAIN HOSE Ref. V131340
- ❸ ASPIRATION HOSE Ref. V131320
- ❷ CONTROL HOSE TRACT 1 Ref. 131331

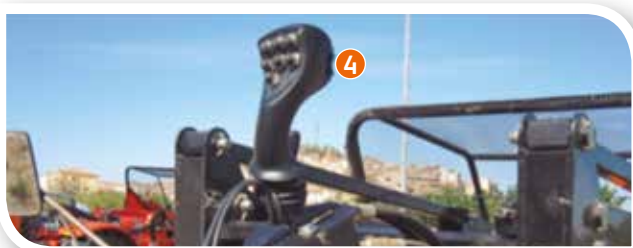
- ❺ PRESSURE HOSE TRACT 1 Ref. V131311
- ❻ FLANGE Ref. V131305
- ❼ SIMPLE GEAR BOX Ref. V130013
- ❸ CPU Ref. V131306

1.4. Electronic devices Control, power box, wiring

1.4.1. PROGRESSIVE TOWLINE VERSION



- ① PUSH BUTTON Ref. V141114
- ② JOYSTICK Ref. V141110
- ③ JOYSTICK SUPPORT Ref. V141111



- ④ PEELER WORMS PUSH BUTTON Ref. V141115



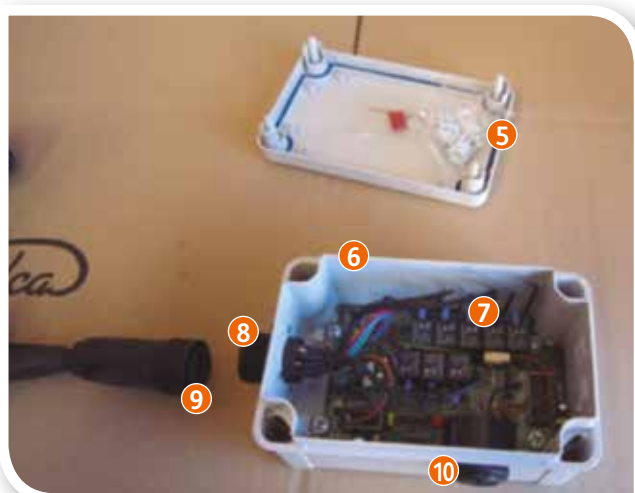
- ⑤ CONNECTION BOX Ref. V141112



- ⑥ COMPLETE POWER PACK Ref. V141400

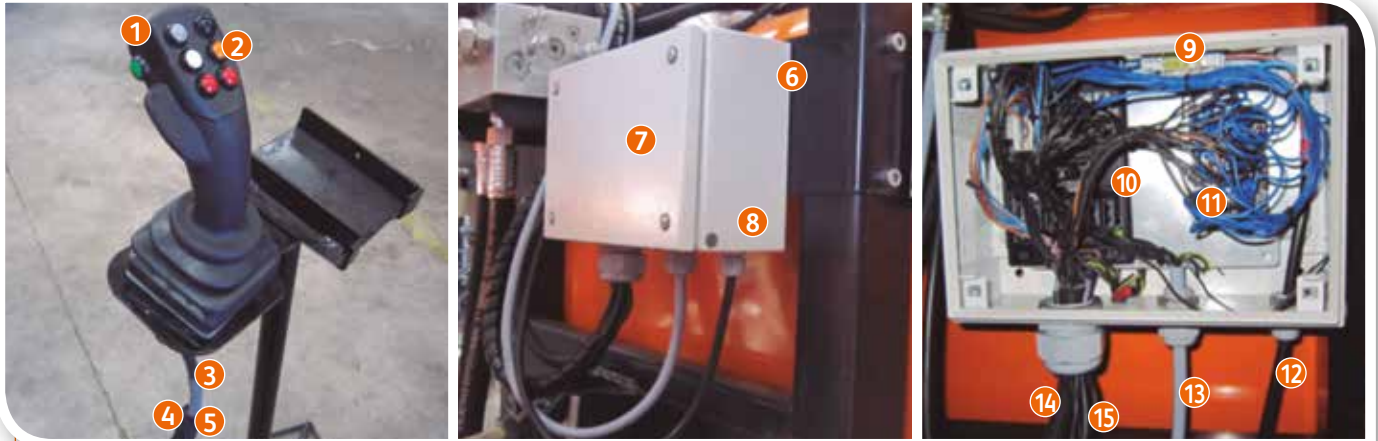


- 1 COMPLETE POWER PACK Ref. V141400
- 2 CONNECTION BOX Ref. V141112
- 3 MAIN CONNECTION WIRING Ref. V141404
- 4 JOYSTICK WIRING Ref. V141113



- 5 LID Ref. V141401
- 6 BOX Ref. V141402
- 7 ELECTRONIC BOARD Ref. V141410
- 8 CONNECTOR Ref. V141411
- 9 CONNECTOR Ref. V141412
- 10 BUZZER Ref. V141403

1.4.2. TRV (JOYSTICK) VERSION 2012



- ① CONTROL FOR MACHINE MOVEMENTS AND VIBRATION Ref. V142100
- ② PUSH BUTTON (x8) Ref. V142101
(Indicate push button colour)
- ③ WIRING No. 1 Ref. V142103
- ④ JOYSTICK MALE CONNECTOR Ref. V142104
- ⑤ JOYSTICK FEMALE CONNECTOR Ref. V142105
- ⑥ COMPLETE POWER PACK Ref. 142200
- ⑦ LID Ref. V142203
- ⑧ BOX Ref. V142204

COMPLETE POWER PACK Ref. 142200

- ⑨ FUSES BOARD Ref. V142205
- ⑩ CPU Ref. V142201
- ⑪ RELAYS Ref. V142202
(Quantity of relays depends on model)
- ⑫ POWER WIRING Ref. V142211
- ⑬ JOYSTICK WIRING Ref. V142212
- ⑭ VALVES MANIFOLD WIRING Ref. V142213
- ⑮ VIBRATION MANIFOLD WIRING Ref. V142214

1.4.3. TRV VERSION (JOYSTICKS BOARD) 2012



- ① CONTROL FOR MACHINE MOVEMENTS AND VIBRATION Ref. V143100
- ② JOYSTICK (x4) Ref. V143101
- ③ SELECTOR (x4) Ref. V143102
- ④ BOX Ref. V143302
- ⑤ BOX WIRING Ref. V143105

- ⑥ POWER WIRING Ref. V143103
- ⑦ GENERAL WIRING Ref. V143104

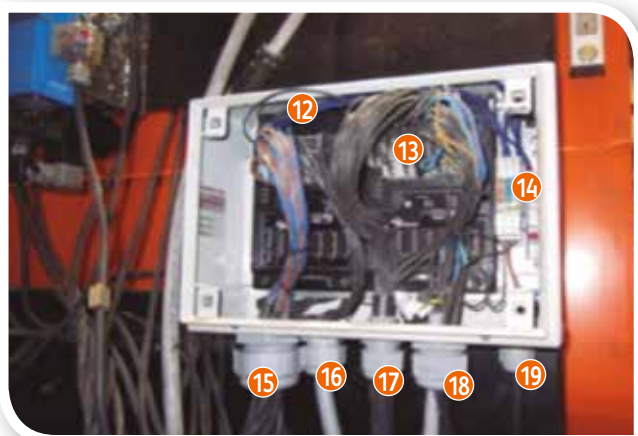
1.4.4. ELLIPTICAL VERSION 2012



- 1 JOYSTICK Ref. V144100
- 2 PUSH BUTTON Ref. V142101 (indicate colour)
- 3 CONTROL PANEL Ref. V144101
Ask for separate components



- 4 WIRING No. 1 JOYSTICK Ref. V144103
- 5 WIRING No. 2 CONTROL PANEL Ref. V144105
- 6 CONTROL PANEL CONNECTOR Ref. V144106
- 7 JOYSTICK FEMALE CONNECTOR Ref. V144104
- 8 JOYSTICK MALE CONNECTOR Ref. V144107
- 9 COMPLETE POWER PACK Ref. V144200
- 10 LID Ref. V142203
- 11 BOX Ref. V142204



- 12 CPU 1 Ref. V144201
- 13 CPU 2 Ref. V144202
- 14 FUSE BOARD Ref. V144205
- 15 VIBRATION MANIFOLD WIRING Ref. V144211
- 16 CONTROL PANEL WIRING Ref. V144212
- 17 VALVES MANIFOLD WIRING Ref. V144213
- 18 CONTROL + VIBRATION MANIFOLD AND SENSORS WIRING Ref. V144214
- 19 POWER WIRING Ref. V144215

1.4.5. TRV 2013/2017 (JOYSTICK)



TRV JOYSTICK CONTROL

- ❶ COMPLETE POWER PACK Ref. V145200
- ❷ WIRING No. 1 TRV Ref. V145103
- ❸ WIRING No. 2 Ref. V145104
- ❹ E.V. CONNECTORS Ref. V145105
- ❺ PUSH BUTTON Ref. V142101 (Indicate colour)
- ❻ JOYSTICK Ref. V145100

NOTA: For parts of ELECTRONIC SYSTEM components, it is necessary to indicate MODEL and NUMBER of FRAME.

1.4.6. TRV 2013/2017 (CAJA JOYSTICKS)



ELECTRICAL TRV CONTROL

- ❶ COMPLETE POWER PACK Ref. V146200
- ❷ JOYSTICK Ref. V146100
- ❸ PUSH BUTTONS Ref. V146101
- ❹ WIRING No. 1 Ref. V146103
- ❺ WIRING No. 2 Ref. V146104
- ❻ E.V. CONNECTORS Ref. V146105

NOTA: for spare parts of ELECTRONIC SYSTEM components, it is necessary to indicate MODEL and NUMBER of FRAME MACHINE.

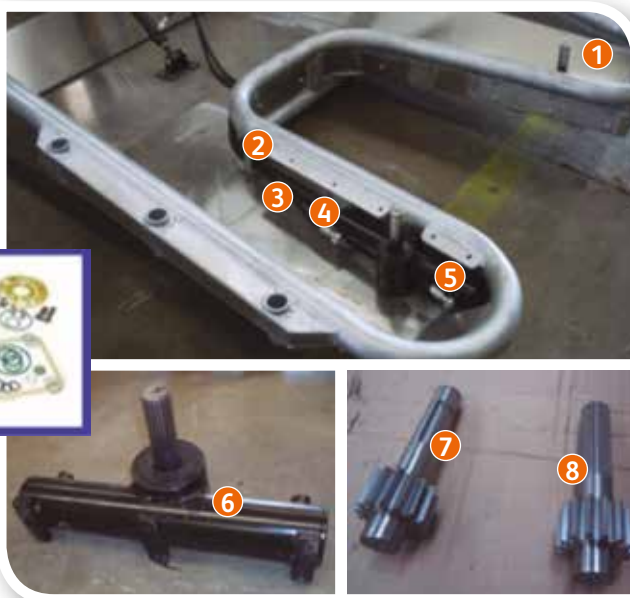
1.4.7. ELLIPTICAL 2013



ELLIPTICAL CONTROL

- ❶ JOYSTICK Ref. V147100
- ❷ PUSH BUTTONS Ref. V147101
- ❸ DISPLAY Ref. V147102
- ❹ DISPLAY WIRING Ref. V147104
- ❺ JOYSTICK WIRING Ref. V147103

2. Collection platform



- 1 ALUMINUM BOX Ref. V20000 (Indicate Model)
- 2 FLANGE FOR HOSE FIXING (x4) Ref. 200103
- 3 HOSE 1 TRACT 1 (x2) Ref. V200211
- 4 HOSE 2 TRACT 1 (x2) Ref. V200221
- 5 ROTARY CYLINDER FOR UMBRELLA OPENING (x2) Ref. V200200
- 6 ROTARY CYLINDER FOR UMBRELLA OPENING (splined shaft) (x2) Ref. V200201
- 7 STRAIGHT KEY SHAFT (x2) Ref. V200230
- 8 SPLINED SHAFT (x2) Ref. V200231
- 9 SEAL KIT (x2) Ref. V200202



- 10 PLATFORM SUPPORTS (x2) Ref. V200105
- 11 HOSE 1 TRACT 1 OPEN/CLOSE DOOR CYLINDER Ref. V200311
- 12 HOSE 2 TRACT 1 OPEN/CLOSE DOOR CYLINDER Ref. V200321
- 13 OPEN/CLOSE DOOR CYLINDER Ref. V200300
- 14 HOSE 1 TRACT 2 OPEN/CLOSE UMBRELLA CYLINDER Ref. V200212
- 15 HOSE 2 TRACT 2 OPEN/CLOSE UMBRELLA CYLINDER Ref. V200222
- 16 DOOR Ref. V200101



- 17 HINGES (X2) REF. V200102

REMARK: it is necessary to indicate MODEL or MACHINE No. when ordering PLATFORM SPARE PARTS.



- 1 UPPER SUPPORT Ref. V200304
- 2 OPEN/CLOSE DOOR CYLINDER Ref. V200300
- 3 BOLT (x2) Ref. V200303
- 4 LOWER SUPPORT Ref. V200305
- 5 SEAL KIT Ref. V200302



- 6 RETENTION VALVE Ref. V200104
- 7 PLATFORM SUPPORTS (x2) Ref. V200105



- 8 HOSE 1 TRACT 3 OPEN/CLOSE UMBRELLA CYLINDER Ref. V200213
- 9 HOSE 2 TRACT 3 OPEN/CLOSE UMBRELLA CYLINDER Ref. V200223
- 10 HOSE 1 TRACT 3 OPEN/CLOSE DOOR CYLINDER Ref. V200313
- 11 HOSE 2 TRACT 3 OPEN/CLOSE DOOR CYLINDER Ref. V200323

REMARK: it is necessary to indicate MODEL or MACHINE No. when ordering PLATFORM SPARE PARTS.

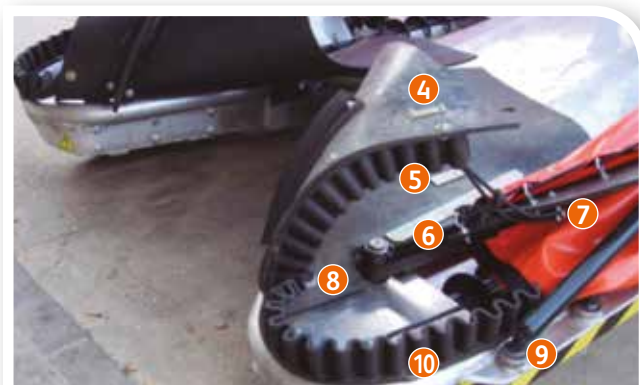


- 1 UPPER COMB Ref. V200401
- 2 FRONT FRAME Ref. V200400
- 3 SIDE COMB (x2) Ref. V200403
- 4 NET Ref. V200404
- 5 LOWER COMB (x2) Ref. V200402
- 6 CANVAS FIXING PLATEN (x10) Ref. V200405
- 7 BAR STOP PROTECTOR (x2) Ref. V200406
- 8 LEFT CANVAS Ref. V200501
- 9 RIGHT CANVAS Ref. V200502

REMARK: it is necessary to indicate MODEL or MACHINE No. when ordering PLATFORM SPARE PARTS.



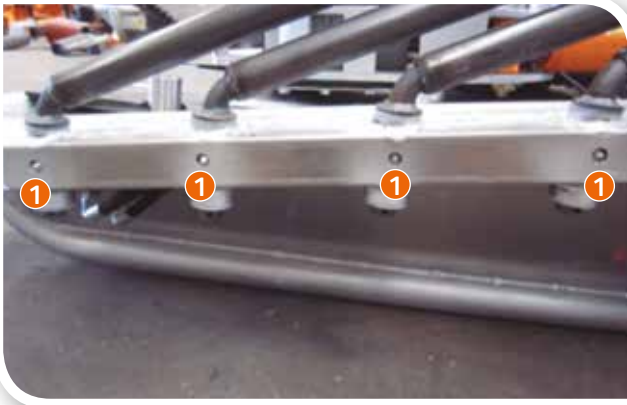
- 1 FLAP (x2) Ref. V200407
PNA80/DGA80PLUS: Ref. V200407.80
PGA100/DGA100: Ref. V200407.100
PGA125/PGA140: Ref. V200407.125
- 2 REAR RUBBER SUPPORT (x2)
Depending on Umbrella Model:
PNA80/DGA80PLUS: Ref. V200421 (17,5 cm)
PGA100/DGA100: Ref. V200422 (25 cm)
PGA125/PGA140: Ref. V200423 (35 cm)
- 3 FRONT RUBBER SUPPORT (x2)
Depending on Umbrella Model:
PNA80/DGA80PLUS: Ref. V200422 (25 cm)
PGA100/DGA100: Ref. V200423 (35 cm)
PGA125/PGA140: Ref. V200423 (35 cm)



- 4 PLATEN TYPE 1 (x2) Ref. V200411
- 5 PLATEN TYPE 2 (x8) Ref. V200412
- 6 PLATEN TYPE 3 (x2) Ref. V200413
- 7 CANVAS FIXING SHACKLE (x10) Ref. V200503
- 8 PLATEN TYPE 4 (x2)
Depending on Umbrella Model:
Mod. PGA Ref. V200414
Mod. PNA Ref. V200415
- 9 BAR BOLTS (x8 or x6) Ref. V200510
- 10 WAVE RUBBER (x2) Ref. V200416
- 11 ROUND HOOK (x2) Ref. V200417
- 12 PLATEN TYPE 4 (x2) Mod. PNA Ref. V200415
- 13 PLATEN TYPE 4 (x2) Mod. PGA Ref. V200414



REMARK: it is necessary to indicate MODEL or MACHINE No. when ordering PLATFORM SPARE PARTS.



1 GREASE POINTS (x8) Ref. V200516



- 2 ROD FOR LEFT CANVAS
Model PNA Ref. V200541
Model PGA Ref. V200543
- 3 ROD FOR RIGHT CANVAS
Model PNA Ref. V200542
Model PGA Ref. V200544



FOR MODELS WITH PEELER DEVICE (DGA):

- 4 ROD 1 FOR LEFT CANVAS Ref. V200545
- 5 ROD 1 FOR RIGHT CANVAS Ref. V200547
- 6 ROD 2 FOR LEFT CANVAS Ref. V200546
- 7 ROD 2 FOR RIGHT CANVAS Ref. V200548

REMARK: it is necessary to indicate MODEL or MACHINE No. when ordering PLATFORM SPARE PARTS.



- 1** BAR No. 2 (x2) COMPLETE WITH BOLT
Minimum Angle Ref. V200524
Regular Angle Ref. V200525
- 2** BAR No. 3 (x2) COMPLETE WITH BOLT
Minimum Angle Ref. V200526
Regular Angle Ref. V200527
- 3** BAR No. 4 (x2) COMPLETE WITH BOLT
Minimum Angle Ref. V200528
Regular Angle Ref. V200529
- 4** BAR No. 5 (x2) COMPLETE WITH BOLT
Minimum Angle Ref. V200530
Regular Angle Ref. V200531



- 5** BAR PROTECTOR (x8) Ref. V200511
- 6** BAR CAP (x8) Ref. V200512

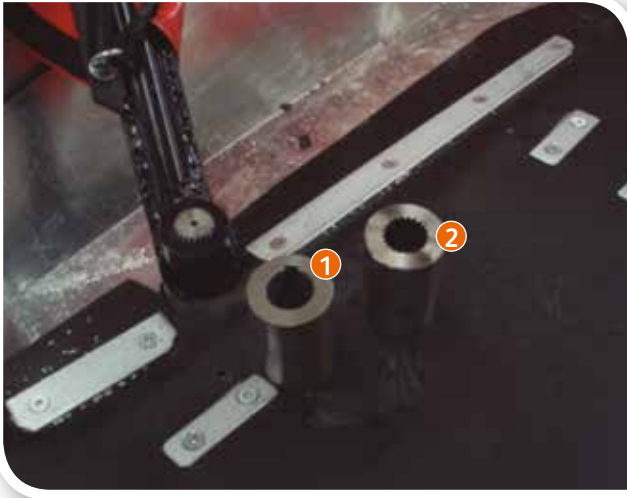


- 7** PIN (x16) Ref. V200513
- 8** WASHER (x16) Ref. V200514
- 9** NYLON CAP (x16) Ref. V200515



- 10** RIGHT OPENING BAR COMPLETE WITH PIVOT BUSHING BOLT:
Minimum Angle Ref. V200522
Regular Angle Ref. V200523
RIGHT OPENING BAR COMPLETE WITH GROOVED BUSHING BOLT:
Minimum Angle Ref. V200582
Regular Angle Ref. V200583
- 11** LEFT OPENING BAR COMPLETE WITH PIVOT BUSHING BOLT:
Minimum Angle Ref. V200520
Regular Angle Ref. V200521
LEFT OPENING BAR COMPLETE WITH GROOVED BUSHING BOLT:
Minimum Angle Ref. V200580
Regular Angle Ref. V200581
- 12** LEFT CANVAS Ref. V200501
- 13** RIGHT CANVAS Ref. V200502

REMARK: it is necessary to indicate PLATFORM MODEL or CANVAS DIMENSIONS or MACHINE No. when ordering CANVAS, OPENING BARS or BAR BOLTS SPARE PARTS.



- 1 OPENING BAR CAP FOR STRAIGHT KEY SHAFT (x2)
Ref. V200551
- 2 OPENING BAR CAP FOR SPLINED SHAFT (x2)
Ref. V200552



COMPLETE CANVAS SUPPLEMENT (BARS + CANVAS) 0,5m
Ref. V200560

- 3 BAR SUPPLEMENT 0,5m Ref. V200561
LEFT CANVAS SUPPLEMENT 0,5m Ref. V200562
RIGHT CANVAS SUPPLEMENT 0,5m Ref. V200563

COMPLETE CANVAS SUPPLEMENT (BARS + CANVAS) 1m
Ref. V200570

- 4 BAR SUPPLEMENT 1m Ref. V200571
LEFT CANVAS SUPPLEMENT 1m Ref. V200572
RIGHT CANVAS SUPPLEMENT 1m Ref. V200573

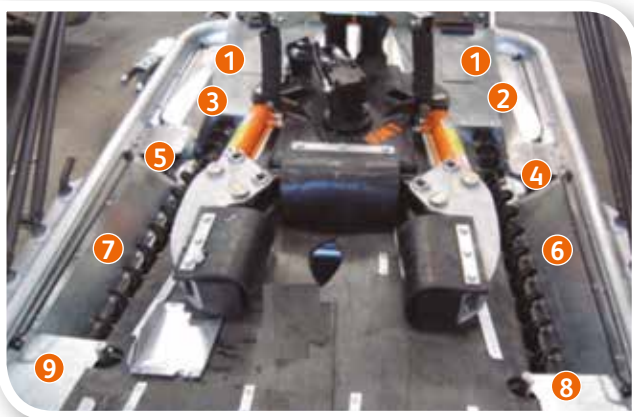


- 5 CANVAS TRIANGLES (x2) Ref. V200580



3. Annexes

3.1. Machines equipped with peeler device

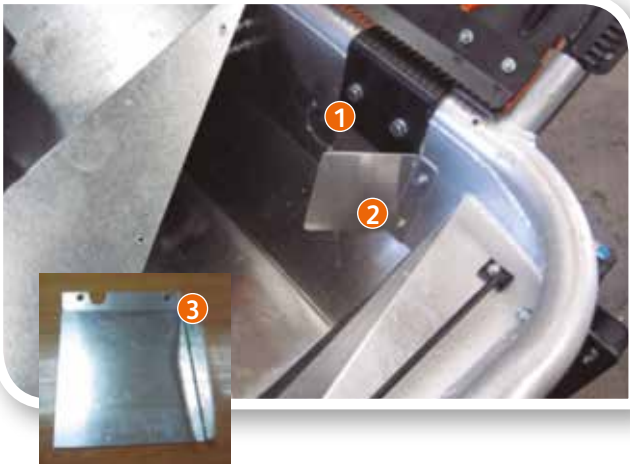


- 1** WINDOW (x2) Ref. V300138
- 2** LEFT PLATE No. 1
DGA80+ Ref. V300111
DGA100 Ref. V300121
- 3** RIGHT PLATE No. 1
DGA80+ Ref. V300112
DGA100 Ref. V300122
- 4** LEFT PLATE No. 2
DGA80+ Ref. V300113
DGA100 Ref. V300123
- 5** RIGHT PLATE No. 2
DGA80+ Ref. V300114
DGA100 Ref. V300124
- 6** CHANNEL PLATE LEFT WORM
DGA80+ Ref. V300115
DGA100 Ref. V300125
- 7** CHANNEL PLATE RIGHT WORM
DGA80+ Ref. V300116
DGA100 Ref. V300126
- 8** LEFT PLATE No. 4
DGA80+ Ref. V300117
DGA100 Ref. V300127
- 9** RIGHT PLATE No. 4
DGA80+ Ref. V300118
DGA100 Ref. V300128

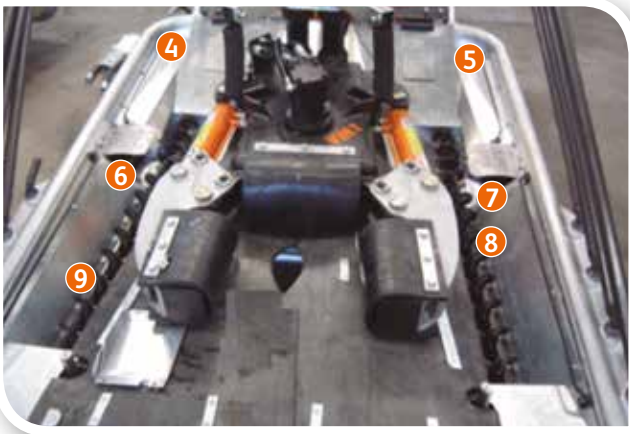


- 10** PLATE No. 5
DGA80+ Ref. V300129
DGA100 Ref. V300130

REMARK: it is necessary to indicate MODEL or MACHINE
No. when ordering PLATFORM/PEELER SPARE PARTS.



- 1 FILL SENSOR (x2) Ref. V300200
- 2 PLATE No. 6 (x2) Ref. V300131
- 3 LOCKING LIDS SET (x4) Ref. V300133



- 4 UPPER RIGHT LOCKING LID Ref. V300134
- 5 UPPER LEFT LOCKING LID Ref. V300135
- 6 LOWER RIGHT LOCKING LID Ref. V300136
- 7 LOWER LEFT LOCKING LID Ref. V300137
- 8 LEFT CONVEYOR WORM Ref. V300301
- 9 RIGHT CONVEYOR WORM Ref. V300302

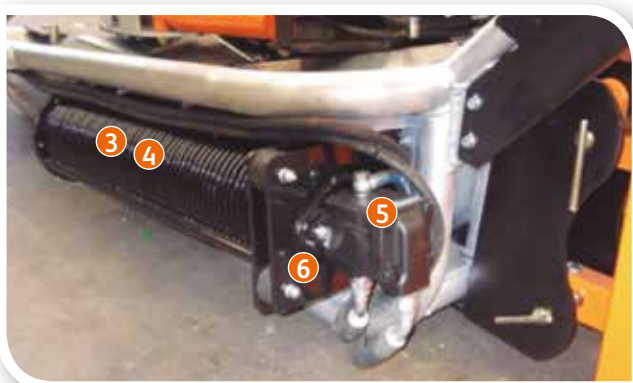


- 10 WORM MOTOR (x2) Ref. V300303
Ask for separate components

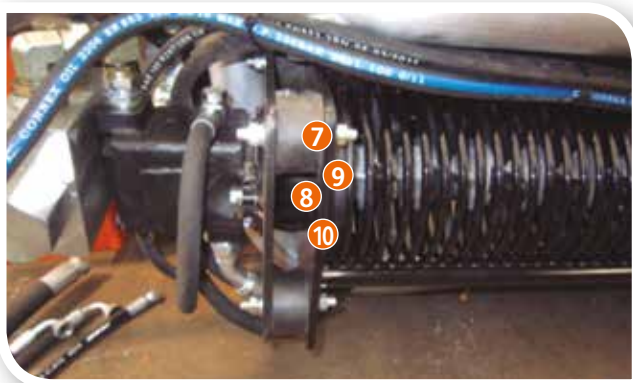
REMARK: it is necessary to indicate MODEL or MACHINE No. when ordering PLATFORM/PEELER SPARE PARTS.



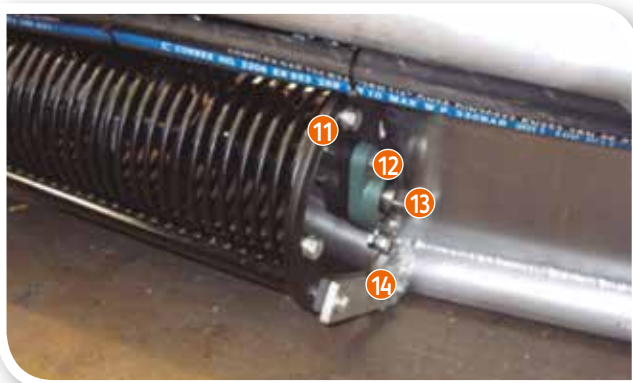
- 1 LEFT PEELER COMPLETE KIT (Motor not included)
Ref. V300401
- 2 RIGHT PEELER COMPLETE KIT (Motor not included)
Ref. V300402



- 3 LEFT PEELER BODY Ref. V300410
- 4 RIGHT PEELER BODY Ref. V300411
- 5 PEELER MOTOR (x2) Ref. V300420
- 6 MOTOR SUPPORT (x2) Ref. V300421

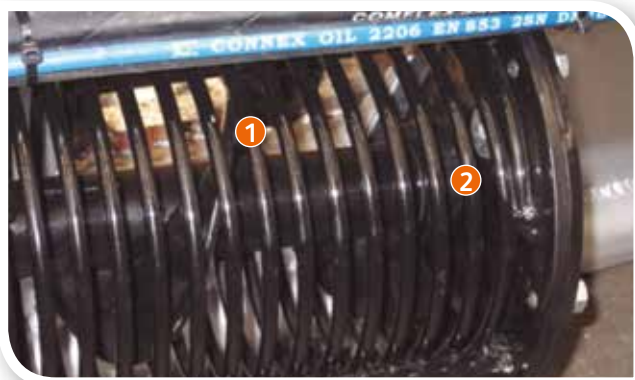


- 7 SILENTBLOCKS (x8) Ref. V300422
- 8 UNION SHAFT MOTOR-PEELER (x2) Ref. V300423
- 9 SHAFT BEARINGS (x4) Ref. V300428
- 10 RETAINING RING (x2) Ref. V300429



- 11 PEELER LOCKING LID (x2) Ref. V300424
- 12 BEARING AND SUPPORT (x2) Ref. V300425
- 13 SHAFT (x2) Ref. V300426
- 14 SUPPORT PLATE (x2) Ref. V300427

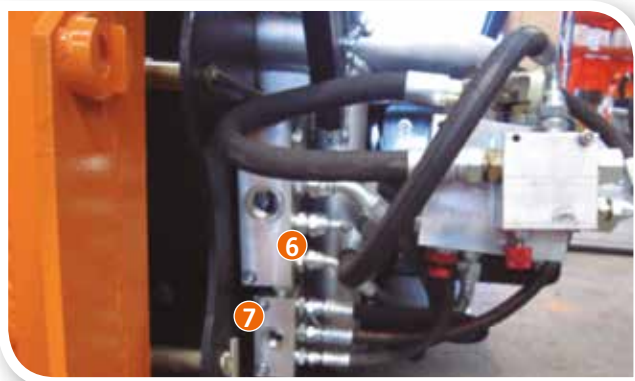
REMARK: it is necessary to indicate MODEL or MACHINE
No. when ordering PLATFORM/PEELER SPARE PARTS.



- 1 LEFT PEELER CONVEYOR WORM Ref. V300431
RIGHT PEELER CONVEYOR WORM Ref. V300432
- 2 CAGE NUT (x2) Ref. V300433



- 3 SEPARATOR 8 TIPS Ref. V300443
- 4 PEELER SIMPLE RUBBER
Hard Composite Ref. V300454
Soft Composite Ref. V300455
- 5 PEELER DOUBLE RUBBER Ref. V300453



- 6 UNION FRAME 1 Ref. V300501
- 7 UNION FRAME 2 Ref. V300502



- 8 PEELERS FLOW REGULATOR V300601
- 9 WORM MOTORS FLOW REGULATOR V300602

REMARK: it is necessary to indicate MODEL or MACHINE
No. when ordering PLATFORM/PEELER SPARE PARTS.

3.2. Machines equipped with Zaytun vibration head



- 1 VIBRATION HEAD SUPPORT Ref. V320150
- 2 SILENT BLOCKS (x2) Ref. V111002
- 3 CAPS (x2) Ref. V320005
- 4 CHAIN Ref. V320003
- 5 CHAIN PROTECTOR Ref. V320007
- 6 NYLON GUIDINGS (x4) Ref. V320009



- 7 COMPLETE VIBRATION HEAD Ref. V320000
- 8 COMPLETE RIGHT ARM Ref. V320110
- 9 RIGHT ARM FRAME Ref. V320111
- 10 LOG STOP BLOCK Ref. V320171
- 11 CLAMPING ARM BOLT (x2) Ref. V320004
- 12 CENTRAL BOX Ref. V320001
- 13 COMPLETE LEFT ARM Ref. V320120
- 14 LEFT ARM FRAME Ref. V320121
- 15 CLAMPING ARM FLAP (x2)
Regular Composite Ref. V320152
Fabric Composite Ref. V320151
- 16 FLAPS FIXING PLATEN (x4) Ref. V320141



- 16 FLAPS FIXING PLATEN (x4) Ref. V320141
- 17 CLAMPING ARM BLOCK (x2)
Regular Composite Ref. V320131
Soft Composite Ref. V320132
- 18 SIDE COVER Ref. V320006



- 19 UPPER SUPPLEMENT Ref. V320011
- 20 COUNTERWEIGHT Ref. V320010
- 21 REDUCTION SUPPLEMENT Ref. V320012
- 22 COUNTERWEIGHT SHAFT Ref. V320008



- 1 BOLT (x4) Ref. V320103
NUT (x2) Ref. V113104
- 2 TIGHTEN CLAMP CYLINDER (x2) Ref. V320100



- 2 TIGHTEN CLAMP CYLINDER (x2) Ref. V320100
- 3 SEAL KIT (x2) Ref. V320102

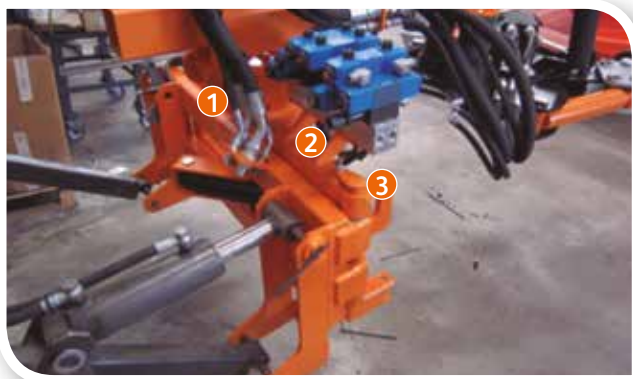


- 4 HOSE 1 TRACT 1 (x2) Ref. V320311
- 5 HOSE 2 TRACT 1 (x2) Ref. V320321



- 6 DOUBLE CHECK VALVE Ref. V320330
- 7 HOSE FLANGE (x3) Ref. V113001

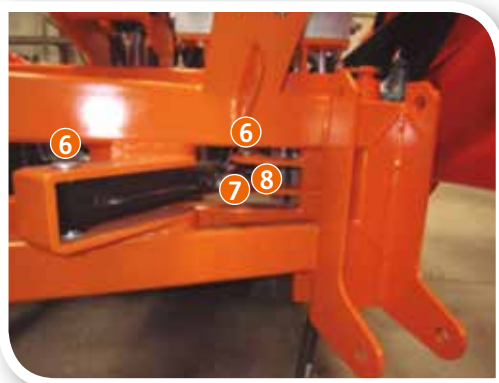
3.3. Machines equipped with hinge device



- ❶ FIX FRAME BASE Ref. V331110
- ❷ MOBILE FRAME BASE Ref. V331111
- ❸ HINGE BOLT Ref. V330112



- ❹ HINGE CYLINDER Ref. V330200
- ❺ SEAL KIT Ref. V330202

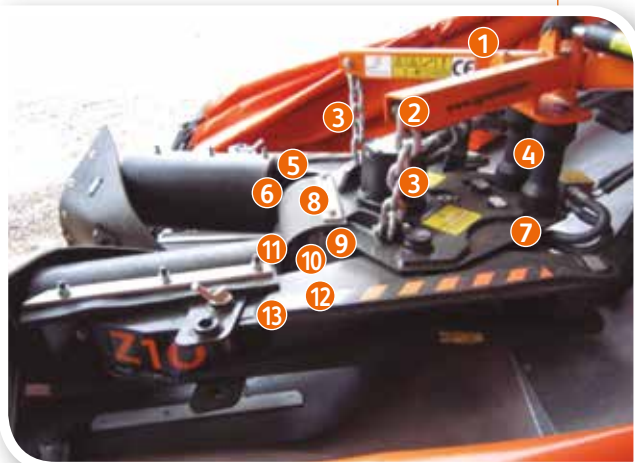


- ❻ BOLT (x2) Ref. V330203
NUT (x2) Ref. V113104
- ❼ HOSE 1 TRACT 1 HINGE Ref. V330211
- ❽ HOSE 2 TRACT 1 HINGE Ref. V330221



- ❾ GREASE POINT Ref. V200516

3.4. Machines equipped with Z10 vibration head 2013-2014



- 1 VIBRATION HEAD SUPPORT Ref. V121150
- 2 CAPS (x2) Ref. V111005
- 3 CHAIN (x2) Ref. V111003 (Indicate links)
- 4 SILENT BLOCKS (x2) Ref. V111002
- COMPLETE VIBRATION HEAD Ref. V330000
- 5 COMPLETE RIGHT ARM Ref. V330110
- 6 RIGHT ARM FRAME Ref. V330111
- 7 CENTRAL BOX Ref. V330001
- 8 LOG STOP FIXING PLATEN (x2) Ref. V330142
- 9 PROTECTION COVER Ref. V330006
- 10 LOG STOP BLOCK (*) Ref. V330171
- 11 LOG STOP FLAP (*) Ref. V330180
- 12 COMPLETE LEFT ARM Ref. V330120
- 13 LEFT ARM FRAME Ref. V330121

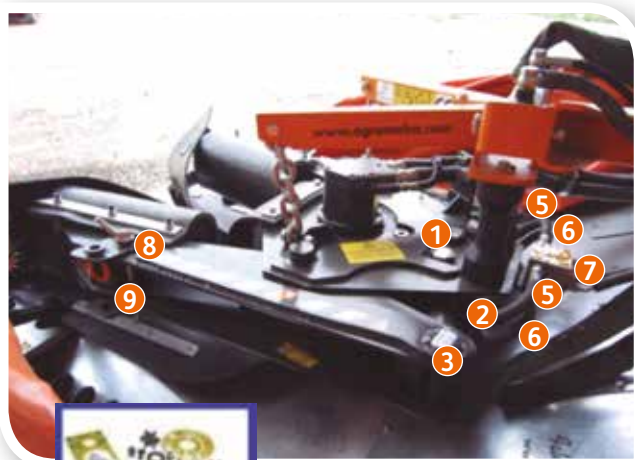


- 14 CLAMPING ARM BOLTS 280xØ40 (x2) Ref. V330004
- 15 CLAMPING ARM BOLTS 280xØ50 (x2) Ref. V330005
- NUTS (x2) Ref. V113104
- 16 FLAPS FIXING PLATEN (x4) Ref. V330141
- 17 CLAMPING ARM BLOCK (x2)
- Regular Composite Ref. V330131
- Soft Composite Ref. V330132
- 18 CLAMPING ARM OUTER FLAP (x2)
- Regular Composite Ref. V330152
- Soft Composite Ref. V330153
- Fabric Composite Ref. V330150
- 19 CLAMPING ARM INNER FLAP (x2)
- Regular Composite Ref. V330160
- Soft Composite Ref. V330161
- 20 NYLON GUIDINGS (x2) Ref. V330009



- 21 COUNTERWEIGHT Ref. V330010
- 22 COUNTERWEIGHT SHAFT Ref. V330008
- 23 COUNTERWEIGHT SHAFT (for vibration heads from 2014 on) Ref. V330014
- 24 INTERMEDIATE SUPPLEMENT 10mm Ref. V330013
- 25 UPPER SUPPLEMENT 20mm Ref. V330011
- 26 CAPS FOR CLAMPING ARM BOLTS (x2) Ref. V330003

(*) Installed on particular applications only.

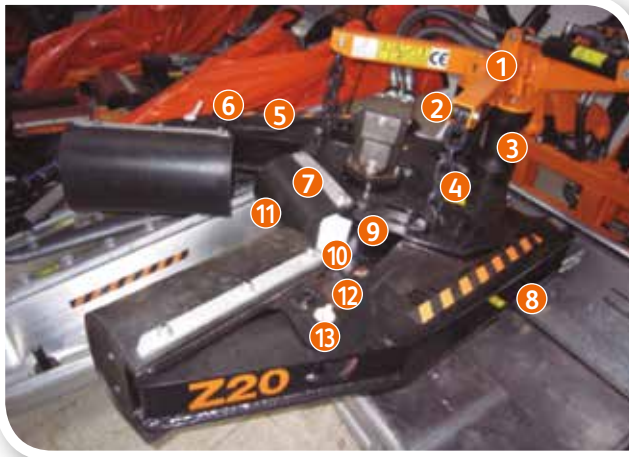


- 1 BOLT 230xØ35 (x2) Ref. V330103
NUTS (x2) Ref. V113104
- 2 TIGHTEN CLAMP CYLINDER (x2) Ref. V330100
- 3 BOLT 200xØ35 (x2) Ref. V330104
NUTS (x2) Ref. V113104
- 4 SEAL KIT (x2) Ref. V330102
- 5 HOSE 1 TRACT 1 (x2) Ref. V330311
- 6 HOSE 2 TRACT 1 (x2) Ref. V330321
- 7 DOUBLE CHECK VALVE Ref. V320330
(versions up to 2013)
From 2014 on, INDIVIDUAL CHECK VALVE INSERTED
IN CLAMPING CYLINDER
Ref. V330331
- 8 BOLT (x2) Ref. V330190
- 9 ADJUSTABLE LEFT SUPPORT Ref. V330181

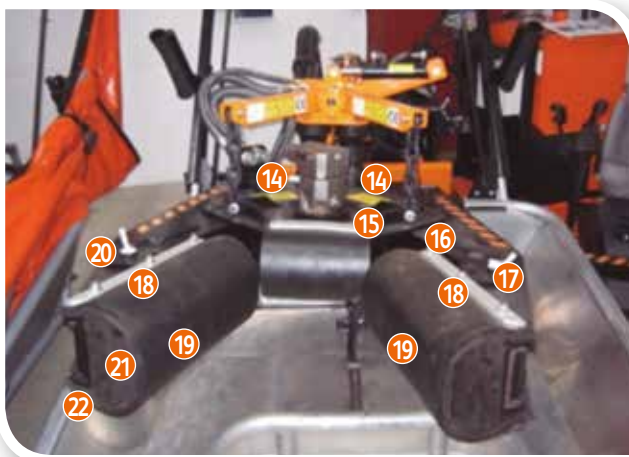


- 10 ADJUSTABLE RIGHT SUPPORT Ref. V330182

3.5. Machines equipped with Z20 vibration head



- 1 VIBRATION HEAD SUPPORT Ref. V121150
- 2 CAPS (x2) Ref. V111005
- 3 SILENT BLOCKS (x2) Ref. V111002
- 4 CHAIN (x2) Ref. V111003
- 5 COMPLETE VIBRATION HEAD Ref. V340000
- 6 COMPLETE RIGHT ARM Ref. V340110
- 7 RIGHT ARM FRAME Ref. V340111
- 8 LOG STOP FIXING PLATEN (x2) Ref. V330142
- 9 NYLON GUIDINGS (x2) Ref. V330009
- 10 PROTECTION COVER Ref. V340006
- 11 LOG STOP BLOCK (installed on particular applications only) Ref. V330171
- 12 LOG STOP FLAP Ref. V330180
- 13 ADJUSTABLE LEFT SUPPORT Ref. V340181
- 14 BOLT (x2) Ref. V330190



- 14 CLAMPING ARM BOLTS 280xØ40 (x2) Ref. V330004
- 15 NUTS (x2) Ref. V113104
- 16 CENTRAL BOX Ref. V340001
- 17 COMPLETE LEFT ARM Ref. V340120
- 18 LEFT ARM FRAME Ref. V340121
- 19 FLAPS FIXING PLATEN (x4) Ref. V330141
- 20 CLAMPING ARM OUTER FLAP (x2)
- Regular Composite Ref. V330152
- Soft Composite Ref. V330153
- Fabric Composite Ref. V330150
- 21 ADJUSTABLE RIGHT SUPPORT Ref. V340182
- 22 CLAMPING ARM BLOCK (x2)
- Regular Composite Ref. V330131
- Soft Composite Ref. V330132
- 23 CLAMPING ARM INNER FLAP (x2)
- Regular Composite Ref. V330160
- Soft Composite Ref. V330161



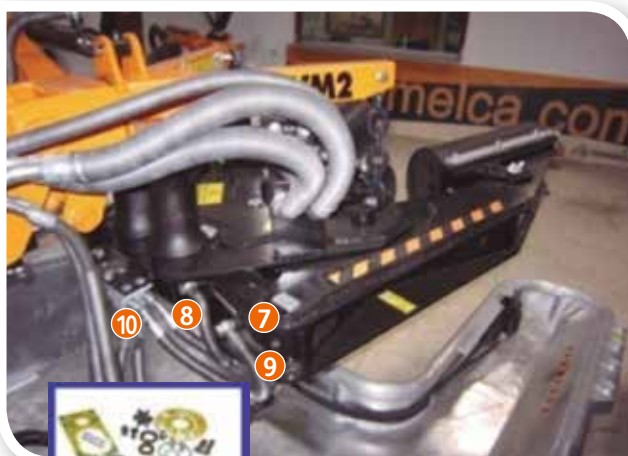
- 23 PROTECTION COVER Ref. V340006



- 1 COUNTERWEIGHT Ref. V330010
- 2 COUNTERWEIGHT SHAFT Ref. V330008
- 3 INTERMEDIATE SUPPLEMENT 10mm Ref. V340013
- 4 UPPER SUPPLEMENT 20mm Ref. V340011



- 5 BOLT 230xØ35 (x2) Ref. V330103
NUTS (x2) Ref. V113104
- 6 BOLT 200xØ35 (x2) Ref. V340104

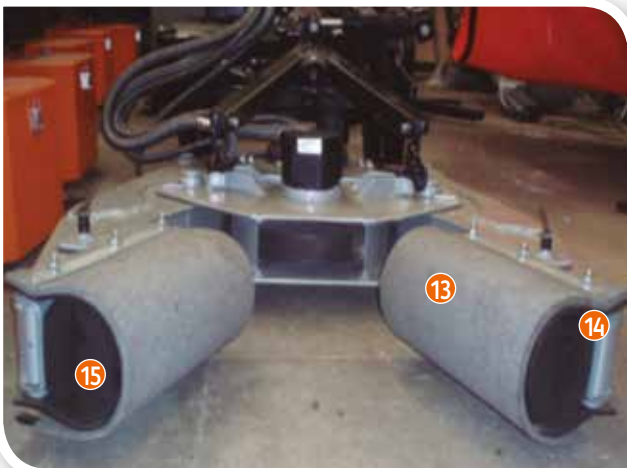


- 7 TIGHTEN CLAMP CYLINDER (x2) Ref. V340100
- 8 HOSE 1 TRACT 1 (x2) Ref. V340311
- 9 HOSE 2 TRACT 1 (x2) Ref. V340321
- 10 DOUBLE CHECK VALVE Ref. V320330
(versions up to 2013)
From 2014 on, INDIVIDUAL CHECK VALVE INSERTED
IN CLAMPING CYLINDER
Ref. V330331
- 11 SEAL KIT (x2) Ref. V340102

3.6. Machines equipped with Z20-2014 vibration head



- 1 VIBRATION HEAD SUPPORT Ref. V121150
- 2 CAPS (x2) Ref. V111005
- 3 SILENT BLOCKS (x2) Ref. V111002
- 4 CHAIN (x2) Ref. V111003
- COMPLETE VIBRATION HEAD Ref. V350000
- 5 COMPLETE RIGHT ARM Ref. V350110
- 6 RIGHT ARM FRAME Ref. V350111
- 7 CENTRAL BOX Ref. V35001
- 8 PROTECTION COVER Ref. V350006
- 9 NYLON GUIDINGS (x2) Ref. V330009
- 10 BOLT (x2) Ref. V330190
- 11 ADJUSTABLE LEFT SUPPORT Ref. V340181
- 12 FLAPS FIXING PLATEN (x4) Ref. V330141



- 13 CLAMPING ARM OUTER FLAP (x2)
Regular Composite Ref. V350152
Soft Composite Ref. V350153
Fabric Composite Ref. V350150
- 14 CLAMPING ARM INNER FLAP (x2)
Regular Composite Ref. V350160
Soft Composite Ref. V350161
- 15 CLAMPING ARM BLOCK (x2)
Regular Composite Ref. V350131
Soft Composite Ref. V350132



- 16 ADJUSTABLE RIGHT SUPPORT Ref. V340182
- 17 CLAMPING ARM BOLTS 280xØ50 (x2) Ref. V330005
TUERCA (x2) Ref. V113104
- 18 COMPLETE LEFT ARM Ref. V350120
- 19 LEFT ARM FRAME Ref. V350121
- 20 CAPS FOR CLAMPING ARM BOLTS (x2)
Ref. V330003

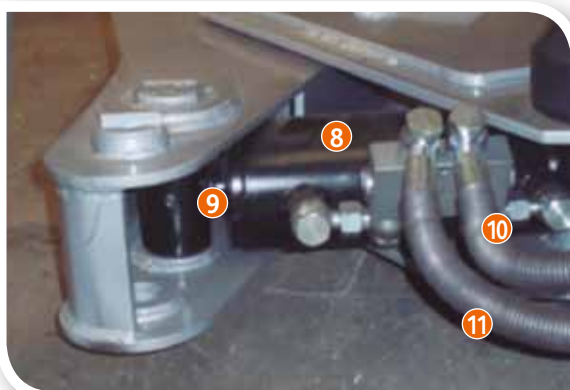




- 1 COUNTERWEIGHT Ref. V330010
- 2 COUNTERWEIGHT SHAFT Ref. V330008
- 3 COUNTERWEIGHT SHAFT (for vibration heads from 2014 on) Ref. V330014
- 4 INTERMEDIATE SUPPLEMENT 10mm Ref. V350013
- 5 UPPER SUPPLEMENT 20mm Ref. V350011



- 6 BOLT 230xØ35 (x2) Ref. V330103
- TUERCA (x2) Ref. V113104
- 7 BOLT 200xØ35 (x2) Ref. V330104



- 8 TIGHTEN CLAMP CYLINDER (x2) Ref. V340100
- 9 PISTON ROD (x2) Ref. V340101
- 10 HOSE 1 TRACT 1 (x2) Ref. V350311
- 11 HOSE 2 TRACT 1 (x2) Ref. V350321



- 12 INDIVIDUAL CHECK VALVE Ref. V330331
- 13 SEAL KIT (x2) Ref. V340102



LIDS AND BEARINGS FOR VIBRATION HEADS 2014 VERSION:**THICKNESS ASSEMBLY 50MM (B):**

- 1 UPPER LID Ref. V112041
- 2 CIRCLIP (x2) Ref. V112047
- 3 LOWER LID Ref. V112042
- 4 UPPER LID CAP Ref. V112043
- 5 LOWER LID CAP Ref. V112044
- 6 ROLLER BEARINGS (x2) Ref. V112045
- 7 SEAL (x2) Ref. V112046

AGROMELCA RECOMMENDS USING:**TO GREASE THE LIDS OF THE VIBRATION HEAD: SKF LGHB 2**

Available canning:

- | | |
|--------|-----------------|
| 400 g | Ref. LGHB 2/0.4 |
| 5 kg | Ref. LGHB 2/5 |
| 18 kg | Ref. LGHB 2/18 |
| 50 kg | Ref. LGHB 2/50 |
| 180 kg | Ref. LGHB 2/180 |



Hydraulic Oil Agromelca, Ref. 51524 – 3HVLP



**DAY BY DAY
WE IMPROVE
THE WORLD OF
COLLECTING**

**PLATFORM
MADE OF
ALUMINIUM**

www.agromelca.com

Pol. Industrial "Las Lagunas", P-A 2
44610 Calaceite - Teruel (Spain)
Tel. 978 851 283 - Fax 978 851 243

Pol. Industrial "La Estación", naves 31-32
44600 Alcañiz - Teruel (Spain)
Tel. / fax 978 831 846

info@agromelca.com