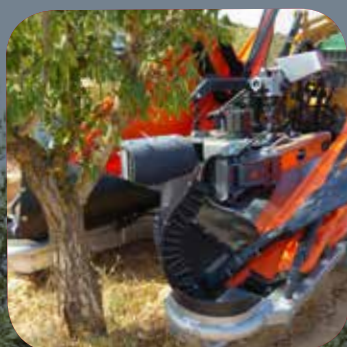
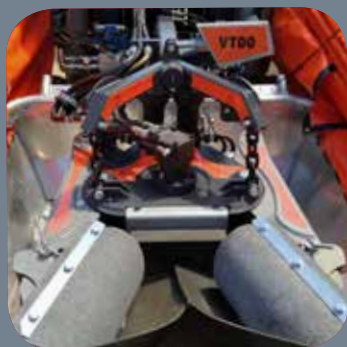




VM2 SPARE PARTS MANUAL

DAY BY DAY
WE IMPROVE
THE WORLD OF
COLLECTING

DRIED FRUIT AND
OLIVE COLLECTORS



XT10 PNA/PGA/DGA
PROGRESSIVE TOW-LINE,
TRV and ELLIPTICAL

2020

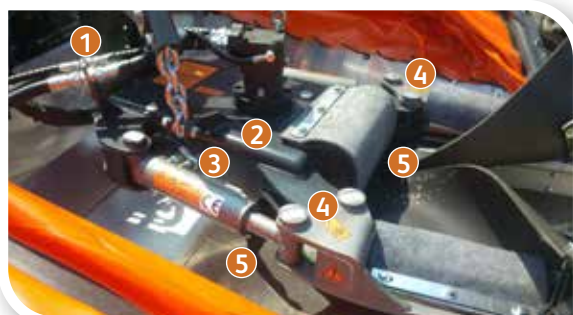
www.agromelca.com



1. Vibration equipment

1.1. Vibration head

1.1.1. MAIN BODY



COMPLETE VIBRATION HEAD Ref. V110000

- 1 SILENT BLOCKS (X2) Ref. V111002
- 2 CENTRAL BOX Ref. V111001
- 3 SIDE COVER Ref. V111006
- 4 BOLTS (X4) Ref. V113103
NUT (X4) Ref. V113104
- 5 BOLTS ARMS CAPS (X2)
Ref. V113105

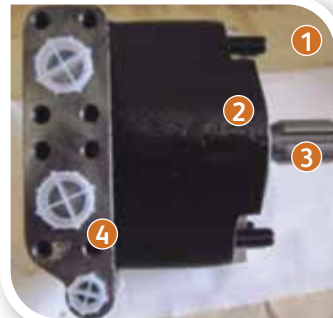


- 6 CAPS (x4) Ref. V111005
- 7 CHAINS (x2) Ref. V111003 (Indicate links)
- 8 CHAIN PROTECTOR (x2) Ref. V111007

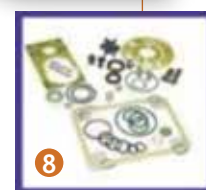
1.1.2. MOTOR-LIDS-COUNTERWEIGHT ASSEMBLY



- 1 MOTOR Ref. V112020
- 2 UPPER LID Ref. V112001



- 1 MOTOR Ref. V112020
- 2 OUTER HOUSING Ref. V112021
- 3 SHAFT Ref. V112022
- 4 MOTOR COVER Ref. V112027
- 5 CARTRIDGE Ref. V112023
- 6 REAR BEARING Ref. V112025
- 7 FRONT BEARING Ref. V112024
- 8 SEAL KIT Ref. V112026



REMARK: it is necessary to indicate BRAND, MODEL, DISPLACEMENT or MACHINE No. when ordering HYDRAULIC MOTOR SPARE PARTS.

**THICKNESS ASSEMBLY 30MM (A):**

- ❶ UPPER LID Ref. V112001
- ❷ CIRCLIP (x2) Ref. V112007
- ❸ LOWER LID Ref. V112002
- ❹ UPPER LID CAP Ref. V112003
- ❺ LOWER LID CAP Ref. V112004
- ❻ ROLLER BEARINGS (x2) Ref. V112005
- ❼ SEAL (x2) Ref. V112006



- ❶ COUNTERWEIGHT SHAFT Ref. V112008
- ❷ COUNTERWEIGHT Ref. V112010

THICKNESS ASSEMBLY 50MM (B):

- ❶ UPPER LID Ref. V112041
- ❷ CIRCLIP (x2) Ref. V112047
- ❸ LOWER LID Ref. V112042
- ❹ UPPER LID CAP Ref. V112043
- ❺ LOWER LID CAP Ref. V112044
- ❻ ROLLER BEARINGS (x2) Ref. V112045
- ❼ SEAL (x2) Ref. V112046

**COUNTERWEIGHT SUPPLEMENTS:**

- ❸ UPPER SUPPLEMENT 20 mm Ref. V112011
- UPPER SUPPLEMENT 10 mm Ref. V112014

**COUNTERWEIGHT SUPPLEMENTS:**

- ❺ INTERMEDIATE SUPPLEMENT Ref. V112013

1.1.3. HYDRAULIC CYLINDERS AND HOSES



- 1 HOSE 1 TRACT 1 MOTOR Ref. V113311
- 2 HOSE 2 TRACT 1 MOTOR Ref. V113321
- 3 MOTOR DRAIN HOSE TRACT 1 Ref. V113301
- 4 TIGHTEN CLAMP CYLIND. Ø95 (x2) Ref. V113100
- 4 TIGHTEN CLAMP CYLIND. Ø70 (x2) Ref. V113200
- 5 BOLT (x2) Ref. V113103
NUT (x2) Ref. V113104
- 6 SEAL KIT CYL. Ø95 (x2) Ref. V113102
- 6 SEAL KIT CYL. Ø70 (x2) Ref. V113202



TIGHTEN CLAMP CYLIND. Ø95 (x2) Ref. V113100

- 1 HOSE 1 TRACT 1 CYLINDER Ø95 (x2) Ref. V113111
- 2 HOSE 2 TRACT 1 CYLINDER Ø95 (x2) Ref. V113121

TIGHTEN CLAMP CYLIND. Ø70 (x2) Ref. V113200

- 1 HOSE 1 TRACT 1 CYLINDER Ø70 (x2) Ref. V113211
- 2 HOSE 2 TRACT 1 CYLINDER Ø70 (x2) Ref. V113221



TIGHTEN CLAMP CYLIND. Ø95 (x2) Ref. V113100

- 3 HOSE 1 TRACT 1 CYLINDER Ø95 (x2) Ref. V113111
- 4 HOSE 2 TRACT 1 CYLINDER Ø95 (x2) Ref. V113121

TIGHTEN CLAMP CYLIND. (x2) Ref. V113200

- 3 HOSE 1 TRACT 1 CYLINDER Ø70 (x2) Ref. V113211
- 4 HOSE 2 TRACT 1 CYLINDER Ø70 (x2) Ref. V113221

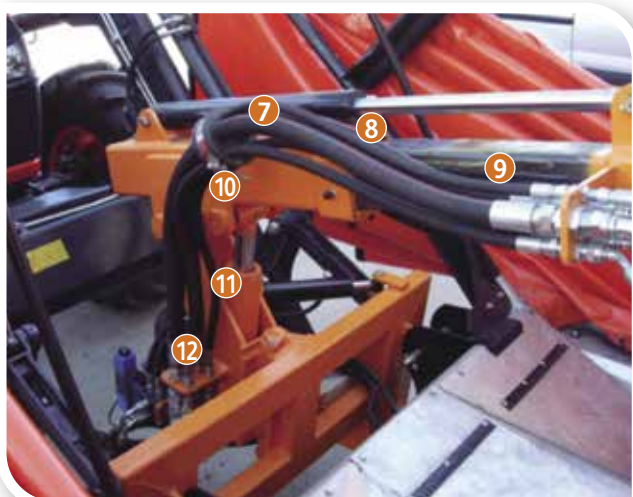
NOTE: it is necessary to indicate VIBRATION HEAD MODEL or MACHINE No. when ordering spare MOTOR HOSES.



- 1 HOSE FLANGE (x3) Ref. V113001
- 2 HOSE 1 TRACT 2 MOTOR Ref. V113312
- 3 HOSE 2 TRACT 2 MOTOR Ref. V113322
- 4 MOTOR DRAIN HOSE TRACT 2 Ref. V113302

TIGHTEN CLAMP CYLIND. Ø95 (x2) Ref. V113100
TIGHTEN CLAMP CYLIND. Ø70 (x2) Ref. V113200

- 5 HOSE 1 TRACT 2 Ref. V113116
- 6 HOSE 2 TRACT 2 Ref. V113126



- 7 HOSE 1 TRACT 3 MOTOR Ref. V113313
- 8 HOSE 2 TRACT 3 MOTOR Ref. V113323
- 9 MOTOR DRAIN HOSE TRACT 3 Ref. V113303
- 10 HOSE FLANGE (x3) Ref. V113001

TIGHTEN CLAMP CYLIND. Ø95 (x2) Ref. V113100
TIGHTEN CLAMP CYLIND. Ø70 (x2) Ref. V113200

- 11 HOSE 1 TRACT 3 Ref. V113113
- 12 HOSE 2 TRACT 3 Ref. V113123



TIGHTEN CLAMP CYLIND. Ø95 (x2) Ref. V113100
TIGHTEN CLAMP CYLIND. Ø70 (x2) Ref. V113200

- 13 HOSE 1 TRACT 4 Ref. V113114
- 14 HOSE 2 TRACT 4 Ref. V113124
- 15 HOSE 1 TRACT 4 MOTOR Ref. V113314
- 16 HOSE 2 TRACT 4 MOTOR Ref. V113324
- 17 MOTOR DRAIN HOSE TRACT 4 Ref. V113304

NOTE: it is necessary to indicate VIBRATION HEAD MODEL or MACHINE No. when ordering spare MOTOR HOSES.

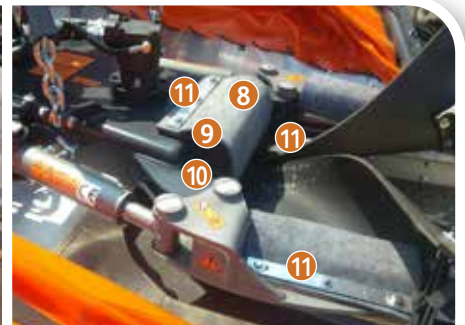
1.1.4. CLAMPING ARMS ASSEMBLY

1.1.4.1. REGULAR TREE CLAMPING ARMS ASSEMBLY Ref. 114100



- | | |
|--|---|
| <ul style="list-style-type: none"> 1 COMPLETE RIGHT ARM Ref. V114110 2 RIGHT ARM FRAME Ref. V114111 3 COMPLETE LEFT ARM Ref. V114120 4 LEFT ARM FRAME Ref. V114121 5 CLAMPING ARM OUTER FLAP (x2)
Fabric Composite Ref. V114150
Medium Composite Ref. V114152
Soft Composite Ref. V114153 6 CLAMPING ARM INNER FLAP (x2)
Medium Composite Ref. V114162
Soft Composite Ref. V114163 | <ul style="list-style-type: none"> 7 LOG STOP OUTER FLAP
Fabric Composite Ref. V114180
Medium Composite Ref. V114182
Soft Composite Ref. V114183 8 LOG STOP INNER FLAP
Medium Composite Ref. V114192 9 LOG STOP BLOCK
Regular Composite Ref. V114171
Soft Composite Ref. V114172 10 LOG STOP BLOCK FIXING PLATEN (x2) Ref. V114142 11 ARM FLAPS FIXING PLATEN (x4) Ref. V114141 12 CLAMPING ARM BLOCK (x2)
Regular Composite Ref. V114131
Soft Composite Ref. V114132 |
|--|---|

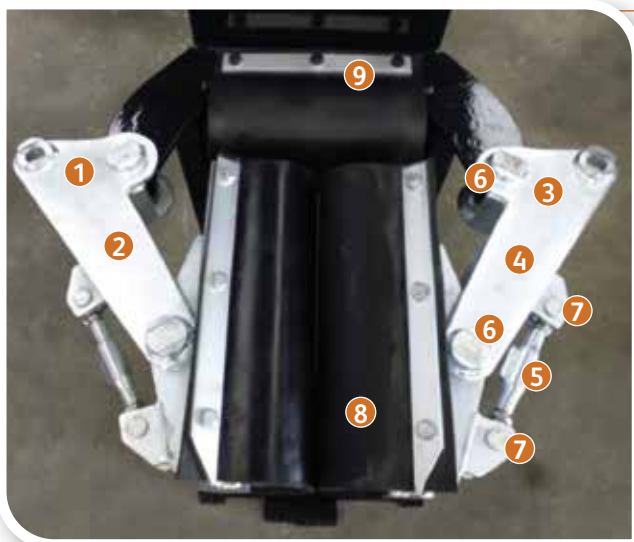
1.1.4.2. YOUNG TREE CLAMPING ARMS ASSEMBLY Ref. 114200



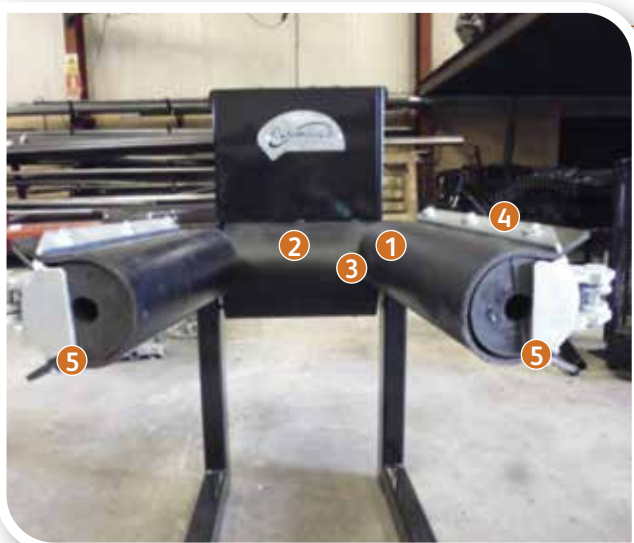
- | | |
|---|---|
| <ul style="list-style-type: none"> 1 COMPLETE RIGHT ARM Ref. V114210 2 RIGHT ARM FRAME Ref. V114211 3 COMPLETE LEFT ARM Ref. V114220 4 LEFT ARM FRAME Ref. V114221 5 CLAMPING ARM OUTER FLAP (x2)
Fabric Composite Ref. V114251 6 CLAMPING ARM INNER FLAP (x2)
Soft Composite Ref. V114263
Medium Composite Ref. V114262
Caramel Composite Ref. V114264 | <ul style="list-style-type: none"> 7 CLAMPING ARM BLOCK (x2)
Soft Composite Ref. V114232 8 LOG STOP OUTER FLAP
Fabric Composite Ref. V114180
Soft Composite Ref. V114183 9 LOG STOP INNER FLAP
Regular Composite Ref. V114192
Soft Composite Ref. V114193 10 LOG STOP BLOCK
Regular Composite Ref. V114171
Soft Composite Ref. V114172 11 FLAPS FIXING PLATTEN (x6) Ref. V114142 |
|---|---|

REMARK: it is necessary to indicate MODEL or MACHINE No. when ordering CLAMPING ARM SPARE PARTS.

1.1.4.3. SELF-ADAPTABLE ARM ASSEMBLY



- 1 COMPLETE RIGHT ARM Ref. V114230
- 2 RIGHT ARM FRAME Ref. V114231
- 3 COMPLETE LEFT ARM Ref. V114240
- 4 LEFT ARM FRAME Ref. V114241
- 5 TENSOR Ref. V114350
- 6 BOLT (x2) Ref. V121303
- 7 BOLT (x2) Ref. V121304
- 8 CLAMPING ARM OUTER/ INNER FLAP (x2)
Medium Composite Ref. V114162
Soft Composite Ref. V114163
- 9 LOG STOP BLOCK FIXING PLATEN (x2)
Ref. V114142



- 1 LOG STOP OUTER FLAP
Fabric Composite Ref. V114180
Medium Composite Ref. V114182
Soft Composite Ref. V114183
- 2 LOG STOP INNER FLAP
Medium Composite Ref. V114192
Soft Composite Ref. V114193
- 3 LOG STOP BLOCK
Regular Composite Ref. V114171
Soft Composite Ref. V114172
- 4 ARM FLAPS FIXING PLATEN (x4) Ref. V114141
- 5 CLAMPING ARM BLOCK (x2)
Soft Composite Ref. V114332



- 1 LOG STOP FLAP ANCIENT TRUNK
Regular Composite Ref. VM05
- 2 LOG STOP BLOCK ANCIENT TRUNK
Regular Composite Ref. VM07

1.2. Vibration equipment main frame

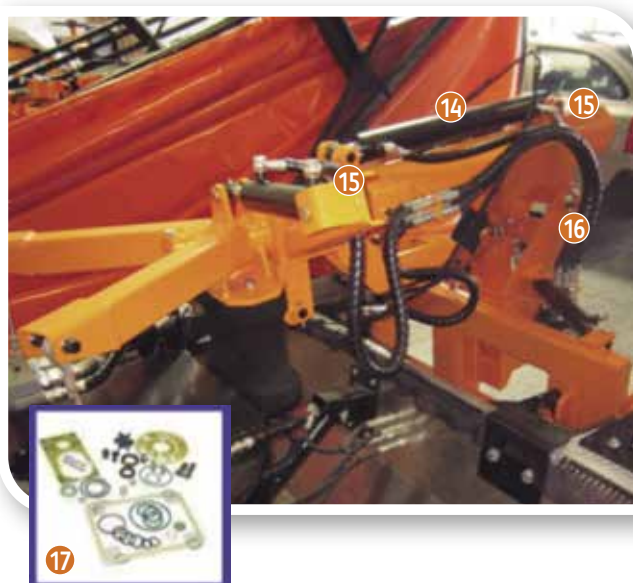
1.2.1. JOINTS AND MOVEMENTS



- 1 EXTENSIBLE ARM 60cm Ref. V121161
- 1 EXTENSIBLE ARM 75cm Ref. V121160
- 2 TELESCOPE SUPPORT Ref. V121132
- 3 MACHINE ELEVATION CYLINDER Ref. V121300
- 4 MACHINE SPINNING SUPPORT Ref. V121120
- 5 HINGE BOLT Ref. V121111
- 6 MACHINE SPINNING CYLINDER Ref. V121200
- 7 MAIN FRAME BASE Ref. V121110



- MACHINE ELEVATION CYLINDER** Ref. V121300
- 8 BOLT (x2) Ref. V121303
NUT (x2) Ref. V113104
 - 9 SEAL KIT Ref. V121302
 - 10 MACHINE SPINNING CYLINDER Ref. V121200
 - 11 BOLT (x2) Ref. V121203
 - 12 SEAL KIT Ref. V121202



- 13 TELESCOPE CYLINDER 1 Ref. V121400
(for VM2 manufactured from 2015
Telescopic Cylinder 1 Ref. V121410)
- 14 BOLT (x2) Ref. V121403
- 15 TELESCOPE SUPPORT BOLT Ref. V121131
NUT Ref. V113104
- 16 SEAL KIT Ref. V121402



- ① VIBRATION EQUIPMENT SUPPORT Ref. V121150
- ② CLAMP LEVELING BOLT Ref. V121141
- ③ CLAMP LEVELING AND FINAL EXTENSIBLE SUPPORT Ref. V121140
- ④ CLAMP LEVELING CYLINDER Ref. V121600



CLAMP LEVELING CYLINDER Ref. V121600

- ⑤ BOLT (x2) Ref. V121603
- ⑥ SEAL KIT Ref. V121602

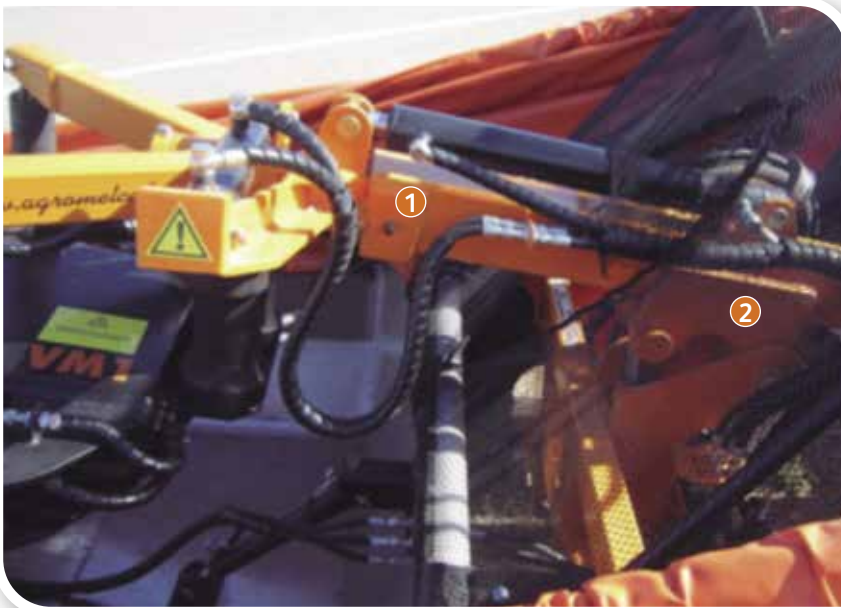


- ① CLAMP SPINNING CYLINDER Ref. V121700
- ② BOLT (x2) Ref. 121703
- ③ SEAL KIT Ref. V121702



- ④ MAIN FRAME BOLTS (x2) Ref. V121113
- ⑤ MAIN FRAME BOLTS (x8) Ref. V121112

NYLON GUIDES FOR EXTENSIBLE ARM AND CLAMP SPINNING



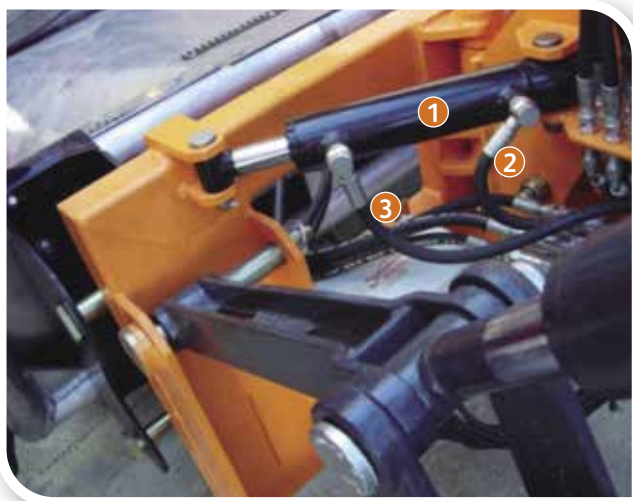
- ① TELESCOPE SUPPORT FRONT GUIDES (x3) Ref. V121191
- ② REAR GUIDE Ref. V121192



- ③ CLAMP SPINNING CYLINDRICAL GUIDES (x2) Ref. V121175



1.2.2. VIBRATION EQUIPMENT FRAME HYDRAULIC HOSES



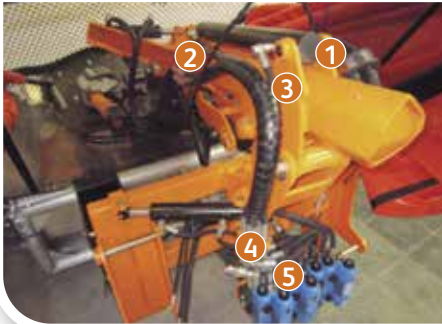
- ① MACHINE SPINNING CYLINDER Ref. V121200
- ② HOSE 1 TRACT 1 Ref. V121211
- ③ HOSE 2 TRACT 1 Ref. V121221



- ④ MACHINE ELEVATION CYLINDER Ref. V121300
- ⑤ HOSE 1 TRACT 1 Ref. V121311
- ⑥ HOSE 2 TRACT 1 Ref. V121321



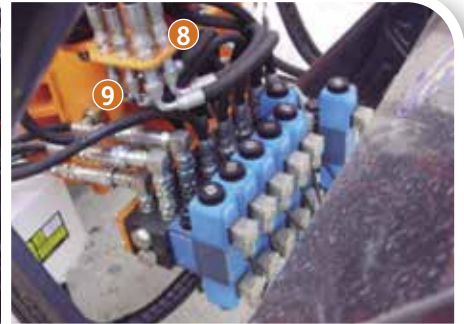
- ⑦ MACHINE ELEVATION CYLINDER Ref. V121300
- ⑧ HOSE 1 TRACT 1 Ref. V121311
- ⑨ HOSE 2 TRACT 1 Ref. V121321



- 1 TELESCOPE CYLINDER No. 1 Ref. V121400
- 2 HOSE 1 TRACT 1 Ref. V121412
- 3 HOSE 2 TRACT 1 Ref. V121422
- 4 HOSE 1 TRACT 2 Ref. V121413
- 5 HOSE 2 TRACT 2 Ref. V121423



- CLAMP LEVELING CYLINDER Ref. V121600
- 6 HOSE 1 TRACT 1 Ref. V121612
- 7 HOSE 2 TRACT 1 Ref. V121622
- 8 HOSE 1 TRACT 2 Ref. V121613
- 9 HOSE 2 TRACT 2 Ref. V121623



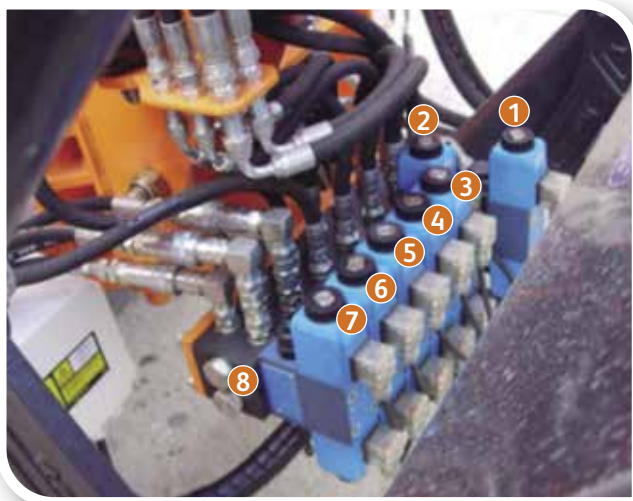
- CLAMP SPINNING CYLINDER Ref. V121700
- 1 HOSE 1 TRACT 1 Ref. V121715
- 2 HOSE 2 TRACT 1 Ref. V121725
- 3 HOSE 1 TRACT 2 Ref. V121716
- 4 HOSE 2 TRACT 2 Ref. V121726



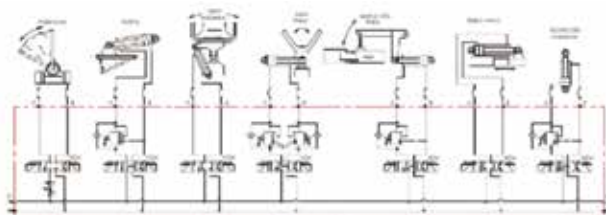
- CLAMP SPINNING CYLINDER Ref. V121700
- 5 HOSE 1 TRACT 3 Ref. V121713
- 6 HOSE 2 TRACT 3 Ref. V121723



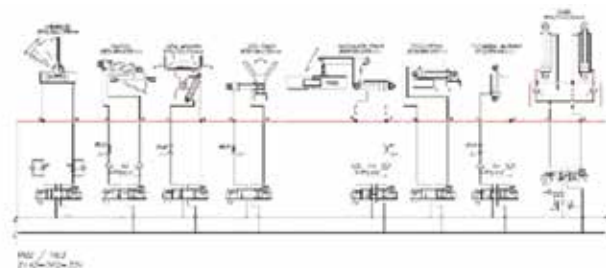
1.2.3. MAIN FRAME HYDRAULIC MANIFOLD



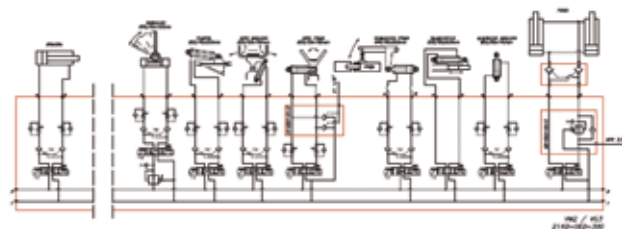
- 1 E.V. MACHINE ELEVATION Ref. V123112
- 2 E.V. TELESOPES No. 1 & 2 Ref. V123111
- 3 E.V. CLAMP LEVELING Ref. V123113
- 4 E.V. CLAMP SPINNING Ref. V123114
- 5 E.V. MACHINE SPINNING Ref. V123115
- 6 E.V. OPEN/CLOSE DOOR Ref. V123116
- 7 E.V. OPEN/CLOSE UMBRELLA Ref. V123117
- 8 E.V. OPEN/CLOSE CLAMP Ref. V123128
- 9 MAIN FRAME HYDRAULIC MANIFOLD:
Prog. Towline / TRV Versions Ref. V123110
Elliptical 2012 Version Ref. V123120
TRV 2013 Version Ref. V123130
Elliptical 2013 Version Ref. V123140



Progressive Towline / TRV Version Ref. V123110



Elliptical 2012 Version Ref. V123120



TRV-2013 Version Ref. V123130

REMARK: it is necessary to indicate VERSION (PROGRESSIVE TOWLINE, TRV or ELLIPTICAL) or MACHINE No. when ordering HYDRAULIC MANIFOLD SPARE PARTS.

1.3. Hydraulic power unit / oil tank

1.3.1. PROGRESSIVE TOWLINE HYDRAULIC POWER UNIT



COMPLETE HYDR. POWER UNIT Ref. V130100

- 1 OIL TANK Ref. V130001
- 2 FRAME Ref. V130002
- 3 BRACES (x2) Ref. V130003
- 4 FENDER Ref. V130004

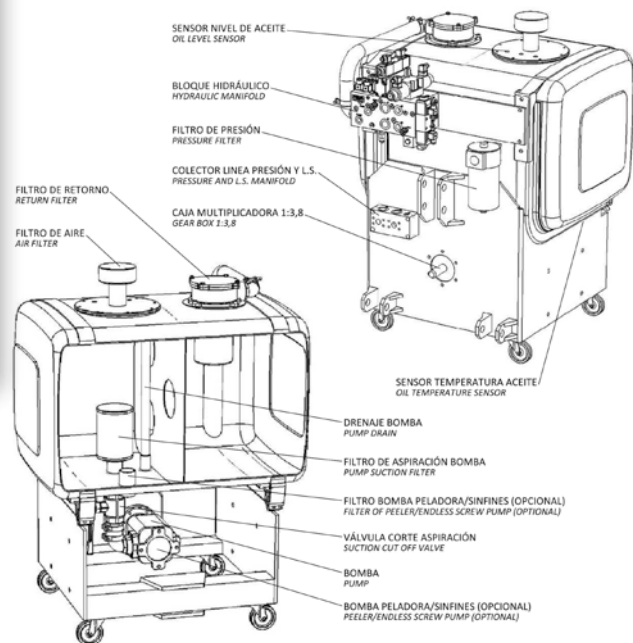


- 1 VANE PUMP Ref. V130030
- 2 OUTER HOUSING Ref. V130031
- 3 SHAFT Ref. V130032



- 4 CARTRIDGE Ref. V130033
- 5 BEARING Ref. V130034
- 6 SEAL KIT Ref. V130035
- 7 VARIABLE DISPLACEMENT PUMP Ref. V130040

REMARK: it is necessary to indicate BRAND, MODEL and DISPLACEMENT or MACHINE No. when ordering PUMP SPARE PARTS.



- OIL LEVEL SENSOR Ref. V130010
- HYDRAULIC MANIFOLD Ref. V130020 (see next page for exploded components)
- PRESSURE FILTER Ref. V130011
- PRESSURE AND L.S. MANIFOLD Ref. V130012
- GEAR BOX Ref. V130013
- RETURN FILTER Ref. V130014
- FILTER CARTRIDGE RETURN Ref. V130009
- AIR FILTER Ref. V130015
- PUMP DRAIN Ref. V130016
- PUMP ASPIRATION FILTER Ref. V130017
- PEELER PUMP FILTER Ref. V130018
- ASPIRATION CUT OFF VALVE Ref. V130019
- VANE PUMP Ref. V130030
- VARIABLE DISPLACEMENT PUMP Ref. V130040
- PEELER PUMP Ref. V130050 (Optional)

1.3.2. TRV (TURBO VIBRATION) HYDRAULIC POWER UNIT (VERSIONS UP TO 2012)

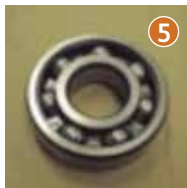


COMPLETE HYDR. POWER UNIT Ref. V130200

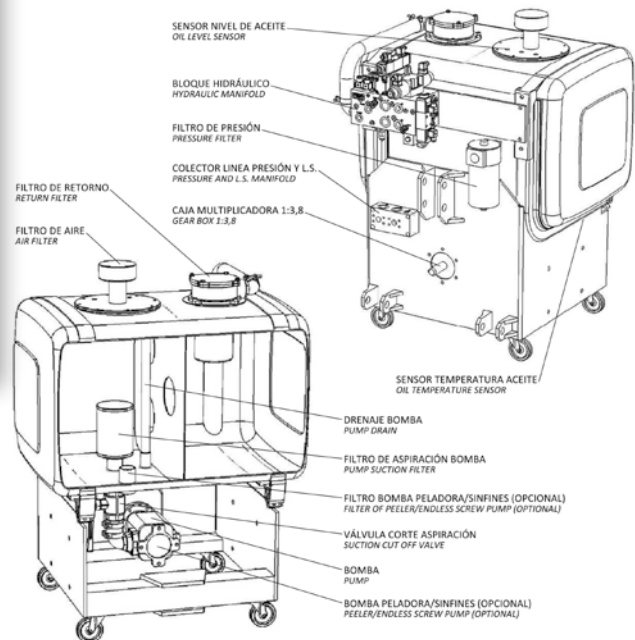
- 1 OIL TANK Ref. V130001
- 2 BRACES Ref. V130002
- 3 FENDER (x2) Ref. V130003
- 4 FRAME Ref. V130004



- 1 VANE PUMP Ref. V130030
- 2 OUTER HOUSING Ref. V130031
- 3 SHAFT Ref. V130032

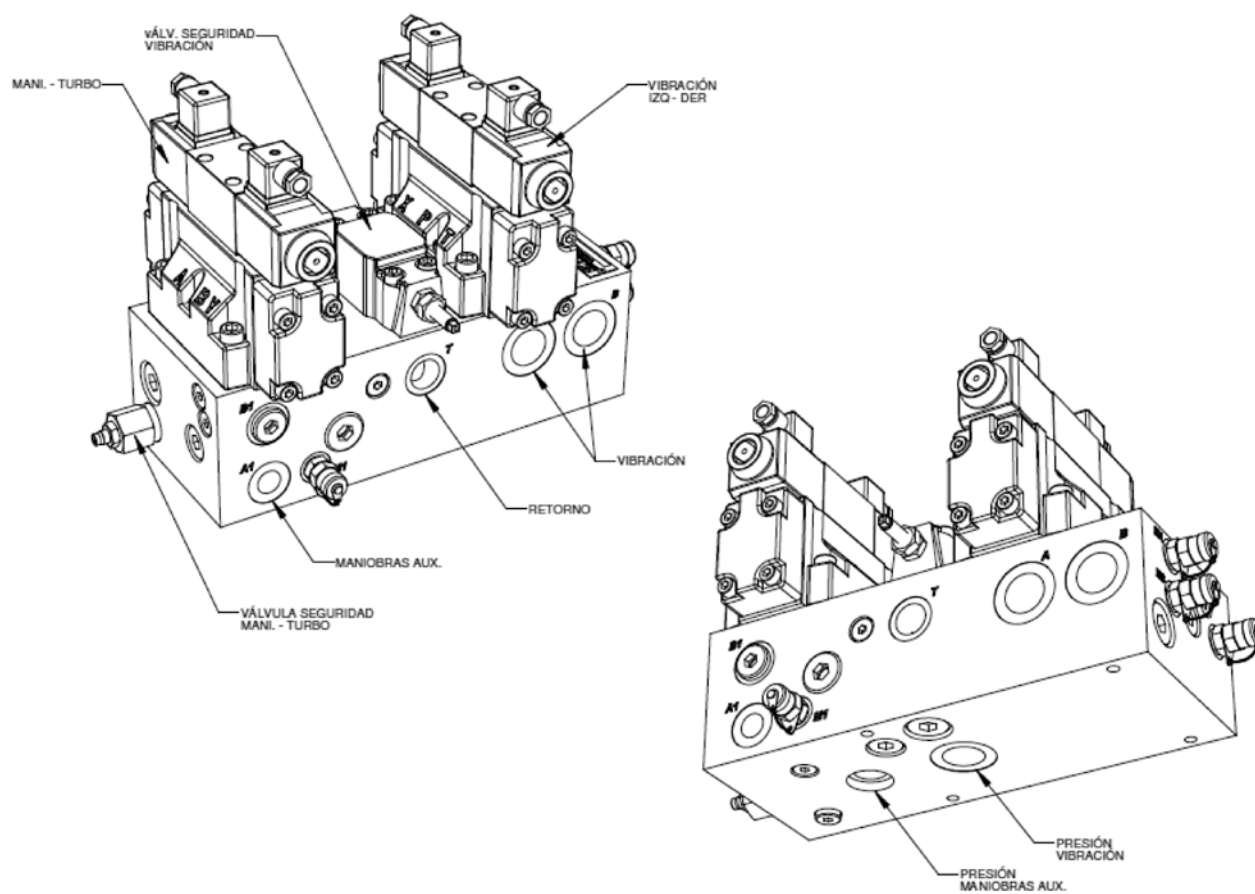


- 4 CARTRIDGE Ref. V130033
- 5 BEARING Ref. V130034
- 6 SEAL KIT Ref. V130035



- OIL LEVEL SENSOR Ref. V130010
- HYDRAULIC MANIFOLD Ref. V130021
- PRESSURE FILTER Ref. V130011
- PRESSURE AND L.S. MANIFOLD Ref. V130012
- GEAR BOX Ref. V130013
- RETURN FILTER Ref. V130014
- FILTER CARTRIDGE RETURN Ref. V130009
- AIR FILTER Ref. V130015
- PUMP DRAIN Ref. V130016
- PUMP ASPIRATION FILTER Ref. V130017
- PEELER PUMP FILTER Ref. V130018
- ASPIRATION CUT OFF VALVE Ref. V130019
- VANE PUMP Ref. V130030
- PEELER PUMP Ref. V130050 (Optional)

REMARK: it is necessary to indicate BRAND, MODEL and DISPLACEMENT or MACHINE No. when ordering PUMP SPARE PARTS.



1.3.3. ELLIPTICAL VERSION HYDRAULIC POWER UNIT

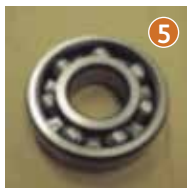


COMPLETE HYDR. POWER UNIT Ref. V130300

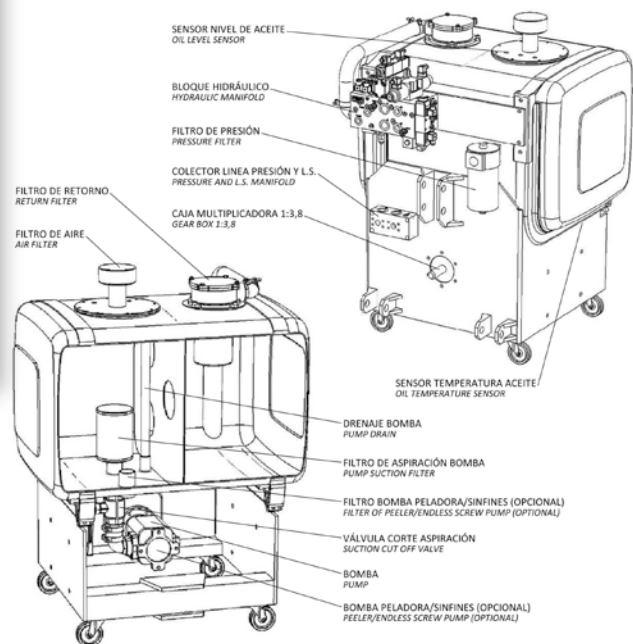
- 1 OIL TANK Ref. V130001
- 2 FRAME Ref. V130002
- 3 BRACES (x2) Ref. V130003
- 4 FENDER Ref. V130004



- 1 VANE PUMP Ref. V130030
- 2 OUTER HOUSING Ref. V130031
- 3 SHAFT Ref. V130032



- 4 CARTRIDGE Ref. V130033
- 5 BEARING Ref. V130034
- 6 SEAL KIT Ref. V130035
- 7 VARIABLE DISPLACEMENT PUMP Ref. V130040



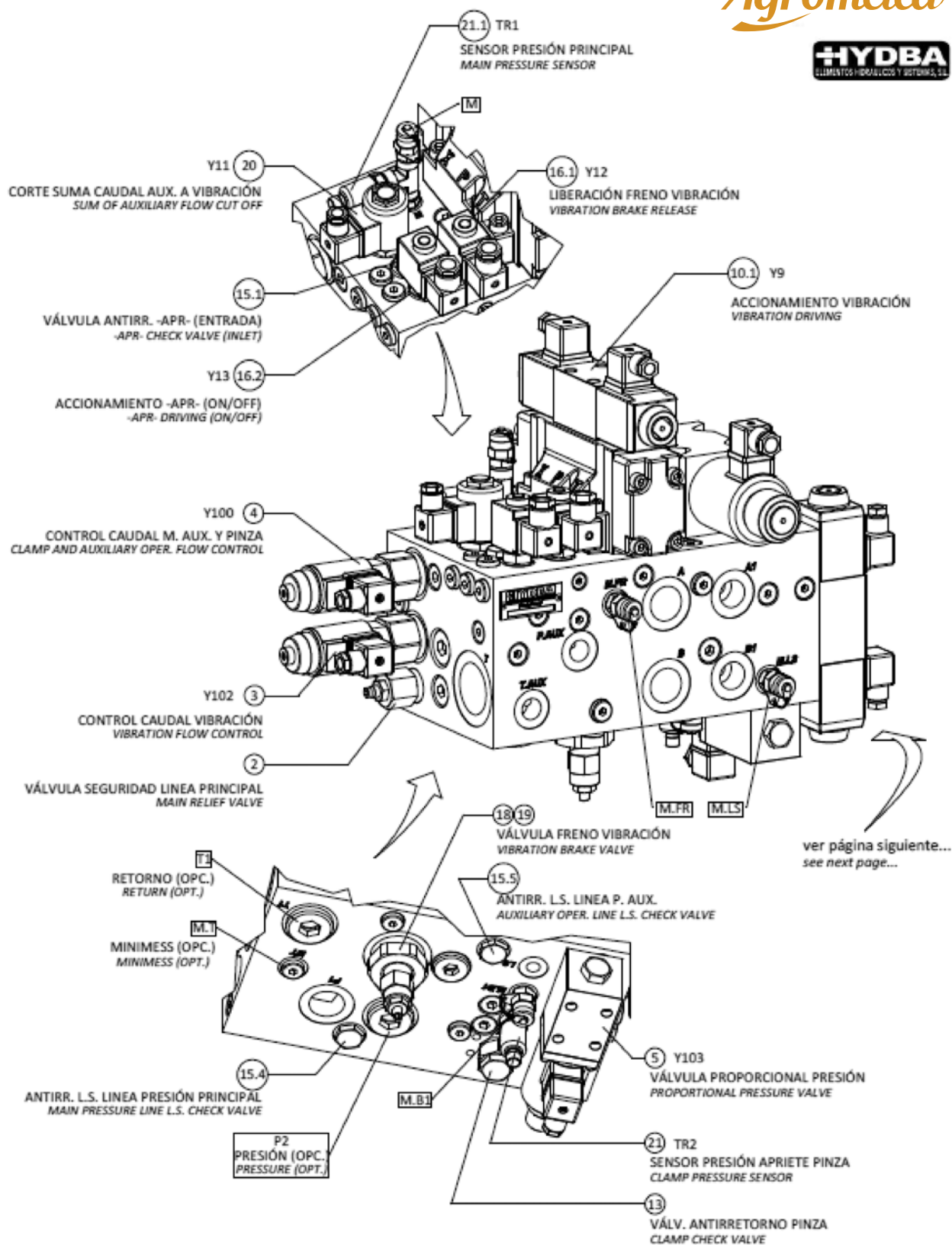
- OIL LEVEL SENSOR Ref. V130010
- HYDRAULIC MANIFOLD Ref. V130022
- PRESSURE FILTER Ref. V130011
- PRESSURE AND L.S. MANIFOLD Ref. V130012
- GEAR BOX Ref. V130013
- RETURN FILTER Ref. V130014
- FILTER CARTRIDGE RETURN Ref. V130009
- AIR FILTER Ref. V130015
- PUMP DRAIN Ref. V130016
- PUMP ASPIRATION FILTER Ref. V130017
- PEELER PUMP FILTER Ref. V130018
- ASPIRATION CUT OFF VALVE Ref. V130019
- VANE PUMP Ref. V130030
- VARIABLE DISPLACEMENT PUMP Ref. V130040
- PEELER PUMP Ref. V130050 (Optional)

REMARK: it is necessary to indicate BRAND, MODEL and DISPLACEMENT or MACHINE No. when ordering PUMP SPARE PARTS.

IDENTIFICATION

Agromelca

HYDBA
ELEMENTOS HIDRÁULICOS Y SISTEMAS, S.L.

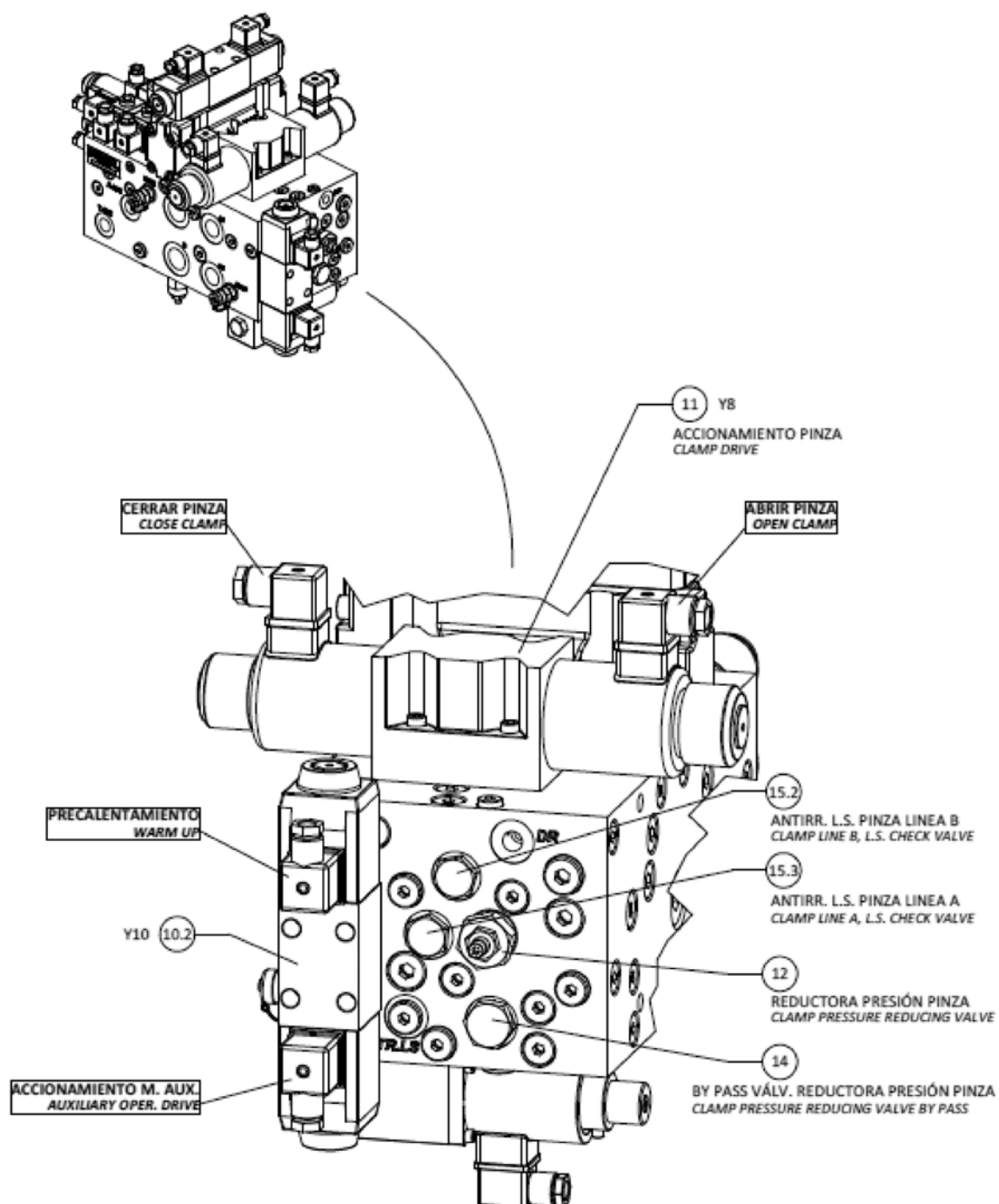


IDENTIFICATION

Agromelca

HYDBA
ELEMENTOS HIDRÁULICOS Y SISTEMAS, S.L.

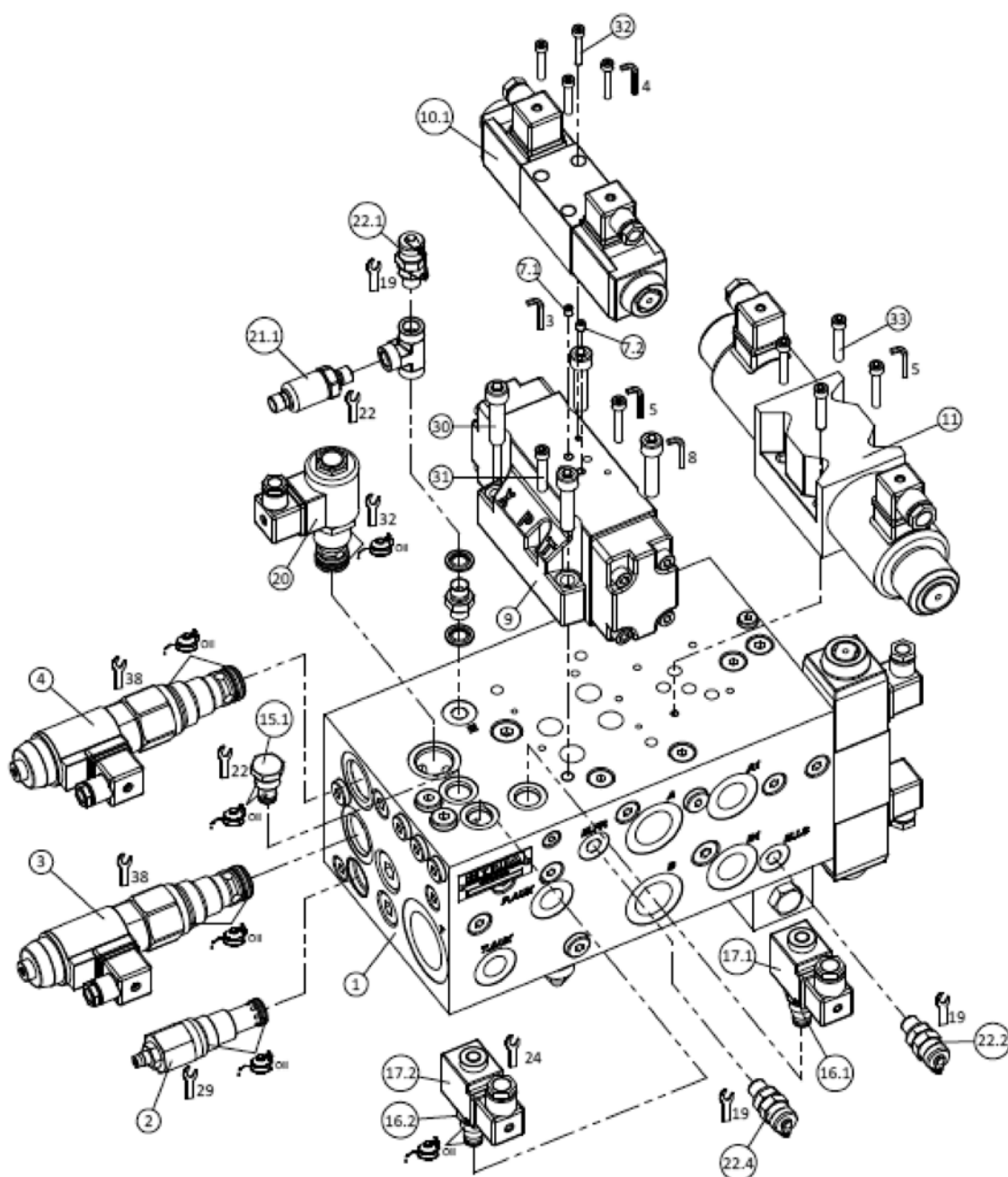
DAY BY DAY WE IMPROVE THE WORLD OF COLLECTING



DISASSEMBLY

Agromelca

HYDBA
ELEMENTOS HIDRÁULICOS Y SISTEMAS, S.L.

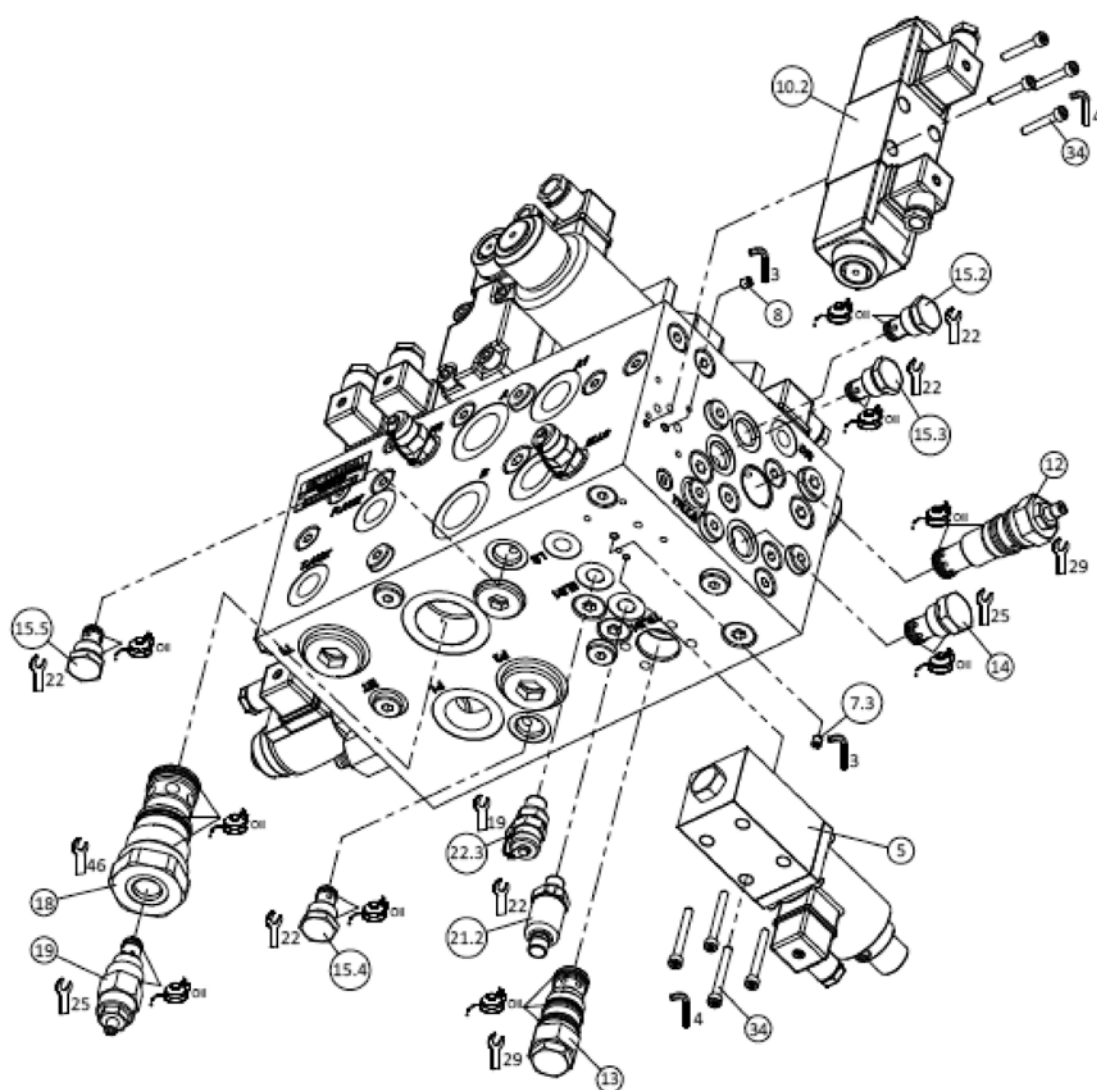


DISASSEMBLY

Agromelca

HYDBA
ELEMENTOS HIDRÁULICOS Y SISTEMAS, S.L.

DAY BY DAY WE IMPROVE THE WORLD OF COLLECTING



PARTS LIST




BK-2142-029-001

POS. ITEM	REFERENCIA PART NO.	CANT. QTY.	DESCRIPCIÓN DESCRIPTION	FABRICANTE MANUFACTURER
1	HY-2142-029-001	1	HYDRAULIC MANIFOLD BLOQUE HIDRAULICO	HYDBA
2	1AR100-P-20-S	1	CARTRIDGE RELIEF VALVE VÁLVULA SEGURIDAD CARTUCHO	INTEGRATED HYDRAULICS
3	EPV16-A-16-0-0-NF-120-S-U-13	1	PROPORTIONAL FLOW CONTROL CARTRIDGE VALVE VÁLVULA PROPORCIONAL DE CAUDAL CARTUCHO	INTEGRATED HYDRAULICS
4	EPV16-A-10-0-0-NF-120-S-U-13	1	PROPORTIONAL FLOW CONTROL CARTRIDGE VALVE VÁLVULA PROPORCIONAL DE CAUDAL CARTUCHO	INTEGRATED HYDRAULICS
5	EDG-01H	1	PROPORTIONALPRESSURE CONTROL CETOP 3 VÁLVULA PROPORCIONAL DE PRESIÓN CETOP 3	DOFLUID-HYDBA
6	M6 Ø1	1	ORIFICE M6 CHICLÉ M6	HYDBA
7	M6 Ø0.8	2	ORIFICE M6 CHICLÉ M6	HYDBA
8	M6 Ø3	1	ORIFICE M6 CHICLÉ M6	HYDBA
9	SWH-G04- B2,B6 -T-56B	1	PILOT OPER. DIRECTIONAL CTRL. VALVE CETOP 7 DISTRIBUIDOR PILOTADO CETOP 7	HYDBA
10	DG4V-3-2C-M-U-G7-60	2	SOLENOID OPER. DIRECTIONAL CTRL. VALVE CETOP 3 ELECTROVÁLVULA DIRECCIONAL CETOP 3	EATON-VICKERS
11	DG4V-5-6CJ-M-U-G6-20	1	SOLENOID OPER. DIRECTIONAL CTRL. VALVE CETOP 5 ELECTROVÁLVULA DIRECCIONAL CETOP 5	EATON-VICKERS
12	1PA100-P-20-S	1	PRESSURE REDUCING VALVE VÁLVULA REDUCTORA DE PRESIÓN CARTUCHO	INTEGRATED HYDRAULICS
13	4SK90	1	CARTRIDGE PILOT OPER. CHECK VALVE VÁLVULA ANTIRRETORNO PILOT. CARTUCHO	INTEGRATED HYDRAULICS
14	3CA50-1.5-S	1	CARTRIDGE CHECK VALVE VÁLVULA ANTIRRETORNO CARTUCHO	INTEGRATED HYDRAULICS
15	3CA30-3.0-S	5	CARTRIDGE CHECK VALVE VÁLVULA ANTIRRETORNO CARTUCHO	INTEGRATED HYDRAULICS
16	CRP-04-18-NC-A-S	2	2 WAY SOLENOID CARTRIDGE VALVE ELECTROVÁLVULA 2 VÍAS CARTUCHO	HYDRAPP
17	EC30D012CC	2	COIL BOBINA	HYDRAPP
18	LEV402-2N	1	CARTRIDGE RELIEF VALVE VÁLVULA SEGURIDAD CARTUCHO	INTEGRATED HYDRAULICS
19	1DR2-P-40S	1	CARTRIDGE RELIEF VALVE VÁLVULA SEGURIDAD CARTUCHO	INTEGRATED HYDRAULICS
20	SBV11-12C-0-12D-G-H-00	1	2 WAY SOLENOID CARTRIDGE VALVE ELECTROVÁLVULA 2 VÍAS CARTUCHO	INTEGRATED HYDRAULICS
21	PT3551	2	PRESSURE SENSOR SENSOR DE PRESIÓN	IFM ELECTRONICS
22	RM231604	4	MINIMESS 1/4"BSPP	HYDBA
23	DIN 43650	4	ELECTRICAL CONNECTOR CONECTOR ELECTRICO	
24	DIN 3852-E 1/8"BSPP	3	SCREW PLUG TAPÓN	
25	DIN 3852-E 1/4"BSPP	43	SCREW PLUG TAPÓN	
26	DIN 3852-E 3/8"BSPP	13	SCREW PLUG TAPÓN	
27	DIN 3852-E 1/2"BSPP	4	SCREW PLUG TAPÓN	
28	DIN 3852-E 3/4"BSPP	3	SCREW PLUG TAPÓN	
29	DIN 3852-E 1"BSPP	2	SCREW PLUG TAPÓN	
30	DIN 912 M10x45	4	SOCKET CAP SCREW TORNILLO ALLEN	
31	DIN 912 M6x40	6	SOCKET CAP SCREW TORNILLO ALLEN	
32	DIN 912 M5x30	8	SOCKET CAP SCREW TORNILLO ALLEN	
33	DIN 912 M5x45	4	SOCKET CAP SCREW TORNILLO ALLEN	

1.3.4. HYDRAULIC POWER UNIT TRV 2013/2015 VERSION



COMPLETE HYDR. POWER UNIT Ref. V131200

- 1 COMPLETE HEAT EXCHANGER ASSEMBLY
Ref. V131030
 - Heat Exchanger Panel Ref. V131031
 - Fan Ref. V131032
 - Thermostat Ref. V131033
- 2 FILLING CAP Ref. V131003
- 3 TANK Ref. V131001
- 4 FENDER Ref. V131004



- 5 RETURN FILTER Ref. V130014
- 6 FILTER CARTRIDGE RETURN Ref. V130009
- 7 OIL LEVEL Ref. V130010
- 8 RETURN HOSE Ref. V131005
- 9 HYDRAULIC MANIFOLD Ref. V130023
- 10 FRAME Ref. V131002



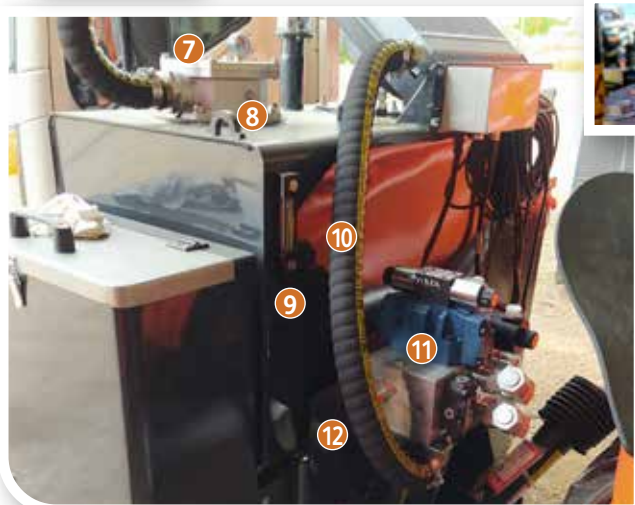
- 11 ASPIRATION CUT OFF VALVE 2 1/2" Ref. V130019
- 12 SIMPLE GEAR BOX Ref. V130013
- 13 VANE PUMP Ref. V130030
- 14 VARIABLE DISPLACEMENT PUMP Ref. V130040
PEELERS PUMP Ref. V130050 (Optional)

1.3.4. HYDRAULIC POWER UNIT TRV 2016/2020 VERSION



COMPLETE HYDR. POWER UNIT Ref. V131400

- 1** COMPLETE HEAT EXCHANGER ASSEMBLY Ref. V131030
 - Heat Exchanger Panel Ref. V131031
 - Fan Ref. V131032
 - Thermostat Ref. V131033
- 2** FILLING CAP Ref. V131003
- 3** TANK Ref. V131401
- 4** FENDER Ref. V131404
- 5** TANK WHEEL Ref. V131006



- 6** RETURN FILTER CLOCK Ref. V130008
- 7** RETURN FILTER Ref. V130014
- 8** FILTER CARTRIDGE RETURN Ref. V130009
- 9** OIL LEVEL Ref. V130010
- 10** RETURN HOSE Ref. V131005
- 11** HYDRAULIC MANIFOLD Ref. V130023
- 12** FRAME Ref. V131002



- 13** ASPIRATION CUT OFF VALVE 2 1/2" Ref. V130019
- 14** SIMPLE GEAR BOX Ref. V130013
- 15** VANE PUMP Ref. V130030

MODELS WITH PEELER DEVICE

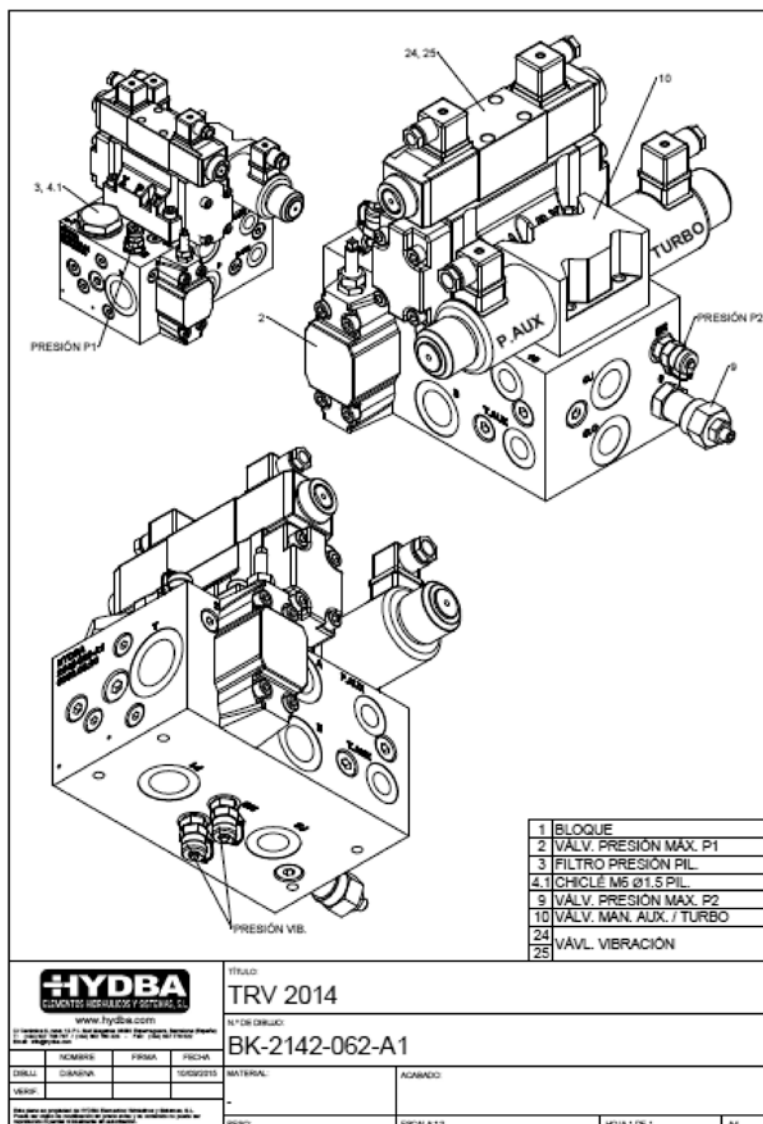


COMPLETE HYDR. POWER UNIT Ref. V131210

HYDRAULIC MANIFOLD Ref. V130023

- 1 ASPIRATION CUT OFF VALVE 1 1/2" Ref. V130019
- 2 DOUBLE GEAR BOX Ref. V131015
- 3 PEELERS PUMP Ref. V130050

- 4 PEELERS DEVICE HYDR. MANIFOLD Ref. V131020
- 5 ADAPTOR PUMP TO DOUBLE GEAR BOX Ref. V131018



1.3.5. HYDRAULIC POWER UNIT ELLIPTICAL 2013 VERSION

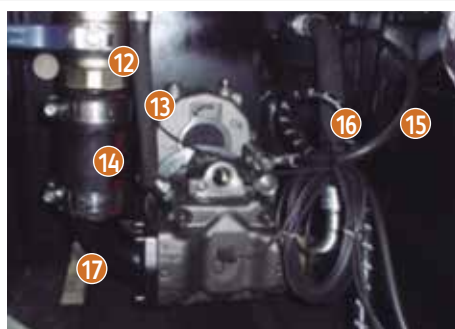


COMPLETE HYDR. POWER UNIT Ref. V131300

- 1 FILLING CAP Ref. V131303
- 2 RETURN FILTER Ref. V130014
- 3 FILTER CARTRIDGE RETURN Ref. V130009
- 4 TANK Ref. V131301
- 5 FENDER Ref. V131304
- 6 FRAME Ref. V131302



- 7 HYDRAULIC MANIFOLD Ref. V131321
- 8 OIL LEVEL Ref. V131010
- 9 PRESSURE HOSE TRAMO 2 Ref. V131312
- 10 CONTROL HOSE TRACT 2 Ref. V131332



- 11 RPM SENSOR Ref. V131307
- 12 ASPIRATION CUT OFF VALVE 2 1/2" Ref. V130019
- 13 DRAIN HOSE Ref. V131340
- 14 ASPIRATION HOSE Ref. V131320
- 15 CONTROL HOSE TRACT 1 Ref. 131331
- 16 PRESSURE HOSE TRACT 1 Ref. V131311
- 17 FLANGE Ref. V131305
- 18 SIMPLE GEAR BOX Ref. V130013
- 19 CPU Ref. V131306

1.4. Electronic devices Control, power box, wiring

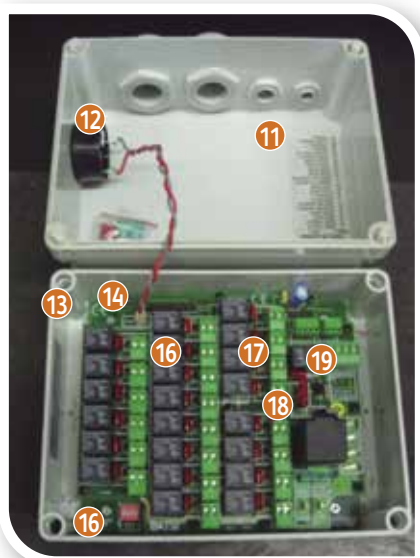
1.4.1. PROGRESSIVE TOWLINE VERSION



- 1 CONTROL FOR MACHINE MOVEMENTS
Ref. V141100
- 2 VIBRATION CONTROL Ref. V141200
- 3 JOYSTICK TYPE 1 (x3) Ref. V141101
- 4 JOYSTICK TYPE 2 Ref. V141102
- 5 WIRING No. 1 Ref. V141103
- 6 WIRING No. 2 Ref. V141104
- 7 VIBRATION CONTROL SUPPORT Ref. V141201



- 8 COMPLETE POWER PACK Ref. V141300
- 9 MAIN CONNECTION WIRING Ref. V141304
- 10 VALVES CONNECTION WIRING Ref. V141305
(quantity varies depending on machine models)



- COMPLETE POWER PACK** Ref. V141300
- 11 LID Ref. V141301
 - 12 BUZZER Ref. V141303
 - 13 BOX Ref. V141302
 - 14 ELECTRONIC BOARD No. 1 Ref. V141310
 - 15 ELECTRONIC BOARD No. 2 Ref. V141320
 - 16 CONNECTOR TYPE 1 (x22) Ref. V141311
 - 17 CONNECTOR TYPE 2 Ref. V141312
 - 18 CONNECTOR TYPE 3 Ref. V141313
 - 19 CONNECTOR TYPE 4 Ref. V141314

1.4.2. TRV (JOYSTICK) VERSION 2012



- 1 CONTROL FOR MACHINE MOVEMENTS AND VIBRATION Ref. V142100
- 2 PUSH BUTTON (x8) Ref. V142101 (Indicate push button colour)
- 3 WIRING No. 1 Ref. V142103
- 4 JOYSTICK MALE CONNECTOR Ref. V142104
- 5 JOYSTICK FEMALE CONNECTOR Ref. V142105
- 6 COMPLETE POWER PACK Ref. 142200
- 7 LID Ref. V142203
- 8 BOX Ref. V142204

COMPLETE POWER PACK Ref. 142200

- 9 FUSES BOARD Ref. V142205
- 10 CPU Ref. V142201
- 11 RELAYS Ref. V142202 (Quantity of relays depends on model)
- 12 POWER WIRING Ref. V142211
- 13 JOYSTICK WIRING Ref. V142212
- 14 VALVES MANIFOLD WIRING Ref. V142213
- 15 VIBRATION MANIFOLD WIRING Ref. V142214

1.4.3. TRV VERSION (JOYSTICKS BOARD) 2012



- 1 CONTROL FOR MACHINE MOVEMENTS AND VIBRATION Ref. V143100
- 2 JOYSTICK (x4) Ref. V143101
- 3 SELECTOR (x4) Ref. V143102
- 4 BOX Ref. V143302
- 5 BOX WIRING Ref. V143105

- 6 POWER WIRING Ref. V143103
- 7 GENERAL WIRING Ref. V143104

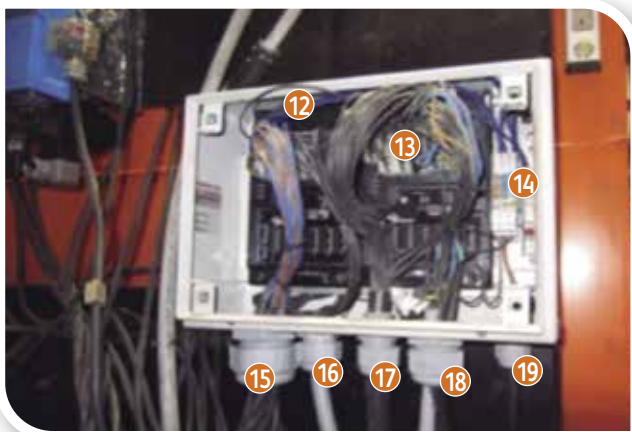
1.4.4. ELLIPTICAL VERSION 2012



- 1 JOYSTICK Ref. V144100
- 2 PUSH BUTTON Ref. V142101 (indicate colour)
- 3 CONTROL PANEL Ref. V144101
Ask for separate components



- 4 WIRING No. 1 JOYSTICK Ref. V144103
- 5 WIRING No. 2 CONTROL PANEL Ref. V144105
- 6 CONTROL PANEL CONNECTOR Ref. V144106
- 7 JOYSTICK FEMALE CONNECTOR Ref. V144104
- 8 JOYSTICK MALE CONNECTOR Ref. V144107
- 9 COMPLETE POWER PACK Ref. V144200
- 10 LID Ref. V142203
- 11 BOX Ref. V142204



- 12 CPU 1 Ref. V144201
- 13 CPU 2 Ref. V144202
- 14 FUSE BOARD Ref. V144205
- 15 VIBRATION MANIFOLD WIRING Ref. V144211
- 16 CONTROL PANEL WIRING Ref. V144212
- 17 VALVES MANIFOLD WIRING Ref. V144213
- 18 CONTROL + VIBRATION MANIFOLD AND SENSORS WIRING Ref. V144214
- 19 POWER WIRING Ref. V144215

1.4.5. TRV 2013/2020 (JOYSTICK)



TRV JOYSTICK CONTROL

- 1 COMPLETE POWER PACK Ref. V145200
- 2 WIRING No. 1 TRV Ref. V145103
- 3 WIRING No. 2 Ref. V145104
- 4 E.V. CONNECTORS Ref. V145105
- 5 PUSH BUTTON Ref. V142101 (Indicate colour)
- 6 JOYSTICK Ref. V145100

NOTA: For parts of ELECTRONIC SYSTEM components, it is necessary to indicate MODEL and NUMBER of FRAME.

1.4.6. TRV 2013/2017 (CAJA JOYSTICKS)



ELECTRICAL TRV CONTROL

- 1 COMPLETE POWER PACK Ref. V146200
- 2 JOYSTICK Ref. V146100
- 3 PUSH BUTTONS Ref. V146101
- 4 WIRING No. 1 Ref. V146103
- 5 WIRING No. 2 Ref. V146104
- 6 E.V. CONNECTORS Ref. V146105

NOTA: for spare parts of ELECTRONIC SYSTEM components, it is necessary to indicate MODEL and NUMBER of FRAME MACHINE.

1.4.7. ELLIPTICAL 2013



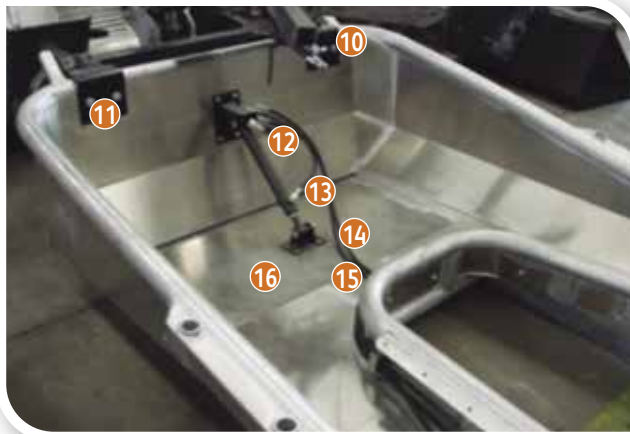
ELLIPTICAL CONTROL

- 1 JOYSTICK Ref. V147100
- 2 PUSH BUTTONS Ref. V147101
- 3 DISPLAY Ref. V147102
- 4 DISPLAY WIRING Ref. V147104
- 5 JOYSTICK WIRING Ref. V147103

2. Collection platform



- 1 ALUMINUM BOX Ref. V20000 (Indicate Model)
- 2 FLANGE FOR HOSE FIXING (x4) Ref. 200103
- 3 HOSE 1 TRACT 1 (x2) Ref. V200211
- 4 HOSE 2 TRACT 1 (x2) Ref. V200221
- 5 ROTARY CYLINDER FOR UMBRELLA OPENING (x2) Ref. V200200
- 6 ROTARY CYLINDER FOR UMBRELLA OPENING (splined shaft) (x2) Ref. V200201
- 7 STRAIGHT KEY SHAFT (x2) Ref. V200230
- 8 SPLINED SHAFT (x2) Ref. V200231
- 9 SEAL KIT (x2) Ref. V200202



- 10 PLATFORM SUPPORTS (x2) Ref. V200105
- 11 HOSE 1 TRACT 1 OPEN/CLOSE DOOR CYLINDER Ref. V200311
- 12 HOSE 2 TRACT 1 OPEN/CLOSE DOOR CYLINDER Ref. V200321
- 13 OPEN/CLOSE DOOR CYLINDER Ref. V200300
- 14 HOSE 1 TRACT 2 OPEN/CLOSE UMBRELLA CYLINDER Ref. V200212
- 15 HOSE 2 TRACT 2 OPEN/CLOSE UMBRELLA CYLINDER Ref. V200222
- 16 DOOR Ref. V200101



- 17 HINGES (x2) REF. V200102

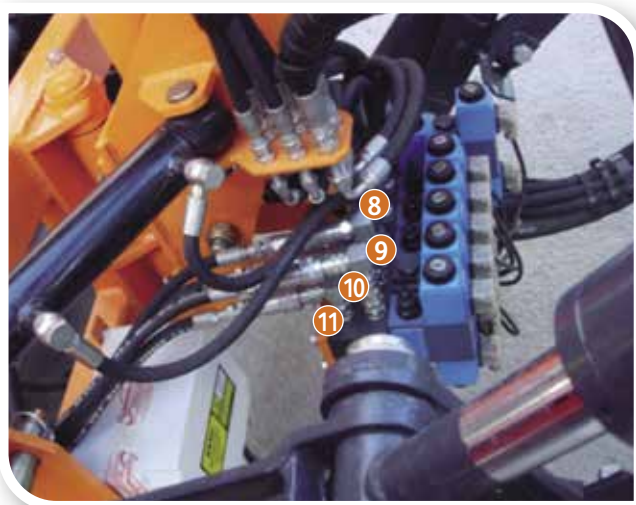
REMARK: it is necessary to indicate MODEL or MACHINE No. when ordering PLATFORM SPARE PARTS.



- 1 UPPER SUPPORT Ref. V200304
- 2 OPEN/CLOSE DOOR CYLINDER Ref. V200300
- 3 BOLT (x2) Ref. V200303
- 4 LOWER SUPPORT Ref. V200305
- 5 SEAL KIT Ref. V200302



- 6 RETENTION VALVE Ref. V200104
- 7 PLATFORM SUPPORTS (x2) Ref. V200105



- 8 HOSE 1 TRACT 3 OPEN/CLOSE UMBRELLA CYLINDER Ref. V200213
- 9 HOSE 2 TRACT 3 OPEN/CLOSE UMBRELLA CYLINDER Ref. V200223
- 10 HOSE 1 TRACT 3 OPEN/CLOSE DOOR CYLINDER Ref. V200313
- 11 HOSE 2 TRACT 3 OPEN/CLOSE DOOR CYLINDER Ref. V200323

REMARK: it is necessary to indicate MODEL or MACHINE No. when ordering PLATFORM SPARE PARTS.



- 1 UPPER COMB Ref. V200401
- 2 FRONT FRAME Ref. V200400
- 3 SIDE COMB (x2) Ref. V200403
- 4 NET Ref. V200404
- 5 LOWER COMB (x2) Ref. V200402
- 6 CANVAS FIXING PLATEN (x10) Ref. V200405
- 7 BAR STOP PROTECTOR (x2) Ref. V200406
- 8 LEFT CANVAS Ref. V200501
- 9 RIGHT CANVAS Ref. V200502

REMARK: it is necessary to indicate MODEL or MACHINE No. when ordering PLATFORM SPARE PARTS.



- 10 FLAP (x2) Ref. V200407
PNA80/DGA80PLUS: Ref. V200407.80
PGA100/DGA100: Ref. V200407.100
PGA125/PGA140: Ref. V200407.125
- 11 REAR RUBBER SUPPORT (x2)
Depending on Umbrella Model:
PNA80/DGA80PLUS: Ref. V200421 (17,5 cm)
PGA100/DGA100: Ref. V200422 (25 cm)
PGA125/PGA140: Ref. V200423 (35 cm)
- 12 FRONT RUBBER SUPPORT (x2)
Depending on Umbrella Model:
PNA80/DGA80PLUS: Ref. V200422 (25 cm)
PGA100/DGA100: Ref. V200423 (35 cm)
PGA125/PGA140: Ref. V200423 (35 cm)
- 13 UMBRELLA BAR SKIRT Ref. V200504



- 14 PLATEN TYPE 1 (x2) Ref. V200411
- 15 PLATEN TYPE 2 (x8) Ref. V200412
- 16 PLATEN TYPE 3 (x2) Ref. V200413
- 17 CANVAS FIXING SHACKLE (x10) Ref. V200503
- 18 PLATEN TYPE 4 (x2)
Depending on Umbrella Model:
Mod. PGA Ref. V200414
Mod. PNA Ref. V200415
- 19 BAR BOLTS (x8 or x6) Ref. V200510
- 20 WAVE RUBBER (x2) Ref. V200416
- 21 ROUND HOOK (x2) Ref. V200417
- 22 PLATEN TYPE 4 (x2) Mod. PNA Ref. V200415
- 23 PLATEN TYPE 4 (x2) Mod. PGA Ref. V200414



REMARK: it is necessary to indicate MODEL or MACHINE No. when ordering PLATFORM SPARE PARTS.



1 GREASE POINTS (x8) Ref. V200516



2 ROD FOR LEFT CANVAS
Model PNA Ref. V200541
Model PGA Ref. V200543

3 ROD FOR RIGHT CANVAS
Model PNA Ref. V200542
Model PGA Ref. V200544



FOR MODELS WITH PEELER DEVICE (DGA):

4 ROD 1 FOR LEFT CANVAS Ref. V200545

5 ROD 1 FOR RIGHT CANVAS Ref. V200547

6 ROD 2 FOR LEFT CANVAS Ref. V200546

7 ROD 2 FOR RIGHT CANVAS Ref. V200548

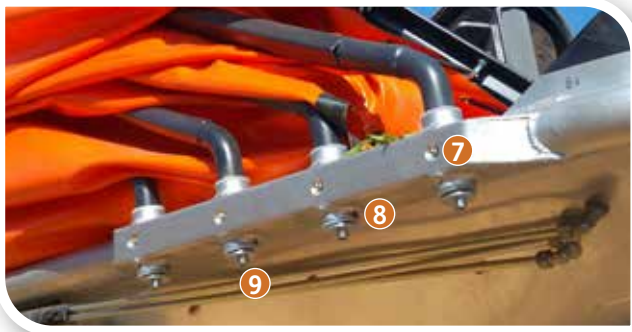
REMARK: it is necessary to indicate MODEL or MACHINE No. when ordering PLATFORM SPARE PARTS.



- 1** BAR No. 2 (x2) COMPLETE WITH BOLT
Minimum Angle Ref. V200524
Regular Angle Ref. V200525
- 2** BAR No. 3 (x2) COMPLETE WITH BOLT
Minimum Angle Ref. V200526
Regular Angle Ref. V200527
- 3** BAR No. 4 (x2) COMPLETE WITH BOLT
Minimum Angle Ref. V200528
Regular Angle Ref. V200529
- 4** BAR No. 5 (x2) COMPLETE WITH BOLT
Minimum Angle Ref. V200530
Regular Angle Ref. V200531



- 5** BAR PROTECTOR (x8) Ref. V200511
- 6** BAR CAP (x8) Ref. V200512

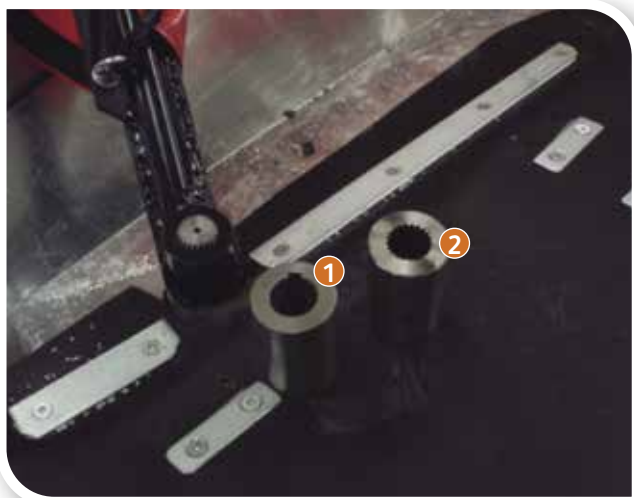


- 7** PIN (x16) Ref. V200513
- 8** WASHER (x16) Ref. V200514
- 9** NYLON CAP (x16) Ref. V200515



- 10** RIGHT OPENING BAR COMPLETE WITH PIVOT BUSHING BOLT:
Minimum Angle Ref. V200522
Regular Angle Ref. V200523
RIGHT OPENING BAR COMPLETE WITH GROOVED BUSHING BOLT:
Minimum Angle Ref. V200582
Regular Angle Ref. V200583
- 11** LEFT OPENING BAR COMPLETE WITH PIVOT BUSHING BOLT:
Minimum Angle Ref. V200520
Regular Angle Ref. V200521
LEFT OPENING BAR COMPLETE WITH GROOVED BUSHING BOLT:
Minimum Angle Ref. V200580
Regular Angle Ref. V200581
- 12** LEFT CANVAS Ref. V200501
- 13** RIGHT CANVAS Ref. V200502

REMARK: it is necessary to indicate PLATFORM MODEL or CANVAS DIMENSIONS or MACHINE No. when ordering CANVAS, OPENING BARS or BAR BOLTS SPARE PARTS.



- 1 OPENING BAR CAP FOR STRAIGHT KEY SHAFT (x2) Ref. V200551
- 2 OPENING BAR CAP FOR SPLINED SHAFT (x2) Ref. V200552



COMPLETE CANVAS SUPPLEMENT (BARS + CANVAS) 0,5m
Ref. V200560

- 3 BAR SUPPLEMENT 0,5m Ref. V200561
- LEFT CANVAS SUPPLEMENT 0,5m Ref. V200562
- RIGHT CANVAS SUPPLEMENT 0,5m Ref. V200563

COMPLETE CANVAS SUPPLEMENT (BARS + CANVAS) 1m
Ref. V200570

- 4 BAR SUPPLEMENT 1m Ref. V200571
- LEFT CANVAS SUPPLEMENT 1m Ref. V200572
- RIGHT CANVAS SUPPLEMENT 1m Ref. V200573

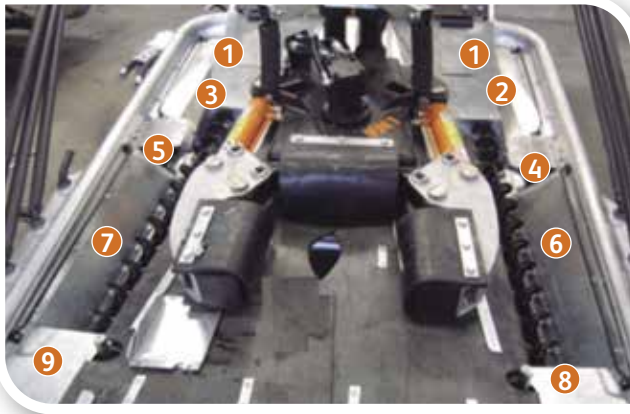


- 5 CANVAS TRIANGLES (x2) Ref. V200580



3. Annexes

3.1. Machines equipped with peeler device



- ❶ WINDOW (x2) Ref. V300138
- ❷ LEFT PLATE No. 1
DGA80+ Ref. V300111
DGA100 Ref. V300121
- ❸ RIGHT PLATE No. 1
DGA80+ Ref. V300112
DGA100 Ref. V300122
- ❹ LEFT PLATE No. 2
DGA80+ Ref. V300113
DGA100 Ref. V300123
- ❺ RIGHT PLATE No. 2
DGA80+ Ref. V300114
DGA100 Ref. V300124
- ❻ CHANNEL PLATE LEFT WORM
DGA80+ Ref. V300115
DGA100 Ref. V300125
- ❼ CHANNEL PLATE RIGHT WORM
DGA80+ Ref. V300116
DGA100 Ref. V300126
- ❽ LEFT PLATE No. 4
DGA80+ Ref. V300117
DGA100 Ref. V300127
- ❾ RIGHT PLATE No. 4
DGA80+ Ref. V300118
DGA100 Ref. V300128

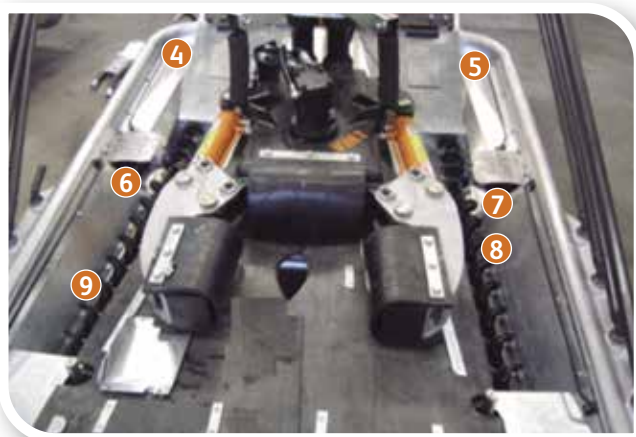


- ❿ PLATE No. 5
DGA80+ Ref. V300129
DGA100 Ref. V300130

REMARK: it is necessary to indicate MODEL or MACHINE
No. when ordering PLATFORM/PEELER SPARE PARTS.



- 1 FILL SENSOR (x2) Ref. V300200
NEW FILL SENSOR (x2) Ref. V300201
- 2 PLATE No. 6 (x2) Ref. V300131
- 3 LOCKING LIDS SET (x4) Ref. V300133



- 4 UPPER RIGHT LOCKING LID Ref. V300134
- 5 UPPER LEFT LOCKING LID Ref. V300135
- 6 LOWER RIGHT LOCKING LID Ref. V300136
- 7 LOWER LEFT LOCKING LID Ref. V300137
- 8 LEFT CONVEYOR WORM Ref. V300301
- 9 RIGHT CONVEYOR WORM Ref. V300302



- 10 WORM MOTOR (x2) Ref. V300303
Ask for separate components

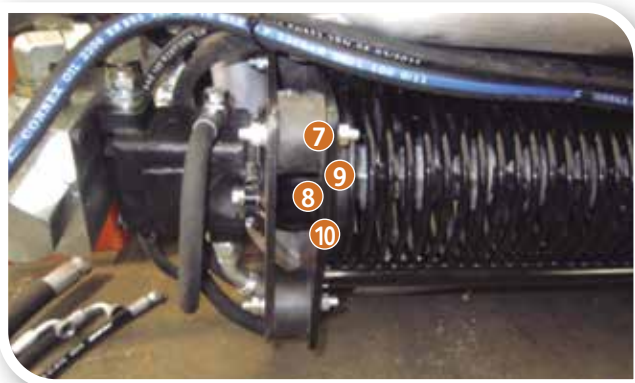
REMARK: it is necessary to indicate MODEL or MACHINE No. when ordering PLATFORM/PEELER SPARE PARTS.



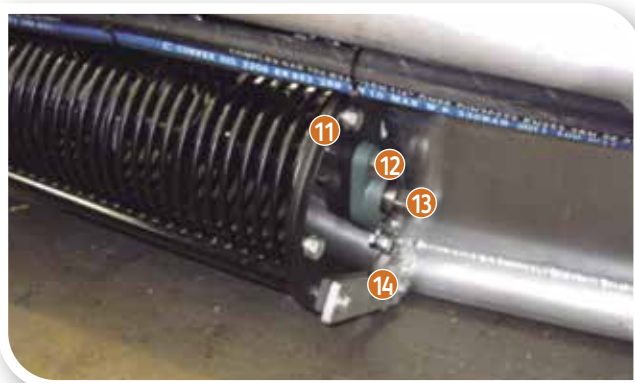
- 1 LEFT PEELER COMPLETE KIT (Motor not included) Ref. V300401
- 2 RIGHT PEELER COMPLETE KIT (Motor not included) Ref. V300402



- 3 LEFT PEELER BODY Ref. V300410
- 4 RIGHT PEELER BODY Ref. V300411
- 5 PEELER MOTOR (x2) Ref. V300420
- 6 MOTOR SUPPORT (x2) Ref. V300421

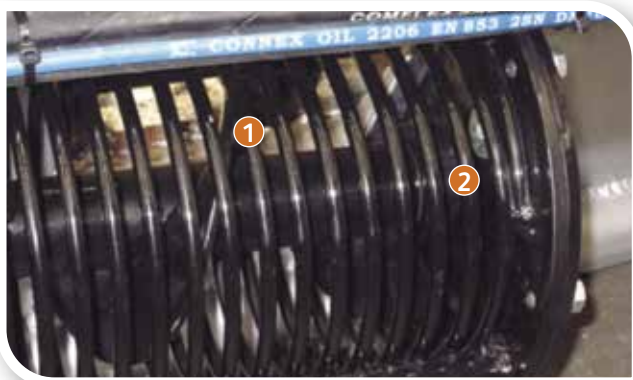


- 7 SILENTBLOCKS (x8) Ref. V300422
- 8 UNION SHAFT MOTOR-PEELER (x2) Ref. V300423
- 9 SHAFT BEARINGS (x4) Ref. V300428
- 10 RETAINING RING (x2) Ref. V300429



- 11 PEELER LOCKING LID (x2) Ref. V300424
- 12 BEARING AND SUPPORT (x2) Ref. V300425
- 13 SHAFT (x2) Ref. V300426
- 14 SUPPORT PLATE (x2) Ref. V300427

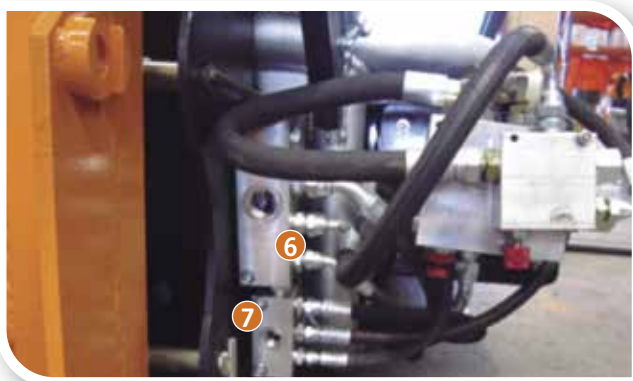
REMARK: it is necessary to indicate MODEL or MACHINE
No. when ordering PLATFORM/PEELER SPARE PARTS.



- 1 LEFT PEELER CONVEYOR WORM Ref. V300431
RIGHT PEELER CONVEYOR WORM Ref. V300432
- 2 CAGE NUT (x2) Ref. V300433



- 3 SEPARATOR 8 TIPS Ref. V300443
- 4 PEELER SIMPLE RUBBER
Hard Composite Ref. V300454
Soft Composite Ref. V300455
- 5 PEELER DOUBLE RUBBER Ref. V300453



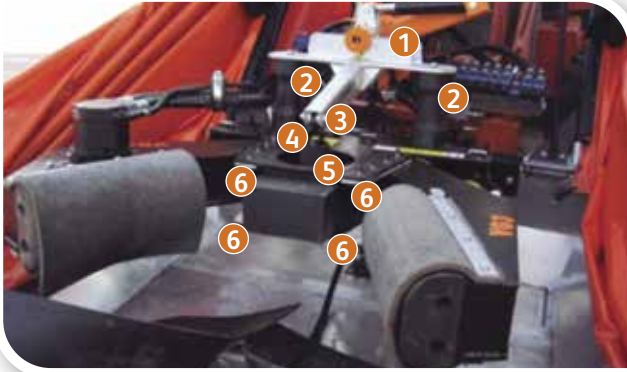
- 6 UNION FRAME 1 Ref. V300501
- 7 UNION FRAME 2 Ref. V300502



- 8 PEELERS FLOW REGULATOR V300601
- 9 WORM MOTORS FLOW REGULATOR V300602

REMARK: it is necessary to indicate MODEL or MACHINE
No. when ordering PLATFORM/PEELER SPARE PARTS.

3.2. Machines equipped with Zaytun vibration head



- 1 VIBRATION HEAD SUPPORT Ref. V320150
- 2 SILENT BLOCKS (x2) Ref. V111002
- 3 CAPS (x2) Ref. V320005
- 4 CHAIN Ref. V320003
- 5 CHAIN PROTECTOR Ref. V320007
- 6 NYLON GUIDINGS (x4) Ref. V320009



- 7 COMPLETE VIBRATION HEAD Ref. V320000
- 8 COMPLETE RIGHT ARM Ref. V320110
- 9 RIGHT ARM FRAME Ref. V320111
- 10 LOG STOP BLOCK Ref. V320171
- 11 CLAMPING ARM BOLT (x2) Ref. V320004
NUT (x2) Ref. V113104
- 12 CENTRAL BOX Ref. V320001
- 13 COMPLETE LEFT ARM Ref. V320120
- 14 LEFT ARM FRAME Ref. V320121
- 15 CLAMPING ARM FLAP (x2)
Regular Composite Ref. V320152
Fabric Composite Ref. V320151
- 16 FLAPS FIXING PLATEN (x4) Ref. V320141



- 16 FLAPS FIXING PLATEN (x4) Ref. V320141
- 17 CLAMPING ARM BLOCK (x2)
Regular Composite Ref. V320131
Soft Composite Ref. V320132
- 18 SIDE COVER Ref. V320006



- 19 UPPER SUPPLEMENT Ref. V320011
- 20 COUNTERWEIGHT Ref. V320010
- 21 REDUCTION SUPPLEMENT Ref. V320012
- 22 COUNTERWEIGHT SHAFT Ref. V320008



- 1 BOLT (x4) Ref. V320103
NUT (x2) Ref. V113104
- 2 TIGHTEN CLAMP CYLINDER (x2) Ref. V320100



- 2 TIGHTEN CLAMP CYLINDER (x2) Ref. V320100
- 3 SEAL KIT (x2) Ref. V320102

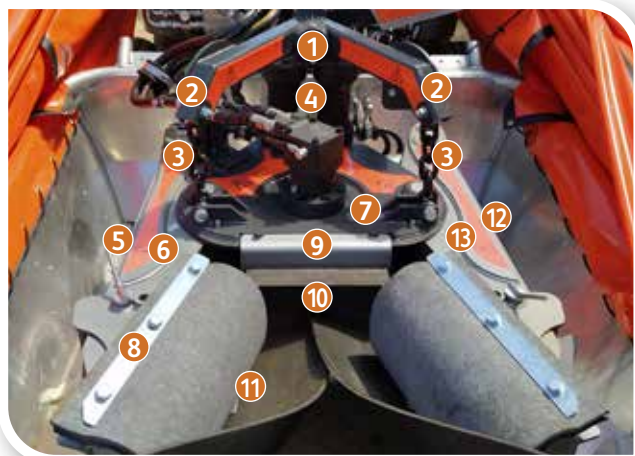


- 4 HOSE 1 TRACT 1 (x2) Ref. V320311
- 5 HOSE 2 TRACT 1 (x2) Ref. V320321



- 6 DOUBLE CHECK VALVE Ref. V320330
- 7 HOSE FLANGE (x3) Ref. V113001

3.3. Machines equipped with Z10 vibration head 2013-2020



- 1 VIBRATION HEAD SUPPORT Ref. V121150
- 2 CAPS (x2) Ref. V111005
- 3 CHAIN (x2) Ref. V111003 (Indicate links)
- 4 SILENT BLOCKS (x2) Ref. V111002
- COMPLETE VIBRATION HEAD Ref. V330000
- 5 COMPLETE RIGHT ARM Ref. V330110
- 6 RIGHT ARM FRAME Ref. V330111
- 7 CENTRAL BOX Ref. V330001
- 8 LOG STOP FIXING PLATEN (x2) Ref. V330142
- 9 PROTECTION COVER Ref. V330006
- 10 LOG STOP BLOCK (*) Ref. V330171
- 11 LOG STOP FLAP (*) Ref. V330180
- 12 COMPLETE LEFT ARM Ref. V330120
- 13 LEFT ARM FRAME Ref. V330121



- 14 CLAMPING ARM BOLTS 280xØ40 (x2) Ref. V330004
- 15 CLAMPING ARM BOLTS 280xØ50 (x2) Ref. V330005
- NUTS (x2) Ref. V113104
- 16 FLAPS FIXING PLATEN (x4) Ref. V330141
- 17 CLAMPING ARM BLOCK (x2)
- Regular Composite Ref. V330131
- Soft Composite Ref. V330132
- 18 CLAMPING ARM OUTER FLAP (x2)
- Regular Composite Ref. V330152
- Soft Composite Ref. V330153
- Fabric Composite Ref. V330150
- 19 CLAMPING ARM INNER FLAP (x2)
- Regular Composite Ref. V330160
- Soft Composite Ref. V330161
- 20 NYLON GUIDINGS (x2) Ref. V330009



- 21 COUNTERWEIGHT Ref. V330010
- 22 COUNTERWEIGHT SHAFT Ref. V330008
- 23 COUNTERWEIGHT SHAFT (for vibration heads from 2014 on) Ref. V330014
- 24 INTERMEDIATE SUPPLEMENT 10mm Ref. V330013
- 25 UPPER SUPPLEMENT 20mm Ref. V330011
- 26 CAPS FOR CLAMPING ARM BOLTS (x2) Ref. V330003

(*) Installed on particular applications only.



- 1 BOLT 230xØ35 (x2) Ref. V330103
NUTS (x2) Ref. V113104
- 2 TIGHTEN CLAMP CYLINDER (x2) Ref. V330100
- 3 BOLT 200xØ35 (x2) Ref. V330104
NUTS (x2) Ref. V113104
- 4 SEAL KIT (x2) Ref. V330102
- 5 HOSE 1 TRACT 1 (x2) Ref. V330311
- 6 HOSE 2 TRACT 1 (x2) Ref. V330321
- 7 DOUBLE CHECK VALVE Ref. V320330
(versions up to 2013)
From 2014 on, INDIVIDUAL CHECK VALVE INSERTED
IN CLAMPING CYLINDER Ref. V330331
- 8 BOLT (x2) Ref. V330190
- 9 ADJUSTABLE LEFT SUPPORT Ref. V330181



- 10 ADJUSTABLE RIGHT SUPPORT Ref. V330182

3.4. Machines equipped with Z20 vibration head (previous 2014)



- 1 VIBRATION HEAD SUPPORT Ref. V121150
- 2 CAPS (x2) Ref. V111005
- 3 SILENT BLOCKS (x2) Ref. V111002
- 4 CHAIN (x2) Ref. V111003
COMPLETE VIBRATION HEAD Ref. V340000
- 5 COMPLETE RIGHT ARM Ref. V340110
- 6 RIGHT ARM FRAME Ref. V340111
- 7 LOG STOP FIXING PLATEN (x2) Ref. V330142
- 8 NYLON GUIDINGS (x2) Ref. V330009
- 9 PROTECTION COVER Ref. V340006
- 10 LOG STOP BLOCK (installed on particular applications only)
Ref. V330171
- 11 LOG STOP FLAP Ref. V330180
- 12 ADJUSTABLE LEFT SUPPORT Ref. V340181
- 13 BOLT (x2) Ref. V330190



- 14 CLAMPING ARM BOLTS 280xØ40 (x2) Ref. V330004
NUTS (x2) Ref. V113104
- 15 CENTRAL BOX Ref. V340001
- 16 COMPLETE LEFT ARM Ref. V340120
- 17 LEFT ARM FRAME Ref. V340121
- 18 FLAPS FIXING PLATEN (x4) Ref. V330141
- 19 CLAMPING ARM OUTER FLAP (x2)
Regular Composite Ref. V330152
Soft Composite Ref. V330153
Fabric Composite Ref. V330150
- 20 ADJUSTABLE RIGHT SUPPORT Ref. V340182
- 21 CLAMPING ARM BLOCK (x2)
Regular Composite Ref. V330131
Soft Composite Ref. V330132
- 22 CLAMPING ARM INNER FLAP (x2)
Regular Composite Ref. V330160
Soft Composite Ref. V330161



- 23 PROTECTION COVER Ref. V340006



- 1 COUNTERWEIGHT Ref. V330010
- 2 COUNTERWEIGHT SHAFT Ref. V330008
- 3 INTERMEDIATE SUPPLEMENT 10mm Ref. V340013
- 4 UPPER SUPPLEMENT 20mm Ref. V340011

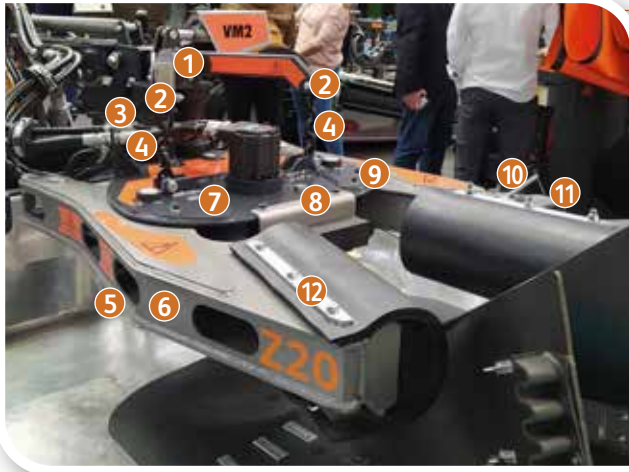


- 5 BOLT 230xØ35 (x2) Ref. V330103
- NUTS (x2) Ref. V113104
- 6 BOLT 200xØ35 (x2) Ref. V340104



- 7 TIGHTEN CLAMP CYLINDER (x2) Ref. V340100
- 8 HOSE 1 TRACT 1 (x2) Ref. V340311
- 9 HOSE 2 TRACT 1 (x2) Ref. V340321
- 10 DOUBLE CHECK VALVE Ref. V320330
(versions up to 2013)
From 2014 on, INDIVIDUAL CHECK VALVE INSERTED
IN CLAMPING CYLINDER Ref. V330331
- 11 SEAL KIT (x2) Ref. V340102

3.5. Machines equipped with Z20-2020 vibration head



- 1 VIBRATION HEAD SUPPORT Ref. V121150
- 2 CAPS (x2) Ref. V111005
- 3 SILENT BLOCKS (x2) Ref. V111002
- 4 CHAIN (x2) Ref. V111003
- 5 COMPLETE VIBRATION HEAD Ref. V350000
- 6 COMPLETE RIGHT ARM Ref. V350110
- 7 RIGHT ARM FRAME Ref. V350111
- 8 CENTRAL BOX Ref. V35001
- 9 PROTECTION COVER Ref. V350006
- 10 NYLON GUIDINGS (x2) Ref. V330009
- 11 BOLT (x2) Ref. V330190
- 12 ADJUSTABLE LEFT SUPPORT Ref. V340181
- 12 FLAPS FIXING PLATEN (x4) Ref. V330141



- 13 CLAMPING ARM OUTER FLAP (x2)
Regular Composite Ref. V350152
Soft Composite Ref. V350153
Fabric Composite Ref. V350150
- 14 CLAMPING ARM INNER FLAP (x2)
Regular Composite Ref. V350160
Soft Composite Ref. V350161
- 15 CLAMPING ARM BLOCK (x2)
Regular Composite Ref. V350131
Soft Composite Ref. V350132



- 16 ADJUSTABLE RIGHT SUPPORT Ref. V340182
- 17 CLAMPING ARM BOLTS 280xØ50 (x2) Ref. V330005
NUTS (x2) Ref. V330006
- 18 COMPLETE LEFT ARM Ref. V350120
- 19 LEFT ARM FRAME Ref. V350121
- 20 CAPS FOR CLAMPING ARM BOLTS (x2)
Ref. V330003

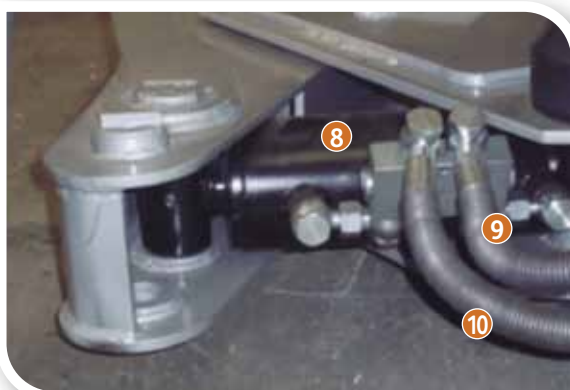




- 1 COUNTERWEIGHT Ref. V330010
- 2 COUNTERWEIGHT SHAFT Ref. V330008
- 3 COUNTERWEIGHT SHAFT (for vibration heads from 2014 on) Ref. V330014
- 4 INTERMEDIATE SUPPLEMENT 10mm Ref. V350013
- 5 UPPER SUPPLEMENT 20mm Ref. V350011



- 6 BOLT 230xØ35 (x2) Ref. V330103
NUTS (x2) Ref. V113104
- 7 BOLT 200xØ35 (x2) Ref. V330104



- 8 TIGHTEN CLAMP CYLINDER (x2) Ref. V340100
- 9 HOSE 1 TRACT 1 (x2) Ref. V350311
- 10 HOSE 2 TRACT 1 (x2) Ref. V350321



- 11 INDIVIDUAL CHECK VALVE Ref. V330331
- 12 SEAL KIT (x2) Ref. V340102



LIDS AND BEARINGS FOR VIBRATION HEADS 2014 VERSION:



THICKNESS ASSEMBLY 50MM (B):

- 1 UPPER LID Ref. V112041
- 2 CIRCLIP (x2) Ref. V112047
- 3 LOWER LID Ref. V112042
- 4 UPPER LID CAP Ref. V112043
- 5 LOWER LID CAP Ref. V112044
- 6 ROLLER BEARINGS (x2) Ref. V112045
- 7 SEAL (x2) Ref. V112046

AGROMELCA RECOMMENDS USING:



TO GREASE THE LIDS OF THE VIBRATION HEAD: SKF LGHB 2

Available canning:

- | | |
|--------|-----------------|
| 400 g | Ref. LGHB 2/0.4 |
| 5 kg | Ref. LGHB 2/5 |
| 18 kg | Ref. LGHB 2/18 |
| 50 kg | Ref. LGHB 2/50 |
| 180 kg | Ref. LGHB 2/180 |



Hydraulic Oil Agromelca, Ref. 51524 – 3HVLP



DAY BY DAY
WE IMPROVE
THE WORLD OF
COLLECTING

PLATFORM
MADE OF
ALUMINIUM

www.agromelca.com

Pol. Industrial "Las Lagunas", P-A 2
44610 Calaceite - Teruel (Spain)
Tel. 978 851 283 - Fax 978 851 243

info@agromelca.com