

EQUIPMENT COLLECTOR REAR

VTS.1 VERSION



DAY BY DAY WE IMPROVE THE WORLD OF HARVESTING
DRIED FRUITS AND OLIVE HARVESTING EQUIPMENT

Agromelca

www.agromelca.com



VTS.1 MODEL

THE SUSPENDED REAR COLLECTOR
FOR DRIED FRUITS



The **VTS** series is specially designed to overcome the limitations of rear collectors. This new series offers a totally different and innovative product with high specifications and great advantages for collecting nuts.

This machine is assembled on the rear of the tractor.

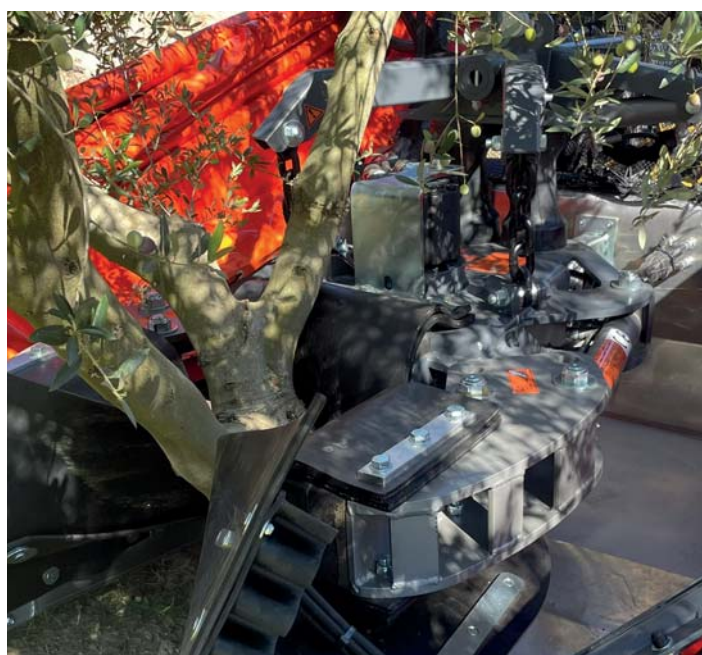
It offers great advantages such as its light weight, high performance, quickrelease from the vehicle, its easy handling, fast unloading and great visibility when attaching it to the tree.

HEAD WITH THREE POINT CLOSING

- The three-point clamping head is very lightweight.
- Attachment corrected at three points (does not damage branches, trunk or the fruit).
- Continuous circular vibration with the possibility of 30-40% power variation with a very easy operation (5 min.) depending on the type of tree to harvest (almond or olives trees).
- The clamping arms with double anchoring that allow us to attach them to trunks with diameters ranging from 8 to 40 cm (depending on the type of tree to be harvested).
- The outcome of the sum of the vibration type incorporated and the attachment system corrected at three points is that the yield percentages are excellent with no damage.

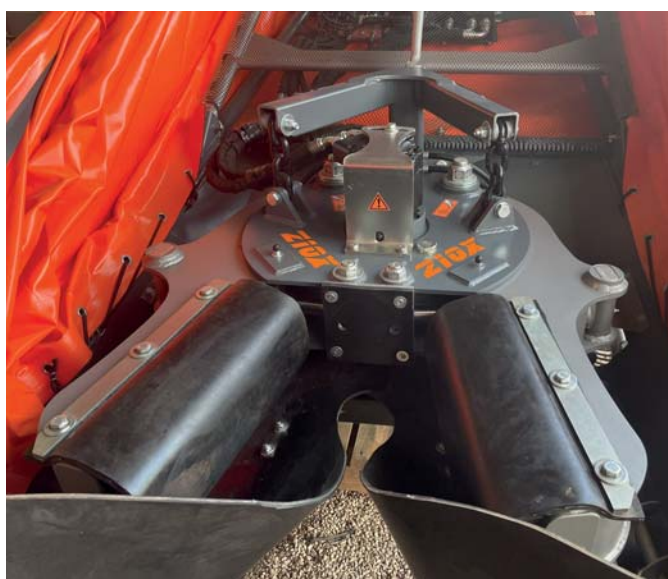
Optionally, we can mount the generic arms, which will allow us to perfectly vibrate trunks ranging from 15 to 50 cm.

The vibration we will get and the knockdown percentages will also be excellent.



Z10X HEAD (OPTIONAL)

- Very light weight.
- Continuous circular vibration with the possibility of 30-40% power variation with a very easy operation (5 min.) depending on the type of tree to harvest (almond trees).
- Fits on trunks with a diameter of between 8 to 35 cm.
- Excellent takedown percentage without damaging the tree.
- This head is not recommended for harvesting olives or other types of fruit whose trunk diameter is greater than 30 cm.



HEAD FIXING

- Head fixed to free rotation support.



CONTROLS AND MOVEMENTS COMMANDS

The movements and vibration control are managed very comfortably and simply through an electronic cobra control.



MOVEMENTS

VTS

- Opening and closing tarpaulins on the platform.
- Opening and closing vibration head arms.
- Left vibration + right vibration.
- Front repositioning.

DISPLAY (OPTIONAL)

The new display screen features:

Operation display.

Automatic movement sequencer.

Tree counter.

Hour counter.

Sensors (PTO RPM + oil temperature).



CONTROL UNIT FUNCTIONS



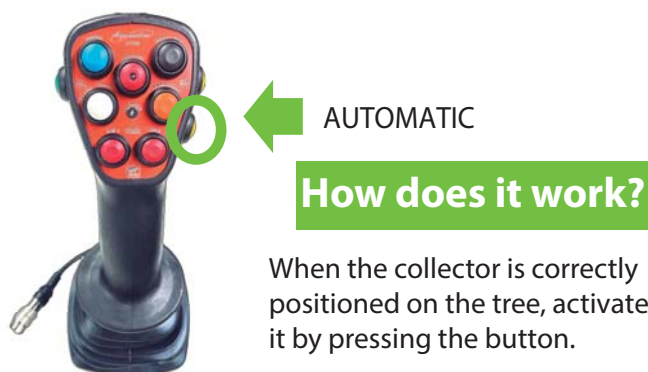
1 SIMULTANEOUS



Pressing the button activate the simultaneous. Pushing the joystick (without pressing any button) the umbrella will extend and the clamp will close automatically.

Move the joystick in the opposite direction to open the clamp and withdraw the umbrella. To deactivate this function press the button again.

2 SEQUENTIAL AUTOMATIC MOVEMENTS (Optional)



The collector performs the following actions automatically:

1. Extend canvas platform.
2. Open pincer arms.
3. Left vibration (if the operator has activated it).
4. Right vibration (if the operator has activated it).
5. Open pincer arms.
6. Retract canvas platform.

TUBULAR COLLECTING PLATFORMS

Our VTS vibration devices are equipped with the new tubular iron platform.



Tubular iron collection platform with an 80 cm mouth.

Standard diameter: 6–6.5 m.

Standard bar angle.

Hydraulic adjustment of the platform's front position. Front cylinder, operated via the tractor's control unit, to facilitate fruit unloading.

Canvas kit (optional equipment).

Two peelers and two screw augers.

Hydraulic feed and speed control for the peelers and screw augers.

The speed of the peelers and augers is maintained according to the operator's settings, regardless of the tractor engine's revs.

The peeler shaft can be easily removed for replacing the rubber parts.

The peelers and augers do not stop during vibration.

Removable peelers.

Fruit storage capacity varies depending on the type of fruit (approx. 500–700 kg).

Two screw augers have been installed inside the hopper to prevent fruit from accumulating at the peeler's outlet.

Discharge via unloading auger through the tractor's distributor.

Hydraulic motor guard for the unloading auger.

Protective skid at the bottom of the discharge pipe.

Installation of support tires (optional).

Vertical lift up to 2.5m with support tires for hydraulic gate discharge (optional).



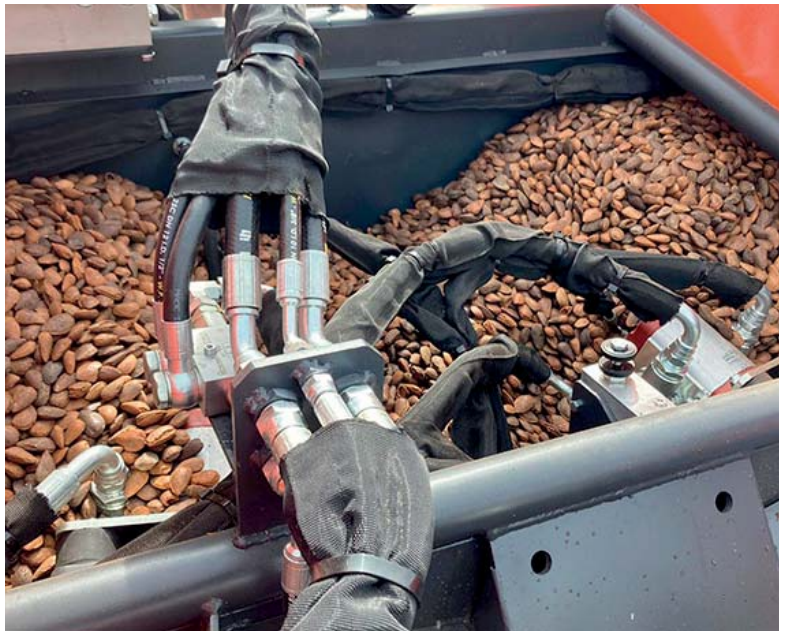
HYDRAULIC SYSTEM CONFIGURATION

We have always been committed to the reliability of our products, and therefore all the hydraulic components we install in our collectors are from renowned and top quality brands.

VTS.1

The **VTS.1** series model has the following hydraulic configuration:

1. Includes 1 left vibration + 1 right vibration.
2. Vibration brake.
3. User-adjustable compression force for the torso arms.
4. The peelers do not stop when the vibration is activated.
5. Independent speed control for peelers and augers.
6. Even if we accelerate the vehicle, the speed of the peelers and augers we have selected remains unchanged.
7. Hydraulic system comprising a twin pump with a power multiplier (540 rpm standard).
8. Intercambiador de aceite.
9. Oil tank integrated into the chassis.
10. Hydraulic speed control for movements.
11. Hydraulic unit for vibration + movements (individual flow control for each movement) + simultaneous movements (clamp arms + umbrella canvas).
12. The user can quickly increase or decrease the vibration intensity depending on the type of tree being harvested.
13. The front section of the hydraulic folding umbrella is operated via the Cobra control.



VTS.1

FEATURES	VTS.1
Quick connection and disconnection	•
Iron tubular platform with 80 cm mouth	•
Bar diameter	6 - 6,5 m
Folding front	•
Electronic cobra control + CPU	•
Display (Operation display + Automatic movement sequencer + Tree counter + Hour meter + Sensors (PTO RPM + Oil temperature))	optional
Two peelers and two augers	•
Side-discharge auger	•
Speed control of peelers and augers without any change in speed when the vehicle's accelerator is operated	•
Breakdown of peeling machines and vibrating augers	No
Vibration	1 vibration in each direction
Continuous circular vibration	•
Variation vibration power 30/40%	•
Adjustment arm tightening and vibration brake	•
Oil radiator	•
Oil tank capacity (litres)	90 l
Hydraulic system	Dual pump (variable flow + vanes)
Tractor power take-off engine revolutions	540 RPM normal
Umbrella opening and closing sound alarm	•
Free rotation support	•
Young tree arm head (3 point head)	•
Generic arm head (3 point head)	optional
Parallel head Z10X	optional
Canvas supplement	optional
Trunk capacity	500-750 kg
Removable peelers	•
Support tires	optional
2,5m vertical elevator with support tires (Discharge via hydraulic gate)	optional
Auger channeling kit for olives and other fruits	optional

Agromelca, S.L. reserves the right to make the modifications it considers necessary to the products in this catalogue without prior notice.
 (-) Standard.

WE ARE IMPROVING THE WORLD OF HARVESTING DAY BY DAY

Pol. Industrial "Las Lagunas", P-A 2 • 44610 Calaceite - Teruel (España)
Tel. 978 851 283

info@agromelca.com

Agromelca
www.agromelca.com