

REAR COLLECTION EQUIPMENT

SIDE VTL VERSION



WE ARE IMPROVING THE WORLD OF HARVESTING DAY BY DAY
EQUIPMENT FOR HARVESTING NUTS AND OLIVES

Agromelca
www.agromelca.com



VTL MODEL

THE REAR-SIDE COLLECTOR EQUIPMENT



The **VTL SIDE** series is specially designed to overcome the limitations of rear collectors. This new series offers you a totally different, innovative and high-performance product with major benefits when harvesting olives or other fruit.

This machine is assembled on the rear of the tractor. This model is conceived and designed so that it can harvest all kinds of trees.

This device offers major benefits including its light weight, high performance, quick-release from the vehicle, its agile handling, or great visibility when making the attachments to the tree.

VIBRATION HEAD Z10

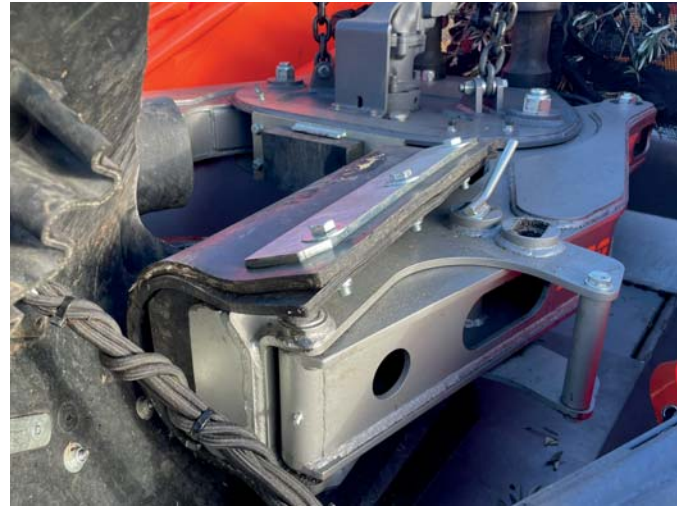
- Parallel arm closure.
- Very fast manoeuvres.
- Dual clamping cylinder, located at the rear of the head.
- Motor located on central casing, permitting circular vibrations, resulting in excellent rate of falling fruit, without damaging either the fruit or the tree.
- Permits attachment to trunks measuring between 8 cm and 40 cm in diameter.
- Can be quickly configured by the user to adapt to type of trunk to be harvested. This configuration can be done by changing the position of the rubber pads that come into contact with the trunk.
- Continuous circular vibration with the possibility of 30- 40% power variation with a very easy operation (5 min.) depending on the type of tree to harvest (almond trees or olive trees).

To adapt to all trunk diameters, from 8 to 40 cm, we can configure various parts of the head.



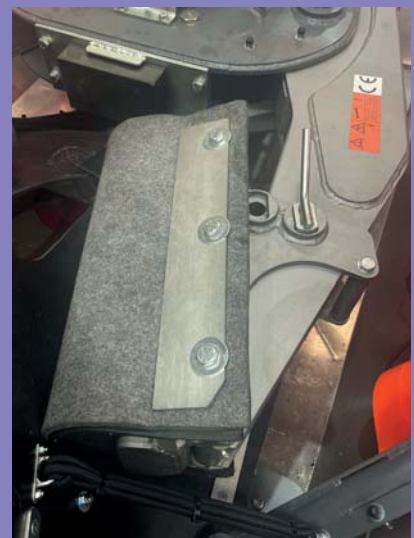
VIBRATION HEAD Z20 (OPTIONAL)

- Wide opening of the pincer. Head recommended for trees with a trunk diameter over 20 cm.
- Maximum opening of 60 cm. Larger size and designed for an excellent performance on all kinds of trees.



MODIFICATION OF POSITION OF RUBBER BLOCK SUPPORT Z10/Z20

- To guarantee good contact with the trunk and optimum performance in shaking down the fruit, the position of the block support can be adjusted.



FUNCTIONS CONTROL UNIT



DISPLAY (OPTIONAL)

The new display screen includes:

Maneuver visualization.

Automatic movement sequencer.

Tree counter.

Hour counter.

Sensors (PTO RPM + Oil temperature)



MOVEMENTS

ROTATION IN THE PINCER

The pincer can be rotated to adapt to the angle of the trunk for sloping trees.



TELESCOPIC

Permits attachment to the trunk from a distance.



VIBRATION EQUIPMENT SIDE ROTATION

The attachment to the trunk can be from a side position (right-left) or a rear position, offering flexibility given the different problems posed by the trees.

It is also possible to place the head at the rear when transporting or driving on public roads or in small spaces.



ELEVATION OF VIBRATION EQUIPMENT

It allows us to position the head either at ground level or in a raised position.



SPECIFICATIONS OF THE HYDRAULIC SYSTEM

Variable flow pump with multiplier.

Tractor power take-off rotation speed 540 RPM.

80 litre hydraulic oil tank.

Oil cooling radiator.

VIBRATION

Includes left vibration speed + right vibration speed.

Vibration brake: When the vibration button is released, the vibration brake is automatically activated, rapidly braking the head to prevent damage to the tree or trunk. Double hydraulic pump with gearbox for vibration.

MOVEMENTS

Hydraulic regulation of movement speed.

TURBO VIBRATION (Optional).

Two vibration speeds in each direction.

OTHER SPECIFICATIONS

Arm clamping control to permit selection of clamping pressure applied to the trunk, allowing improved vibration performance and preventing debarking of trunk.



GENERAL SPECIFICATIONS

The VTL model is equipped with support tyres for manoeuvring and driving, enabling its installation on small tractors.

Reduced collector height to permit unhindered manoeuvring in narrow plantation lanes or in plantations not easily accessed by harvesting machinery.

Very fast harvesting speed.

User-selected vibration power control to suit plantation and type of fruit to be harvested.

Addressable axis (optional).



VTL

CHARACTERISTICS	VTL SIDE
Quick attach and release	•
Electronic cobra control + CPU	•
Vibration	1 left vibration + 1 right vibration
Continuous circular vibration	•
Turbo vibration	optional
Variation vibration power 30/40%	•
Adjustment arm tightening and vibration brake	•
Hydraulic regulation of movement speed	•
Rotation in the pincer	•
Machine elevation	•
1 Telescopic	•
Machine side rotation (left-right)	•
Addressable axis (series fixed shaft replacement)	optional
Oil radiator	•
Oil tank capacity (litres)	80 l
Hydraulic system	1 variable flow pump + multiplier
Tractor power take-off engine revolutions	540 RPM normal
Parallel head Z10	•
Parallel head Z20	optional
Support and driving tyres	•
Anti-heat supersoft rubber components (Z10 and Z20)	optional

Agromelca, S.L. reserves the right to make the modifications it considers necessary to the products in this catalogue without prior notice.
 (*) Standard.



WE ARE IMPROVING THE WORLD OF HARVESTING DAY BY DAY

Pol. Industrial "Las Lagunas", P-A 2 • 44610 Calaceite - Teruel (España)
Tel. 978 851 283

info@agromelca.com

Agromelca
www.agromelca.com