

FRONT COLLECTOR

VMS VERSION



DAY BY DAY WE IMPROVE THE WORLD OF COLLECTING
DRIED FRUIT AND OLIVE COLLECTORS

Agromelca
www.agromelca.com





VMS SERIES

SUSPENDED FRONT-MOUNTED
HARVESTING EQUIPMENT FOR FRUITS



The VMS series is specially designed to overcome the limitations of front collectors. This new series offers you a different innovative, high-performance product with big advantages and significant advantages for collecting dried fruits.

This device gives us considerable advantages such as its lightweight, high performance, quick-release from the vehicle, its agile handling, fast unloading or excellent visibility to make the attachments to the tree.

HEAD WITH THREE POINT CLOSING (SERIAL)

- Very light weight.
- Attachment corrected at three points (does not damage branches, trunk or the fruit).
- Continuous circular vibration with the possibility of 30-40% power variation with a very easy operation (5 min.) depending on the type of tree to harvest (almond trees).
- New clamping arms with double anchoring that allow us to attach them to trunks with diameters ranging from 8 to 40 cm (depending of tree to be collected).
- The outcome of the sum of the type of vibration incorporated and the attachment corrected at three points system, is that the yield percentages are excellent without any damage.

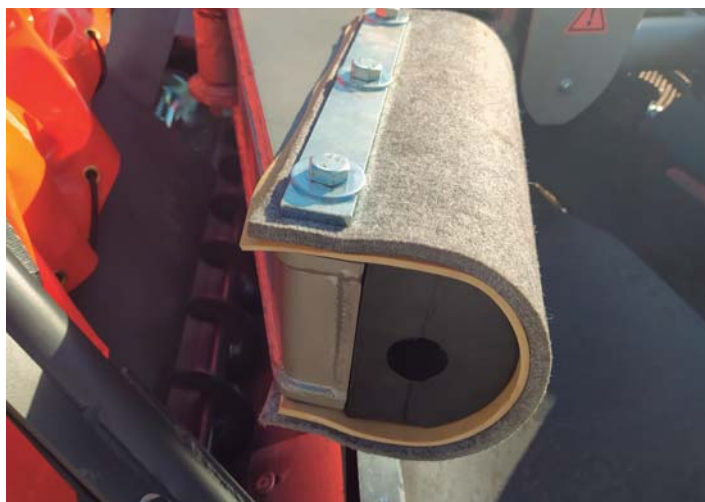
Optionally, we can mount the generic arms, which will allow us to perfectly vibrate trunks ranging from 15 to 50 cm.

The vibration we will get and the knockdown percentages will also be excellent.



HEAD Z10X (OPTIONAL)

- Very light weight.
- Continuous circular vibration with the possibility of 30-40% power variation with a very easy operation (5 min.) depending on the type of tree to harvest (almond trees).
- Attachment to trunks with diameter ranging from 8 to 35 cm.
- Excellent felling percentage without damage to the tree.
- This head is not recommended for harvesting olives or other types of fruit whose trunk diameter is greater than 30 cm.



HEAD FIXING

- Head fixed to the platform structure with silent blocks (standard).
- Head fixed to freely rotatable bracket (optional).



CONTROL PANEL AND MOVEMENTS

The movements and vibration are carried out very comfortably and simply using an electronic cobra control.



VMS

- Opening and closing tarpaulins on the platform.
- Opening, closing of vibration head arms.
- Left vibration + right vibration.

MOVEMENT AND VIBRATION CONTROLS

- The movements and vibration are carried out in a comfortable and simple way by means of an electronic cobra control.
- Simultaneous movements: extend umbrella sheets + close clamp and open clamp + pick up umbrella canvases.
- Automatic movements (optional equipment).



CONTROL UNIT FUNCTIONS



OPEN OUT CANVAS
+ CLOSE PINCER ARMS



OPEN PINCER ARMS
+ CLOSE CANVAS

1

Pressing the button activates the simultaneous. Pushing the joystick (without having to press any button) opens out the umbrella and closes the pincer automatically. Repeat the procedure, moving the joystick in the opposite direction to open the pincer and close the umbrella. Press the button again to deactivate this function



AUTOMATIC SEQUENTIAL
MOVEMENTS (Optional)

← AUTOMATIC

How does it work?

Once the harvester is correctly positioned on the tree, we activate it by pressing the button.

2

Automatically, the collector will perform the following actions:

1. Extend canvas platform.
2. Closing pincer arms.
3. Vibration left (if activated by the operator).
4. Vibration right (if activated by the operator).
5. Opening pincer arms.
6. Retract canvas platform.

TUBULAR IRON COLLECTION PLATFORM



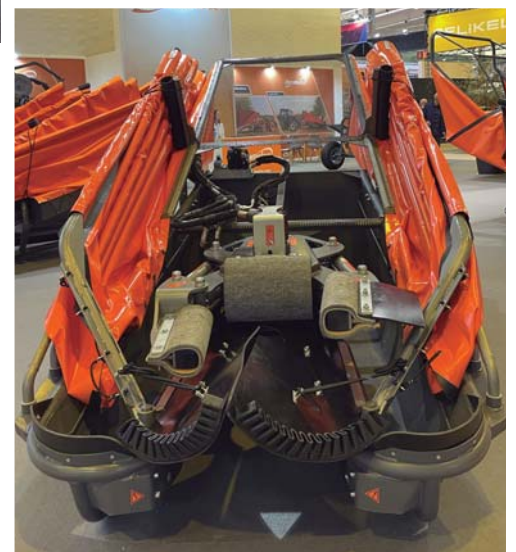
Our **VMS.1** vibration equipment (with peelers) is equipped with:

- Tubular iron collection platform with 60 cm mouth.
- Standard 6 - 6.5 m diameter.
- Normal bar angle.
- Hydraulic adjustment of platform front positioning.
- Canvas supplement (optional equipment).
- Two peelers and two fruit sorters.
- Hydraulic supply and regulation speed of the peelers and augers.
- The speed of the peelers augers is maintained according to the regulation made by the operator, regardless of the tractor's engine speed.
- Easy removal of peeler shaft to replace the rubbers.
- Peelers and augers do not stop during vibration.
- Removable peelers.
- Fruit storage capacity depending on fruit type (approximately 500-700 kg).
- Installation of two augers inside the hopper to avoid accumulation of fruit at the peeler outlet.
- Unloading by hydraulic gate.



Our **VMS.2** vibration equipment (without peelers) is equipped with:

- Tubular iron collection platform with 60 cm mouth.
- Standard 6 - 6.5 m diameter.
- Normal bar angle.
- Hydraulic adjustment of platform front positioning.
- Canvas supplement (optional equipment).
- Unloading by hydraulic gate.



INCORPORATED HINGE FOR NARROW PLANTATION SPACES (OPTIONAL)

We can incorporate the hinge system to harvest with the umbrella plantations with a not much space.

This joint allows us to rotate the entire collector 45° in one direction, and therefore we can make entering and leaving the tree operations without significant complications.

The minimum space for the hinge to work successfully is 6x3.

If we have to harvest trees with the hinge working, the umbrella diameter is recommended not to exceed 5 m.



HYDRAULIC SYSTEM CONFIGURATION

We have always been committed to the reliability of our products, and therefore all the hydraulic components we install in our collectors are from renowned and top quality brands.

The **VMS.1** series model (with peelers) incorporates the following hydraulic configuration:

1. Hydraulic regulation of the speed of the peelers and the augers.
2. Speed of peelers and the augers maintained as set by the operator, regardless of the tractor's engine speed.
3. Easy removal of the peeler shaft for rubber replacement.
4. Peelers and augers do not stop during vibra.
5. Incorporates 1 left vibration + 1 right vibration.
6. Vibration brake.
7. Regulation of the clamping force of arms to the trunk.
8. Hydraulic block + solenoid valve block movements (individual flow regulation for each movement).



9. Increase or decrease the vibration power depending on the type of tree to be harvested.
10. Cobra electronic control + power unit.
11. Simultaneous movements:
Open out umbrella canvas + close pincer
Pincer opening + collect umbrella canvas
12. Short three-point closing head with young trees arms.
13. Fruit storage capacity depends on the type of fruit (approx. 500-700 kg.).
14. Installation of two augers inside the hopper to avoid accumulation of fruit at the peeler outlet.
15. Unloading by a hydraulic gate.
16. Hydraulic tank with a capacity of 200 litres of oil.
17. Double pump (variable flow + vanes) and multiplier.



The **VMS.2** series model (without peelers) incorporates the following hydraulic configuration:

1. Incorporates 1 left vibration + 1 right vibration.
2. Vibration brake.
3. Regulation of the clamping force of arms to the trunk.
4. Hydraulic block + solenoid valve block movements (individual flow regulation for each movement).
5. Increase or decrease the vibration power depending on the type of tree to be harvested.
6. Cobra electronic control + power unit.
7. Simultaneous movements:
Open out umbrella canvas + close pincer
Pincer opening + collect umbrella canvas.
8. Short three-point closing head with young trees arms.
9. Fruit storage capacity depends on the type of fruit (approx. 600-800 kg.).
10. Unloading by a hydraulic gate.
11. Hydraulic tank with a capacity of 200 litres of oil.
12. Double pump (vanes) and multiplier.



VMS.1

FEATURES	VMS
Mixed. Almond - Dried fruits	•
Tubular iron platform	mouth 0,60 m.
Fruit tank capacity	500-700 Kg. depending on the fruit ⁽¹⁾
Standard bar diameter	6,5 m
Two peelers and two fruit augers	•
Independent speed regulation of peelers and augers without speed variation	•
Stopping of peelers and augers during the vibration	NO
Maintenance of speed of peelers and augers even if we increase the engine revolutions	YES
Sound alarm of level of fruit load	•
Umbrella opening and closing sound alarm	•
Cobra control	•
Automatic movement sequencer	optional
CLASSIC VIBRATION SYSTEM	1 vibration in each direction
Continuous circular vibration	•
Power increase counterweight supplement	optional
Adjustment arm clamping, vibration brake	•
Free swivelling support	optional
Oil radiator	•
Oil tank capacity (litres)	200 l
Hydraulic system	Double pump (variable flowrate + vanes)
Tractor power take-off engine revolutions	540 RPM normal
Head arms young tree (3 point head)	•
Generic arms head (3 point head)	optional
Parallel head Z10X	optional
Bar supplement (0,50m / 1m)	optional
45° hinge narrow plantation spaces (diameter 5 m) ⁽²⁾	optional
Opening low bars (the first two)	optional
Olive augers kit	optional
Removable peelers	•

Agromelca, S.L. reserves the right to make the modifications it considers necessary to the products in this catalogue without prior notice.

(1) Standard.. (1) Rough guide (depends on the type and characteristics of the fruit).

(2) With hinge the bar diameter will be 5 metres

VMS.2

FEATURES	VMS
Mixed. Almond - Dried fruits	•
Tubular iron platform	mouth 0,60 m.
Fruit tank capacity	600-800 Kg. depending on the fruit ⁽¹⁾
Standard bar diameter	6,5 m
Umbrella opening and closing sound alarm	•
Cobra control	•
Automatic movement sequencer	optional
CLASSIC VIBRATION SYSTEM	1 vibration in each direction
Continuous circular vibration	•
Power increase counterweight supplement	optional
Adjustment arm clamping, vibration brake	•
Free swivelling support	optional
Oil radiator	•
Oil tank capacity (litres)	200 l
Hydraulic system	Double pump (vanes + multiplier)
Tractor power take-off engine revolutions	540 RPM normal
Head arms young tree (3 point head)	•
Generic arms head (3 point head)	optional
Parallel head Z10X	optional
Bar supplement (0,50m / 1m)	optional
45° hinge narrow plantation spaces (diameter 5 m) ⁽²⁾	optional
Opening low bars (the first two)	optional
Augers kit	optional

Agromelca, S.L. reserves the right to make the modifications it considers necessary to the products in this catalogue without prior notice.

(1) Standard.. (1) Rough guide (depends on the type and characteristics of the fruit).

(2) With hinge the bar diameter will be 5 metres.

DAY BY DAY WE IMPROVE THE WORLD OF COLLECTING

Pol. Industrial "Las Lagunas", P-A 2 • 44610 Calaceite - Teruel (España)
Tel. 978 851 283

info@agromelca.com

Agromelca
www.agromelca.com