

FRONT COLLECTOR

VMS VERSION



DAY BY DAY WE IMPROVE THE WORLD OF COLLECTING
DRIED FRUIT AND OLIVE COLLECTORS

Agromelca
www.agromelca.com





VMS SERIES

SUSPENDED FRONT-MOUNTED
HARVESTING EQUIPMENT FOR NUTS



The **VMS** series is specially designed to overcome the limitations of front collectors. This new series offers you a different innovative, high-performance product with big advantages and significant advantages for collecting nuts.

This device gives us considerable advantages such as its lightweight, high performance, quick-release from the vehicle, its agile handling, fast unloading or excellent visibility to make the attachments to the tree.

HEAD WITH THREEPOINT CLOSING (STANDARD)

- Very lightweight.
- Attachment corrected at three points (does not damage branches, trunk or the fruit).
- Continuous circular vibration with the possibility of 30-40% power variation with a very easy operation (5 min.) depending on the type of tree to harvest (almond trees).
- New clamping arms with double anchoring that allow us to attach them to trunks with diameters ranging from 8 to 40 cm.
- The outcome of the sum of the type of vibration incorporated and the attachment corrected at three points system, is that the yield percentages are excellent without any damage.



Optionally, we can mount the generic arms for larger diameter trunks.

HEAD Z10X (OPTIONAL)

- Very lightweight.
- Continuous circular vibration with the possibility of 30-40% power variation with a very easy operation (5 min.) depending on the type of tree to harvest (almond trees).
- Attachment to trunmks with diameter ranging from 8 to 50 cm.
- Excellent felling percentage without damage to the tree.



HEAD FIXING

- Head fixed to the platform structure with silent blocks (standard).
- Head fixed to freely rotatable bracket (optional).



CONTROL PANEL AND MOVEMENTS

The movements and vibration are carried out very comfortably and simply using an electronic cobra control.



VMS

- Opening, closing of platform sheets.
- Opening, closing of vibration head arms.
- Left vibration + right vibration.

MOVEMENT AND VIBRATION CONTROLS

- The movements and vibration are carried out in a comfortable and simple way by means of an electronic cobra control.
- Simultaneous movements: extend umbrella sheets + close clamp and open clamp + pick up umbrella canvases.
- Automatic movements (optional equipment).



CONTROL UNIT FUNCTIONS



**OPEN OUT SHEETS
+ CLOSE Pincer ARMS**



**OPEN Pincer ARMS
+ COLLECT SHEETS**

1

Pressing the button activates the simultaneous. Pushing the joystick (without having to press any button) opens out the umbrella and closes the pincer automatically. Repeat the procedure, moving the joystick in the opposite direction to open the pincer and close the umbrella. Press the button again to deactivate this function.



**AUTOMATIC SEQUENTIAL
MOVEMENTS (Optional)**

AUTOMATIC

How does it work?

Once the harvester is correctly positioned on the tree, we activate it by pressing the button.

2

Automatically, the collector will perform the following actions:

1. Open out platform sheets.
2. Closing pincer arms.
3. Vibration left (if activated by the operator).
4. Vibration right (if activated by the operator).
5. Opening pincer arms.
6. Collecting platform sheets.

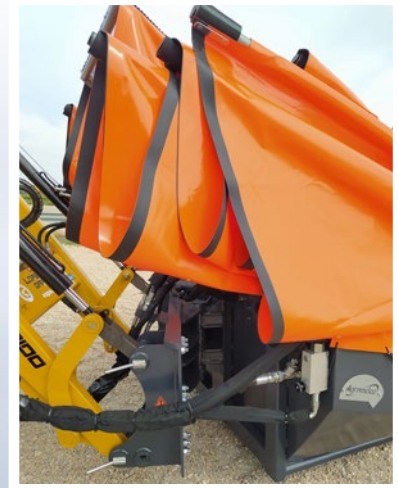
INCORPORATED HINGE FOR NARROW PLANTATION SPACES (OPTIONAL)

We can incorporate the hinge system to harvest with the umbrella plantations with a not much space.

This joint allows us to rotate the entire collector 45° in one direction, and therefore we can make entering and leaving the tree operations without significant complications.

The minimum space for the hinge to work successfully is 6x3.

If we have to harvest trees with the hinge working, the umbrella diameter is recommended not to exceed 5 m.



TUBULAR COLLECTING PLATFORMS



Our **VMS-XT10** vibration devices are equipped with the new tubular iron platform.

- Tubular iron collection platform with 60 cm mouth.
- Standard 6 - 6.5 m diameter.
- Normal bar angle.
- Hydraulic adjustment of platform front positioning.
Through the tractor distributor, the front cylinder facilitates the unloading of fruit.
- Sheet extra (optional equipment).
- Two peelers and two sorters.
- Peeler and sorter hydraulic feeding and speed regulation.
- Peeler and sorter speed maintained as set by the operator, regardless of the tractor's engine speed.
- Easy removal of peeler shaft to replace the rubbers.
- Peelers and sorters do not stop during vibration.
- Removable peelers.
- Fruit storage capacity depending on fruit type (approximately 500-700 kg).
- Installation of two sorters inside the hopper to avoid accumulation of fruit at the peeler outlet.
- Unloading by hydraulic gate.

CONFIGURATION OF THE HYDRAULIC SYSTEM

We have always been committed to the reliability of our products, and therefore all the hydraulic components we install in our collectors are from renowned and top quality brands.

The VMS series model incorporates the following hydraulic configuration:

1. Hydraulic regulation of the speed of the peelers and the sorters.
2. Speed of peelers and the sorters maintained as set by the operator, regardless of the tractor's engine speed.
3. Easy removal of the peeler shaft for rubber replacement.
4. Peelers and sorters do not stop during vibration.
5. Incorporates 1 left vibration + 1 right vibration.
6. Vibration brake.
7. Regulation of the clamping force of arms to the trunk.
8. Hydraulic block + solenoid valve block movements (individual flow regulation for each movement).



9. Increase or decrease the vibration power depending on the type of tree to be harvested.
10. Cobra electronic control + power unit.
11. Simultaneous movements: Open out umbrella sheets + close pincer Pincer opening + collect umbrella sheets.
12. Short three-point closing head with sapling arms.
13. Fruit storage capacity depends on the type of fruit (approx. 500-700 kg).
14. Installation of two sorters inside the hopper to prevent the accumulation of fruit at the peeler outlet.
15. Unloading by a hydraulic gate.
16. Hydraulic tank 2022 with a capacity of 200 litres of oil.
17. Double pump (variable flowrate + vanes) and gearbox.



VMS

FEATURES	VMS
Mixed. Almond - Nuts	•
Tubular iron platform	mouth 0.60 m.
Fruit tank capacity	500-700 kg. depending on the fruit ⁽¹⁾
Standard bar diameter	6,5 m
Two peelers and two fruit sorters	•
Separate speed adjustment of peelers and sorters without speed variation	•
Stopping of peelers and sorters during the vibration	NO
Maintenance of peeler and sorter speed although we increase the engine's revs	YES
Sound alarm of level of fruit load	•
Umbrella opening and closing sound alarm	•
Cobra control	•
Automatic movement sequencer	optional
CLASSIC VIBRATION SYSTEM	1 vibration in each direction
Continuous circular vibration	•
Power increase counterweight supplement	optional
Adjustment arm clamping, vibration brake	•
Free swivelling support	optional
Oil radiator	•
Oil tank capacity (litres)	200 l
Hydraulic system	Double pump (variable flowrate + vanes)
Tractor power take-off engine revolutions	540 RPM normal
Three-point head three-point sapling arms	•
General arms	optional
Parallel head Z10X	optional
Bar supplement (0.50 m / 1 m)	optional
45° hinge narrow plantation spaces (diameter 5 m) ⁽²⁾	optional
Opening low bars (the first two)	optional
Olive sorter kit	optional
Removable peelers	•

Agromelca, s.l. reserves the right to make the modifications it considers necessary to the products in this catalogue without prior notice.

(•) Standard ⁽¹⁾ Rough guide (depends on the type and characteristics of the fruit). ⁽²⁾ With hinge the bar diameter will be 5 metres.

DAY BY DAY WE IMPROVE THE WORLD OF COLLECTING

Pol. Industrial "Las Lagunas", P-A 2 • 44610 Calaceite - Teruel (Spain)

Tel. +34 978 851 283 - Fax +34 978 851 243

info@agromelca.com

Agromelca

www.agromelca.com