

# FRONT COLLECTOR



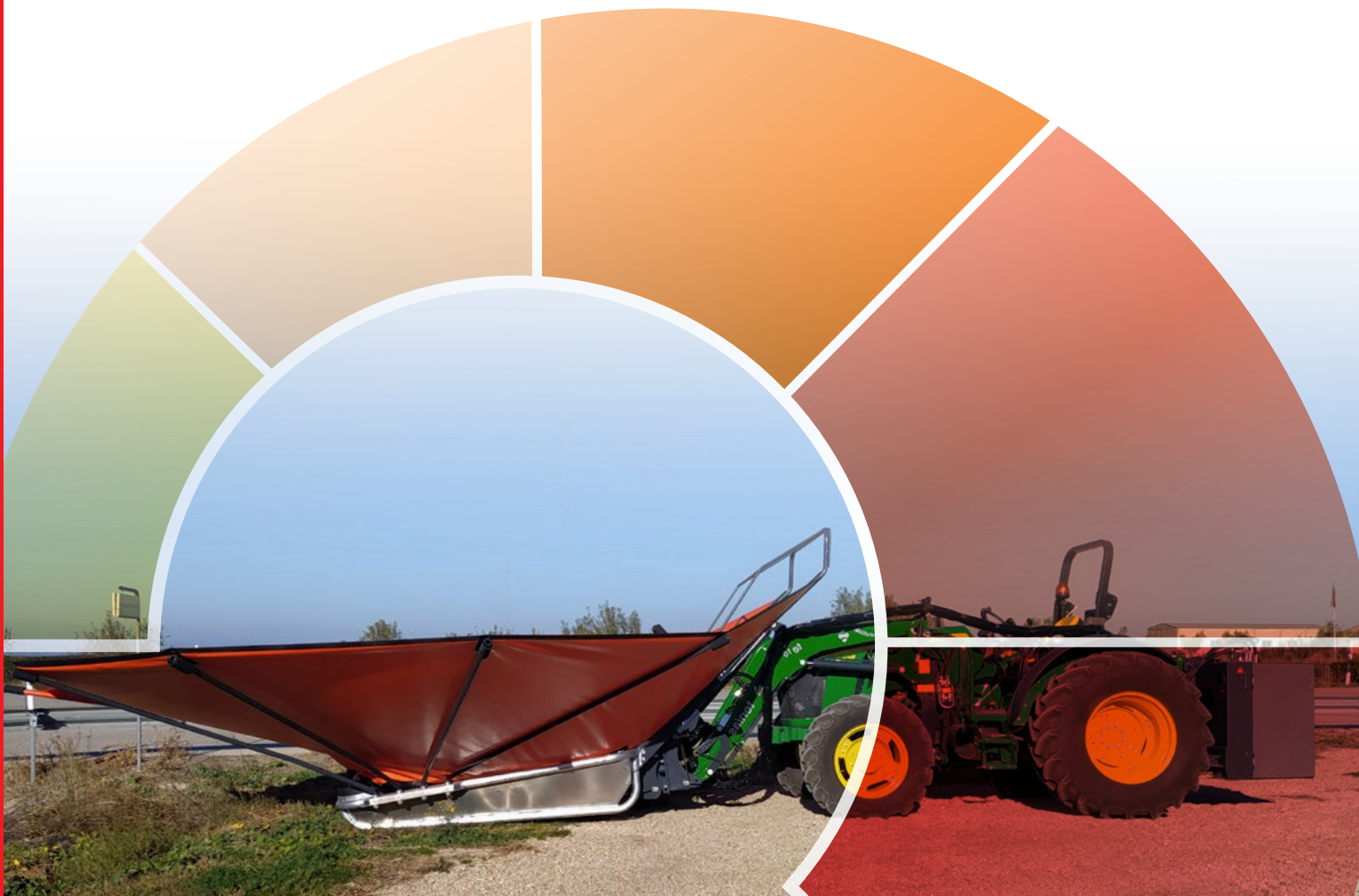
## TRV VERSION (Turbo Vibration)

### OLIVES

VM1-XT10 TRV PNA 80  
VM2-XT10 TRV PGA 100

### OLIVE/ALMOND (MIXED)

VM1-XT10 TRV DGA 80 PLUS  
VM2-XT10 TRV DGA 100



**DAY BY DAY WE IMPROVE THE WORLD OF COLLECTING  
DRIED FRUIT AND OLIVE COLLECTORS**

**Agromelca**  
www.agromelca.com





# VM TRV SERIES

THE HIGH PERFORMANCE  
COLLECTOR



The **VM-XT10 TRV** series offers you a high performance product with great versatility and big advantages for harvesting almonds and olives.

These machines are assembled on the arms of the loader and are conceived and designed to be able to harvest all kinds of trees (almond trees and olive trees).

# HEAD WITH **THREE POINT** CLOSING

- Very light weight.
- Attachment corrected at three points (does not damage branches, trunk or the fruit).
- Continuous circular vibration with the possibility of 30-40% power variation with a very easy operation (5 min.) depending on the type of tree to harvest (almond trees or olive trees).
- The clamping arms that allow us to attach them to trunks with diameters ranging from 8 to 30 cm.
- The outcome of the sum of the type of vibration incorporated and the attachment corrected at three points system, is that the yield percentages are excellent without any damage.

**Optionally,**

we can assemble the general arms, which will allow us to vibrate perfectly, trunks ranging from 15 to 45 cm. The vibration we will obtain and the yield percentages will also be excellent.



# HEAD WITH PARALLEL CLOSING **Z20 AND Z10** (OPTIONAL)

## MODELS:

**Z20:** Maximum opening of 60 cm. Larger size and designed for an excellent performance on all kinds of trees.

**Z10:** Maximum opening of 45 cm. Smaller and designed for medium-young trees.



NOTE: head recommended for trees with a trunk diameter over 20 cm.

- New two point attachment system.
- It can be assembled on all Agromelca vibration device models.
- Cylinders positioned on the back and therefore they are totally protected.
- Easy attachment to the trunk.
- Wide opening of the pincer.
- Adjustment of the opening of the pincer and therefore we can adapt it to all kinds of trees (with a big diameter, young, etc.).
- Continuous circular vibration with the possibility of 30- 40% power variation with a very easy operation (5 min.) depending on the type of tree to harvest (almond trees or olive trees).



# MOVEMENTS OF THE MODELS OF THE **VM-XT10 PNA/PGA/DGA** SERIES

This vibration device is principally designed to harvest 1 foot trees very quickly and easily. The VM1 model also allows us to lift and spread out the telescope to be able to attach in the highest positions. If necessary, in trees where harvesting is very difficult using the umbrella, it can be released very easily. Given its light weight, it can be assembled on fruit tractors.

## VM1-XT10 TRV PNA 80 / DGA 80 PLUS

- Pincer rotation (sloping trunks).
- 1 50 cm telescope (extendible).
- Separate lifting from the umbrella.





With the collecting platform on the ground and not moving the tractor from its original location, we can attach to trees measuring one to two feet, attach to trunks of up to 2 m in height and make attachments with side movements of up to 2 m. If necessary, for trees where harvesting is very difficult using the umbrella, it can be released very easily.

## VM2-XT10 TRV PGA 100 / DGA 100

- Pincer rotation (sloping trunks).
- 175 cm telescope (extendible).
- Separate lifting from the umbrella.
- Side machine rotation (sx – dx).

# TUBULAR ALUMINIUM PICKING PLATFORMS

Our **VM-XT10 TRV** series is equipped with the new tubular aluminium platform with the option of choosing several dimensions.

## MODELS:

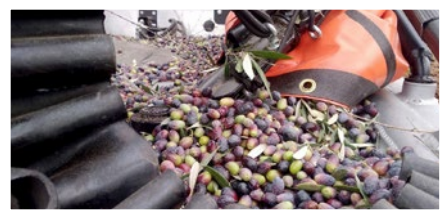
- **PNA 80.** Mouth measurement of 0.80 m and approximate bar diameter of 6 - 6.5 m
- **PGA 100.** Mouth measurement of 1.00 m and approximate bar diameter of 7 - 7.5 m

With this platform we will reduce the weight of a conventional umbrella (iron) and we therefore enormously reduce the wear and breakdowns of the vehicle that withstands the weight and increase the handling of the vehicle, stability, safety, agility of operations and speed in the movements.

**Agromelca, s.l. is a pioneer in the manufacture of aluminium platforms (patented).**

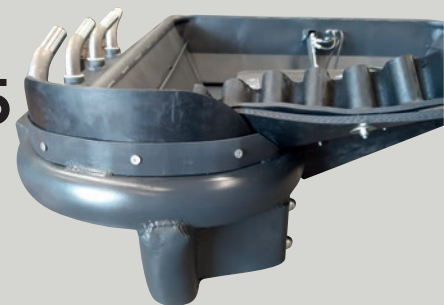
With this umbrella we have taken a great step forward in the mechanisation of harvesting and we have got rid of the big weight issue.

- Its tubular construction makes entering and leaving the tree operations easier.
- The diameter can be changed on request. (Ask).
- Quick release of the umbrella from the vibration device if the type of plantation requires this (e.g. Olive trees not adapted to harvesting with umbrellas).
- **OPTIONAL.** Bars with minimum angle (indicated for olive trees).  
If necessary, to make manually going over olive picking from the outer perimeter of the umbrella easier, the minimum bar angle can be requested.
- **OPTIONAL.** Bar supplement to increase the diameter.
- **OPTIONAL.** Low bars open (the first two).



## TUBULAR IRON PLATFORM PNH 80 PLUS, PGH 100 & PGH 125 MODELS (OPTIONALS)

Optionally, in the vibration equipment the platform model **PNH 80 PLUS, PGH 100 or PGH 125** can be installed, with tubular design and iron fabrication.





# TUBULAR ALUMINIUM PICKING PLATFORMS (MIXED)

## MODELS:

- **DGA 80 PLUS.** Mouth measurement of 0.80 m and approximate bar diameter of 6 - 6.5 m
- **DGA 100.** Mouth measurement of 1.00 m and approximate bar diameter of 7 - 7.5 m



- Approximate load capacity **DGA 80.** 150-200 kg (depending on the fruit).
- Approximate load capacity **DGA 100.** 200-250 kg (depending on the fruit).
- Its tubular construction makes entering and leaving the tree operations easier.
- The diameter can be changed on request (ask).
- It has two peelers incorporated, two fruit sorters and two tank filling sensors in the tank with sound alarm.
- With the incorporation of two peelers and two fruit sorters, the almonds enter and are cleaned very quickly, eliminating downtimes.
- Separate peeler and fruit sorter speed adjustment.
- Easy to disassemble peelers (although this is not necessary), fruit sorters and aluminium plates of the tank for subsequent use in the harvesting of other fruits (olives).
- The peeler shaft is easy to extract (to replace rubber seals) only removing three screws.
- Quick release of the DGA umbrella from the vibration device if the type of plantation requires this (e.g. Olive trees not adapted to harvesting with umbrellas).
- **OPTIONAL.** Bars with minimum angle (indicated for olive trees). If necessary, to make manually going over olive picking from the outer perimeter of the umbrella easier, the minimum bar angle can be requested.
- **OPTIONAL.** Bar supplement to increase the diameter.
- **OPTIONAL.** Low bars open (the first two).

## TUBULAR IRON PLATFORM DGH 80 PLUS & DGH 100 MODELS (OPTIONALS)

Optionally, in the vibration equipment the platform model **DGH 80 PLUS** or **DGH 100** can be installed, with tubular design and iron fabrication.



# INCORPORATED HINGE FOR NARROW PLANTATION SPACES (OPTIONAL)



## INSTALLATION IN VM1 MODEL

In order to be able to harvest with the umbrella plantations with a very small space, we can incorporate the hinge system.

This joint allows us to rotate the entire collector 45° in one direction, and therefore we can make entering and leaving the tree operations without major complications.

The minimum space for the hinge to be able to work successfully is 5x3.

If we have to harvest trees with the hinge working, the umbrella diameter is recommended not to exceed 5m.



# MOVEMENT AND VIBRATION CONTROLS



- The movements and vibration are carried out comfortably and easily using an electronic box, equipped with joysticks and selectors.
- **Opcionalmente,** an electronic cobra control can be installed.



## CONTROL UNIT FUNCTIONS (OPTIONAL)



**OPEN OUT CANVAS + CLOSE PINCER ARMS**



**OPEN PINCER ARMS + CLOSE CANVAS**

**1**

Pressing the button activate the simultaneous. Pushing the joystick (without pressing any button) the umbrella will extend and the clamp will close automatically. Move the joystick in the opposite direction to open the clamp and withdraw the umbrella. To deactivate this function press the button again.



**AUTOMATIC SEQUENTIAL MOVEMENTS (Optional)**

**AUTOMATIC**

**How does it work?**

When we have the collector positioned correctly in the tree, we will activate it by pressing the button.

**2**

Automatically, the collector will perform the following actions:

1. Extend platform canvas.
2. Close clamp arms.
3. Left vibration (if the operator has activated it).
4. Right vibration (if the operator has activated it).
5. Opening arms clamp.
6. Collect platform canvases.

# CONFIGURATION OF THE HYDRAULIC SYSTEM

We have always been committed to the reliability of our products, and therefore all the hydraulic components we install in our collectors are from renowned and top quality brands. To introduce the **TRV** system, we have designed a totally new electric and hydraulic system, equipped with state-of-the-art and top quality hydraulic components.



## The hydraulic configuration of the VM-XT10 TRV PNA/PGA series is:

1. We incorporate double vibration in each direction (1 fixed + 1 turbo in each direction).
2. Adjustable vibration brake and self-tightening selectable.
3. Adjustment of the clamping force of arms to the trunk we prevent peeling).
4. Hydraulic system made up of one double pump with multiplier (TDF 540 RPM).

## The general hydraulic features of the VM-XT10 TRV DGA are:

1. Triple pump w/multiplier (Power take-off 540 RPM).
2. Vibration with turbo system (1 vibration in each direction + 1 turbo vibration in each direction).
3. Adjustable vibration brake and self-tightening selectable.
4. Adjustment of the clamping force of arms to the trunk.
5. The peelers and fruit sorters do not stop when we vibrate.
6. Separate speed adjustment of peelers and fruit sorters.
7. The peeler and fruit sorter speed we have chosen does not vary even if we accelerate the vehicle.
8. Other features (ask the distributor).



# TRV PNA/PGA

FEATURES	VM1-XT10 TRV PNA 80	VM2-XT10 TRV PGA 100
Quick attach and release of the umbrella	•	•
Aluminium tubular platform	PNA 80	PGA 100
Fruit tank capacity	300-400 kg depending on the fruit <sup>(1)</sup>	350-4500 kg depending on the fruit <sup>(1)</sup>
Standard bar diameter	6,5 m	7,5 m
Umbrella opening and closing sound alarm	•	•
Joysticks + selectors box	•	•
Cobra control	optional	optional
Automatic movements sequencer	optional	optional
VIBRATION SYSTEM WITH TURBO (TRV)	1 vibration in each direction + 1 turbo vibration	1 vibration in each direction + 1 turbo vibration
Continuous circular vibration	in each direction	in each direction
Power reduction counterweight supplement	•	•
Power increase counterweight supplement	optional	optional
Adjustment arm tightening, vibration brake + self-tightening	optional	optional
Rotation in the pincer	•	•
Telescope (extendible)	•	•
Separate lifting from the umbrella	50 cm	75 cm
Machine side rotation	•	•
Oil tank capacity (litres)	-	•
Hydraulic system	200 l	200 l
Tractor power take-off engine revolutions	2 pump w/multiplier	2 pump w/multiplier
Three point head	540 RPM normal	540 RPM normal
Special arms young trees (3 point head)	•	•
Parallel head Z10	optional	optional
Parallel head Z20	optional	optional
Installation platform PNA 80	optional	optional
Installation iron platform PNH 80 PLUS	•	-
Installation iron platform PGH 100	optional	-
Installation platform PGA 100	optional	optional
Installation iron platform PGH 125	optional	•
Bar supplement (0.50 m / 1 m)	-	optional
Minimum bar angle	optional	optional
45° hinge narrow plantation spaces (diameter 5 m) <sup>(2)</sup>	optional (free)	optional (free)
Low bars open (the first two)	optional	-
Anti-caloric super soft rubber components (Z10 and Z20)	optional	optional

Agromelca, s.l. reserves the right to make the modifications it considers necessary to the products in this catalogue without prior notice.

(•) Standard <sup>(1)</sup> Rough guide (depends on the type and characteristics of the fruit). <sup>(2)</sup> With hinge the bar diameter will be 5 meters.

# TRV DGA

FEATURES	VM1-XT10 TRV DGA 80 PLUS	VM2-XT10 TRV DGA 100
Mixed. Almond - Olive	•	•
Quick attach and release of the umbrella	•	•
Aluminium tubular platform	DGA 80 PLUS	DGA 100
Fruit tank capacity	150-200 kg depending on the fruit <sup>(1)</sup>	200-250 kg depending on the fruit <sup>(1)</sup>
Standard bar diameter	6,5 m	7,5 m
Two peelers and two fruit sorters	•	•
Separate speed adjustment of peelers and fruit sorters without speed variation	•	•
Stopping of peelers and fruit sorters during the vibration	NO	NO
Maintenance of peeler and fruit sorter speed although we increase the engine's revs	YES	YES
Sound alarm of level of fruit load	•	•
Umbrella opening and closing sound alarm	•	•
Joysticks + selectors box	•	•
Cobra control	optional	optional
Automatic movements sequencer	optional	optional
VIBRATION SYSTEM TURBO (TRV)	1 vibration in each direction + Turbo vibration in each direction	1 vibration in each direction + Turbo vibration in each direction
Continuous circular vibration	•	•
Power reduction counterweight supplement	•	•
Power increase counterweight supplement	optional	optional
Adjustment arm tightening, vibration brake + self-tightening	•	•
Rotation in the pincer	•	•
Telescope (extendible)	50 cm	75 cm
Separate lifting from the umbrella	•	•
Machine side rotation	-	•
Oil radiator	•	•
Oil tank capacity (litres)	200 l	200 l
Hydraulic system	Triple pump w/multiplier	Triple pump w/multiplier
Tractor power take-off engine revolutions	540 RPM normal	540 RPM normal
Three point head	•	•
Special arms young trees (3 point head)	optional	optional
Parallel head Z10	optional	optional
Parallel head Z20	optional	optional
Bar supplement (0.50m / 1m)	optional	optional
Minimum bar angle	optional (free)	optional (free)
Installation platform DGA 100	optional	•
45° hinge narrow plantation spaces (diameter 5 m) <sup>(2)</sup>	optional	-
Low bars open (the first two)	optional	optional
Anti-caloric super soft rubber components (Z10 and Z20)	optional	optional

Agromelca, s.l. reserves the right to make the modifications it considers necessary to the products in this catalogue without prior notice.

(•) Standard <sup>(1)</sup> Rough guide (depends on the type and characteristics of the fruit). <sup>(2)</sup> With hinge the bar diameter will be 5 meters.

# PLATFORM MADE OF ALUMINIUM

**DAY BY DAY WE IMPROVE THE WORLD OF COLLECTING**

Pol. Industrial "Las Lagunas", P-A 2 • 44610 Calaceite - Teruel (Spain)

Tel. +34 978 851 283 - Fax +34 978 851 243

[info@agromelca.com](mailto:info@agromelca.com)

*Agromelca*  
[www.agromelca.com](http://www.agromelca.com)